

# ON DISH

IN TO YOU

## BIG STARS RETURN



**BRYAN CRANSTON**  
Is Back In “Your Honor”



**CYBILL SHEPHERD**  
Talks “How To Murder Your Husband”



**ANDIE MacDOWELL**  
In New Hallmark Series  
“The Way Home”

Alexandra  
Daddario In  
“Anne Rice’s  
Mayfair  
Witches”

# WINTER PREVIEW 2023



# NBA League Pass



**FREE  
Preview**  
**JAN. 10-16**  
Channels 5000-5031  
Channel 470

Watch the most NBA Basketball with the NBA LEAGUE PASS or NBA TEAM PASS packages on DISH. NBA LEAGUE PASS and NBA TEAM PASS are regular season packages that provide subscribers with games from outside their local viewing area. Are you in one city while your favorite team or player is in another? Or are you a Super Fan who wants to watch the best game of the night? Then don't miss a minute of live NBA action – get NBA LEAGUE PASS or NBA TEAM PASS today!

**HALF SEASON OFFER STARTING 1/10/2023!**

**Order NBA LEAGUE PASS for only \$49.99 starting 1/10/2023**

**Order NBA TEAM PASS for only \$44.99 starting 1/10/2023**

**To order call 1-800-333-DISH (3474) or visit [mydish.com/NBA](https://mydish.com/NBA)**

NBA Regular Season, out-of-market games only. NBA LEAGUE PASS automatically continues at a special renewal rate each year unless you call to cancel prior to the start of the season, provided DISH carries this service. All prices, fees, charges, packages and programming subject to change without notice. The package is nonrefundable, nonproratable and nontransferable once the season begins. Restrictions apply to compatible DISH antennas and receivers. May not be available in Alaska, Hawaii, Puerto Rico, or USVI. Games subject to local blackout. Games in high definition require HD receiver; fee may apply to upgrade. Subscriptions subject to applicable sales tax. Commercial locations require an appropriate license agreement. Blackouts and other restrictions apply. © 2023 DISH Network L.L.C. All rights reserved. NBA, the NBA logo and team identifications are the exclusive intellectual property of NBA Properties, Inc. and the respective member teams. © 2023 NBA Properties, Inc. All Rights Reserved. © 2021 NBAE. Credit: Nathaniel S. Butler/NBAE via Getty Images.

## ON THE COVER

- 12 Winter Preview 2023
- 18 Andie MacDowell
- 19 Night Court
- 22 Cybill Shepherd
- 24 Bryan Cranston

## IN EVERY ISSUE

- 4 DISH Chatter
- 10 DISH Free Preview
- 32 DISH On Demand
- 220 Channel Directories
- 226 Puzzle Page

## FIND WHAT YOU WANT TO WATCH

- 28 New To Netflix
- 30 DISH On Demand Calendar
- 36 Premium Profiler
- 38 Movie Listings
- 84 Specials
- 88 Sports
- 94 Series
- 96 Daily Programming Listings



# 14

Karin Slaughter's book series *Will Trent* comes to ABC with Ramón Rodríguez in the titular lead



Editor in Chief: **Barb Oates**  
 Director of Editorial: **Jeff Pfeiffer**

### ART & PRODUCTION

Executive Art Director: **Tom Czisny**  
 Graphic Artist: **Rachael Engleman**

### COPY

Copy Chief: **Jill Klitz**  
 Copy Editor: **Katie Kuenkler**

### VP OF ENTERTAINMENT ADVERTISING

**Tom Comi** [tcomi@ntvbmedia.com](mailto:tcomi@ntvbmedia.com)

### BUSINESS

Publisher: **Andrew DeAngelis**

## CONTACT US

To contact the publishers of OnDISH Magazine:

**email:** [dishletters@ntvbmedia.com](mailto:dishletters@ntvbmedia.com)

**write:** OnDISH Magazine,  
 9275 N. 49th St., Suite 100,  
 Brown Deer, WI 53223

**call:** 1-888-333-5388\*

**web:** [ondishmag.com](http://ondishmag.com)

**twitter:** @OnDISHMag

\*Please Note: We are not DISH.

### TO CONTACT DISH:

To report a change in address, cancel your magazine or to change any DISH services you need to contact DISH at [mydish.com](http://mydish.com) or call 1-800-333-DISH (3474).

On The Cover: Alexandra Daddario: © 2022 AMC Network Entertainment LLC. Credit: Matthias Clamer/AMC. Bryan Cranston: © 2020 Showtime Networks Inc. Credit: Frank Ockenfels/Showtime. Andie MacDowell: © 2022 Hallmark Media. Credit: Larsen&Talbert. Cybill Shepherd: © 2022 Getty Images/David Livingston. Will Trent: © 2022 American Broadcasting Companies, Inc. Credit: ABC/Art Streiber.

OnDISH Magazine (USPS 015-347) (ISSN 23344423), Volume 27, Issue 11, is published monthly by NTVB Custom Media, LLC, 9275 N. 49th St., Suite 100, Brown Deer, WI 53223-1495. Subscription rate, 1 year \$60.00. The goal of NTVB Custom Media, LLC is to deliver your publication by the 1st of each month. If you are experiencing delivery delays, or your publication arrives damaged, please contact the U.S. Postal Service at your area post office. You can also log on to [ondishmag.com/delivery/](http://ondishmag.com/delivery/). Periodicals Postage Rates Paid at Milwaukee, WI and additional mailing offices.

POSTMASTER: Send address changes to OnDISH Magazine, 9275 N. 49th St., Suite 100, Brown Deer, WI 53223-1495. For questions or comments about this magazine, contact us at [dishletters@ntvbmedia.com](mailto:dishletters@ntvbmedia.com) or NTVB Custom Media, LLC, Attention: Editor, 9275 N. 49th St., Suite 100, Brown Deer, WI 53223-1495. NTVB Custom Media, LLC is not responsible for changes in programming times and dates. OnDISH MAGAZINE is a publication of NTVB Custom Media, LLC. All Rights Reserved. Reproduction in any form without written permission from the publisher is prohibited. © 2023 NTVB Custom Media, LLC. If you are moving to a new address, please visit your local Post Office and complete USPS Form 3575, or access the web at [moversguide.usps.com](http://moversguide.usps.com)

Subscribers: If the Post Office alerts us that your magazine is undeliverable, we have no further obligation unless we receive a corrected address within one year.

## OnDISH MAGAZINE'S READER REWARDS

One reader will win a warm and cuddly UPTV blanket.



Rules are simple: No purchase necessary to enter or win. Complete and mail form by Jan. 25, 2023. One form per envelope. See official rules at [ondishmag.com/rules](http://ondishmag.com/rules)

Name: \_\_\_\_\_  
 Address: \_\_\_\_\_ City: \_\_\_\_\_  
 State: \_\_\_\_\_ Zip: \_\_\_\_\_ Phone: \_\_\_\_\_

Mail this entry to: OnDISH Magazine January Reader Rewards, 9275 N. 49th Street, Suite 100, Brown Deer, WI 53223

## WHAT WE'RE WATCHING



### BARB

**First on my list to watch:**

*The Last of Us* on HBO

**Glad she's back:** Andie MacDowell in Hallmark Channel's new series *The Way Home*

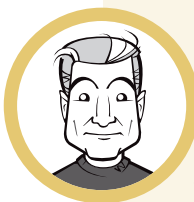


### JEFF

**First on my list to watch:**

*Fight the Power: How Hip Hop Changed the World* on PBS

**Classic movie must-sees this month:** TCM's spotlight on films with great car chases (Wednesday nights)



### RYAN

**First on my list to watch:**

*Frozen Planet II* on BBC America

**Favorite polar animal:** The emperor penguin



### RACHAEL

**First on my list to watch:**

*The Pale Blue Eye* on Netflix

**Favorite Reba song:** "Fancy"



### ZHANNA

**First on my list to watch:**

The supernatural thriller *The Watchful Eye* on Freeform

**New series I'm most excited for:** *The Last of Us* (HBO)



### PAUL H.

**First DISH On Demand movie to watch:** *Till*

**Catch up with this movie to start the year:** *Star Wars* on TNT

## DISH CHATTER

### ■ Why Does It Have To End?

**What's the reason behind NBC ending *New Amsterdam* in January? — Carol**

The series comes back from hiatus on Tuesday, Jan. 3 and bids farewell for good on Jan. 17. Last March, NBC announced that the series would wrap with a 13-episode Season 5, the shortest season ever, even though in 2020 the net had given the medical drama a three-season renewal. Reports indicate that the series was costly to produce and didn't deliver ratings anywhere close to NBC's other powerhouses like *Chicago Med*. It's been an emotional and fun ride following Dr. Max Goodwin (Ryan Eggold) and the staff at America's oldest public hospital.

### ■ "Virgin River" Return?

**Is there going to be a fifth season of *Virgin River*? — Igor**

Yes! The Netflix series continues to be extremely popular. Although we don't

have an exact date yet for the release, we do know that they wrapped up filming the fifth season in November and it is currently in post-production. Expect to see new episodes later this year. You can keep track of renewed and canceled series each month on page 7.

### ■ World Cup Winner

**Just wanted to send out kudos for your World Cup bracket and programming coverage in your magazine. Those pages are faithfully sitting on my coffee table, and I reference them daily. Looking forward to seeing the same format in another four years. Go USA! Thanks! — Matt**

Appreciate the feedback, Matt! FIFA World Cup 2026 is heading to North America with host cities being Atlanta, Boston, Dallas, Houston, Kansas City, Los Angeles, Miami, New York/New Jersey, Philadelphia, San Francisco Bay Area and Seattle, as well as Guadalajara, Mexico City, Monterrey, Toronto and Vancouver. While waiting,

## HAPPY ANNIVERSARY!

70 YEARS AGO

50 YEARS AGO

**Notable TV series, episodes, networks and/or events celebrating anniversaries this month.**

By Jeff Pfeiffer



### I LOVE LUCY: "LUCY GOES TO THE HOSPITAL"

On Jan. 19, 1953, nearly 74% of U.S. televisions were tuned to CBS as Lucy Ricardo (Lucille Ball) brought "Little Ricky" into the world. Hours before this episode, which was filmed in November, Ball actually gave birth to Desi Arnaz Jr.



### SCHOOLHOUSE ROCK!

Folks of a certain age might have learned about conjunctions, basic math and science, how a bill becomes a law and other subjects via this interstitial series of animated musical educational shorts that originally aired Saturday mornings on ABC Jan. 6, 1973-Jan. 1, 1984.

New Amsterdam's  
final episodes air  
Jan. 17



check out Netflix's controversial four-episode docuseries *FIFA Uncovered*, which fascinatingly details how World Cup host countries are selected.

■ **“Paper Girls” Got The Cut**  
What is up with Prime Video's *Paper Girls* in terms of future seasons? Anything you can find out would be appreciated. — Justin

Despite some great reviews, Amazon has pulled the plug on this dark sci-fi

drama about four paper girls from the 1980s who find themselves face-to-face with their adult selves after accidentally time-traveling to the future. However, word is that the showrunners are trying to find it a new home on a different platform. Fingers crossed!

■ **Congratulations!**  
Our November Reader Rewards winner of a *Game of Thrones* coloring book and art pencils was Deirdre Calvey.

■ **Network Alert!**

EPIX is changing its name to MGM+ effective Jan. 15. MGM+'s president said that the premium and stand-alone streaming service rebranding “is a promise to existing and new viewers that MGM+ is the place to find television that reflects and celebrates the legacy of the iconic MGM brand — cinematic programming with sophisticated storytelling that entertains, delights, surprises and transports. MGM is television for movie lovers.”

■ **Delivery/Replacement Policy**

We mail each issue of your magazine in enough time for it to arrive by the first of the month according to what is required by the United States Postal Service standards for delivery. If your magazine does not arrive in the first week of the month, you must contact us within 15 days (i.e., by Jan. 15) to request a replacement copy. Email us at [dishletters@ntvbmedia.com](mailto:dishletters@ntvbmedia.com) (include your name and address), call 1-888-333-5388, or write us at OnDISH Magazine, 9275 N. 49th St., Suite 100, Brown Deer, WI 53223.

**45 YEARS AGO**



**FANTASY ISLAND**  
The first version of this series, starring Ricardo Montalban and Hervé Villechaize, aired on ABC Jan. 28, 1978-May 19, 1984. The current *Fantasy Island*, led by Roselyn Sánchez, begins its second season Jan. 2 on FOX.

**35 YEARS AGO**



**THE WONDER YEARS**  
This nostalgic coming-of-age comedy/drama led by Fred Savage debuted following ABC's broadcast of Super Bowl XXII on Jan. 31, 1988, and ran six seasons, ending May 12, 1993.

**30 YEARS AGO**



**DR. QUINN, MEDICINE WOMAN**  
Jane Seymour headlined CBS' Western drama from Jan. 1, 1993-May 16, 1998. She's hoping to revive the series and shopping networks.

**20 YEARS AGO**



**THE BACHELORETTE**  
This continuing spinoff of ABC's *The Bachelor* debuted Jan. 8, 2003. That first season saw Ryan Sutter win the heart of Trista Rehn; the couple married later that year in a TV special and are still together, with two children.

**15 YEARS AGO**



**BREAKING BAD**  
AMC's acclaimed crime drama starring Emmy winners Bryan Cranston and Aaron Paul ran Jan. 20, 2008-Sept. 29, 2013. See our interview with Cranston on page 24.



HYPE

Elvis



Abbott Elementary



Only Murders in the Building



The Fabelmans



Everything Everywhere All at Once



The Banshees of Inisherin

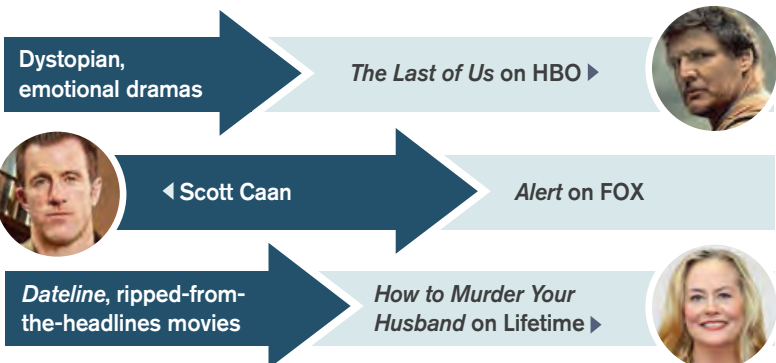
# 80<sup>th</sup> Golden Globe Awards



After the 2022 Golden Globe Awards telecast was canceled — literally and figuratively — the Hollywood Foreign Press Association's (HFPA) celebration of the best in TV and movies returns to NBC for its landmark 80th edition on Tuesday, Jan. 10. The network and various studios are satisfied that the HFPA has cleaned up its act and made sufficient progress in addressing its diversity issues, so the show will go on again at the Beverly Hilton in Beverly Hills, California. The live ceremony takes place on a Tuesday night to avoid conflicting with NFL games and the college football championship. Top nominees include *Abbott Elementary*, *The White Lotus* and *Only Murders in the Building* in TV, and *The Banshees of Inisherin*, *The Fabelmans*, *Everything Everywhere All at Once*, *Babylon* and *Elvis* in film. Jerrod Carmichael hosts.

## If You LIKE... TRY

Remember when word of mouth and water-cooler talk were how you discovered new TV shows, good restaurants and your next great read? Now we've got recommendation engines matching us up to what to watch next. Here we keep it simple.



Elvis: © 2022 Warner Bros. Entertainment Inc. All rights reserved. *Abbott Elementary*: © 2021 American Broadcasting Companies, Inc. All rights reserved. *Only Murders in the Building*: © 2021 Hulu. Credit: Craig Blankenhorn. *Everything Everywhere All at Once*: Credit: David Bornfriend. *The Last of Us*: HBO. *Alert*: © 2022 Fox Media LLC. Credit: Steve Wilkie/FOX. *The Last of Us*: HBO. *Alert*: © 2022 Fox Media LLC. Credit: Steve Wilkie/FOX. *The Banshees of Inisherin*: Credit: Searchlight Pictures. *The Fabelmans*: Credit: Universal Pictures. *The Golden Globe Awards*: © 2012 NBCUniversal Media, LCC. Credit: Chris Haston. *The Fabelmans*: Credit: Universal Pictures.

## RETURNING FAVORITES

- All Creatures Great and Small** PBS (Jan. 8)
- American Auto** NBC (Jan. 24)
- Antiques Roadshow** PBS (Jan. 2)
- The Bachelor** ABC (Jan. 23)
- BattleBots** Discovery Channel (Jan. 5)
- Celebrity Name That Tune** FOX (Jan. 11)
- The Cube** TBS (Jan. 8)
- Darcey & Stacey** TLC (Jan. 23)
- Extreme Sisters** TLC (Jan. 23)
- Fantasy Island** FOX (Jan. 2)
- Finding Your Roots With Henry Louis Gates Jr.** PBS (Jan. 3)
- Godfather of Harlem** EPIX/MGM+ (Jan. 15)
- Hunters** Prime Video (Jan. 13)
- I Am Jazz** TLC (Jan. 24)
- Married at First Sight** Lifetime (Jan. 4)
- Master Minds** Game Show Network (Jan. 9)
- Miracle Workers** TBS (Jan. 16)
- Miss Scarlet and the Duke** PBS (Jan. 8)
- 9-1-1: Lone Star** FOX (Jan. 17)
- 1000-lb Best Friends** TLC (Jan. 4)
- 1000-lb Sisters** TLC (Jan. 17)
- Tough as Nails** CBS (Jan. 4)
- Ugliest House in America** HGTV (Jan. 1)
- Vienna Blood** PBS (Jan. 8)
- Vikings: Valhalla** Netflix (Jan. 12)
- Your Honor** Showtime (Jan. 15)



## RECENTLY RENEWED

Mike White's Emmy-winning comedy/drama anthology **The White Lotus** is returning for a third season on HBO, following a new group of guests at another White Lotus property. "I feel so lucky to get this opportunity again and am excited to reunite with my amazingly talented collaborators," White said upon the renewal. ... INSP has renewed its fan-favorite competition series **Ultimate Cowboy Showdown** for Season 4, which begins production in Arizona this month with Trace Adkins returning as host and executive producer. The new season will be an all-stars edition that brings back top contestants from the previous three installments. ... Syndicated daytime talker **The Kelly Clarkson Show** has been renewed for two more seasons, taking it through 2025. ... Animated series **Monster High** is returning to Nickelodeon with a 20-episode second season. ... Some notable streaming series have been renewed: two more installments of Ryan Murphy and Ian Brennan's true-crime anthology series **Monster**, as well as a second season of their real-estate thriller **The Watcher**, on Netflix.

## YANKED!: Recently Canceled Shows

HBO pulled the plug on sci-fi thriller **Westworld**. The series finale aired in August. ... The sun set on Showtime's **City on a Hill** after three seasons. ... **Chrisley Knows Best** and **Growing Up Chrisley** are sentenced to cancellation on USA Network and E! after Todd and Julie Chrisley's convictions for fraud and other crimes. ... At The CW, **Nancy Drew** will sign off after its upcoming fourth season and **Whose Line Is It Anyway?** will wrap up after 20 seasons that aired over three different networks. ... Freeform disposed of **Everything's Trash** after

10 episodes. ... Bravo has soured on **Kandi & the Gang** after one season. ... There's bad news for CNBC's **The News With Shepard Smith**, MSNBC's **The Cross Connection** and CNN's **This Is Life With Lisa Ling**. ... **Tuca & Bertie** had their final flight on Adult Swim. ... Netflix axed **The Imperfects**, **Selling Tampa** and **Fate: The Winx Saga**. ... Prime Video announced final season premiere dates for **Hunters** (Jan. 13) and **Carnival Row** (Feb. 17).





# 5 QUESTIONS WITH KAREN GRASSLE OF "LITTLE HOUSE ON THE PRAIRIE"

By Barb Oates



This year marks the 49th anniversary of *Little House on the Prairie* (1974-83) and the 10th anniversary of the over-the-air network COZI TV, which continues to air the beloved series. For eight years, Karen Grassle portrayed the warmth, patience and strength of frontierswoman Caroline "Ma" Ingalls. "It's just astonishing for me to realize the power that the

show still has for people," Grassle shares. "We never could have guessed that 50 years from now, you would be wanting to talk to me about *Little House* on COZI TV. It's all completely undreamed of." Now, at age 80, Grassle reflects back on the series and shares some insights on her candid memoir *Bright Lights, Prairie Dust*.

**1 What episode(s) remain special to you to this day and why?** I love the pilot. I love the simplicity of the story. I love how true it is to the books, and I love it because we were all venturing into a new territory as actors, as cast, as crew, Mike [Michael Landon] as producer/director, and there weren't a lot of other people involved. We were on location. We were kind of out there, you know, and it gave us a chance to really bond and become this little family. I loved that, and I loved being with the girls around the campfire and building those relationships.

**2 When it came to being a TV mom to the girls, was one more mischievous than the other?** They were very well cast. Mike had a genius for casting, and Melissa Sue Anderson, when I first met her at a costume fitting, she and her mom were just finishing and they came out, and I was stunned by this beautiful child. She looked like this little princess, and she was very polite, with good manners, very soft-spoken, and so right for Mary. Then on the first day of shooting, this little redhead with pigtails came up to me and I thought, "Here comes Laura." She said, "Have you got your tears ready?" I was like, "Um, this is going to be different." I had to answer her back really quickly, you know, as if she hadn't thrown me, and I said, "Yes, I have them in my pocket." That was our first exchange. I must say that I really treasured getting to know them.

**3 Was there any part of your own mother that you brought to the role?** I based the entire character on my mother. There was very little about the real Caroline Ingalls at that time. ... I knew she had been a one-room schoolhouse teacher. I knew she was committed to giving her girls a good education. I knew she was tough, that she'd been poor, that she'd struggled, and my mother had done all of these things.

**4 How long did it take you to write your deeply personal memoir *Bright Lights, Prairie Dust*?** Oh, mercy. Well, I say 10 years, because I didn't work every day at the beginning. Then there were times when I went off and did a play or went off and did a movie, or took a long trip. There'd be times when I took a break, but I would say that the process, the whole thing, was 10 years.

**5 What keeps you happy today?** I like gardening. That makes me feel good. I like walking. I like being with my friends, and I like writing. All of these things.



# FREE Preview

Enjoy a Free Preview from the following networks

Dec. 25 - 31



Channels 310 - 315  
HBO



Channels 307 - 309  
Cinemax

Jan. 1 - 31



Channel 188  
Heartland Pack, AT200

Jan. 1 - 7



Channels 5330 - 5395; Channel 475  
NHL Center Ice

Jan. 10 - 16



Channels 5000 - 5031; Channel 470  
NBA League Pass

## UPGRADE TODAY:

If you want to get these great channels and more, it's easy to upgrade! Log in to your account on [mydish.com](http://mydish.com) and click on My Programming to upgrade your package.



Download the MyDISH app from Google Play or Apple App Store, log in with your MyDISH account credentials, then select "Manage TV" from the homescreen

Some channels available in HD. HD channels require HD television and HD receiver to view in high definition. Fee may apply to upgrade.

**dish**  
Tuned In To You.

## TUNED IN TO YOU



Anne Rice's Mayfair Witches



Better Call Saul



The Walking Dead

## RING IN THE NEW YEAR WITH AMC+

DISH Gives You Access To All Your AMC Favorites. By Zhanna Slor

With plenty of original series, genre-defying films and award-winning dramas, the streaming service AMC+ has expanded its reach, and DISH subscribers can save some money and enjoy everything the streamer has to offer for the reasonable cost of \$7.99/month. For TV lovers who want to catch up on the epic final season of the long-running hit zombie apocalypse show *The Walking Dead*, or check out the new supernatural family saga from the bestselling author of *Interview With a Vampire*, *Anne Rice's Mayfair Witches* (premiering Sunday, Jan. 8), which follows an intuitive young neurosurgeon (Alexandra Daddario) and her coven of powerful New Orleans witches, AMC+ has something for all.

Get access to even more on demand! In addition to the promising new *Mayfair Witches* series, AMC+ includes many more incredible shows, like the Emmy Award-nominated six-season *Breaking Bad* prequel about a morally compromised lawyer (Bob Odenkirk), *Better Call Saul*, the critically acclaimed British cat-and-mouse thriller about a charming but psychopathic assassin (Jodie Comer) and an obsessed investigator (Sandra Oh), *Killing Eve*, the bold adaptation of John le Carre's international spy novel, *The Little Drummer Girl*, the new Graham Roland (*Tom Clancy's Jack Ryan*) creation following a Navajo Tribal Police investigation in 1970s New Mexico, *Dark Winds*, and several options for those who like a little magic in their drama: *Anne Rice's Interview With the Vampire*, a modern adaptation of the iconic novel about a centuries-old vampire and his immortal family; *A Discovery of Witches*, which is based on the bestselling trilogy by Deborah Harkness and follows the epic star-crossed love story between a young witch and a wealthy vampire (plus a whole lot more!). AMC+ features the best of AMC, IFC Films Unlimited, SundanceTV and Shudder all at your fingertips, ad-free.

In order to subscribe and access the content, customers need an internet-connected Hopper or Wally receiver. Once subscribed, customers can access AMC+ in the following ways:

- Go to Channel 296 in the guide to access the AMC+ on demand folder. AMC+ will only show in the guide if you are subscribed.
- Go to the On Demand menu > Browse by Channel > On Demand Subscriptions
- Say "AMC Plus" into your voice remote
- Watch on the Dish Anywhere app or [dishanywhere.com](http://dishanywhere.com)



Watch the most NHL Hockey with the NHL CENTER ICE package on DISH. NHL CENTER ICE is a regular season package that provides subscribers with games from outside their local viewing area. Follow your favorite teams and players all season long, even if you don't live in the same city as them.



**FREE Preview**  
JAN. 1-7

Channels 5330-5395  
Channel 475

**HALF SEASON OFFER STARTING 1/1/2023!**

**Order NHL Center Ice for only \$45.99 starting 1/1/2023**

**To order call 1-877-DISH PPV (347-4778) or visit [mydish.com/NHL](http://mydish.com/NHL)**

NHL Center Ice automatically continues at a special renewal rate each year unless you call to cancel prior to the start of the season, provided DISH carries this service. All prices, fees, charges, packages and programming subject to change without notice. The package is nonrefundable, nonproratable and nontransferable once the season begins. Restrictions apply to compatible DISH antennas and receivers. May not be available in Alaska, Hawaii, Puerto Rico, or USVI. Games subject to local blackout. Games in high definition require HD receiver; fee may apply to upgrade. Subscriptions subject to applicable sales tax. Commercial locations require an appropriate license agreement. Blackouts and other restrictions apply. © 2023 DISH Network L.L.C. All rights reserved. NHL, the NHL Shield and Center Ice name and logo are registered trademarks and The Game Lives Where You Do and NHL Network are trademarks of the National Hockey League. NHL and NHL team marks are the property of the NHL and its teams. © NHL 2023. All Rights Reserved.

## Multi-Sport Pack

*We've Got Sports Covered*



With so many of your favorite sports networks, DISH's Multi-Sport Pack offers sports fans the very best sports coverage at an unbeatable value. Get access to NFL RedZone, NFL Network, NBA TV, NHL Network, MLB Network, MLB StrikeZone, and many more!

Featured Channels:



**Order the Multi-Sport Pack for only \$13/month**

**To order call 1-800-333-DISH (3474) or visit [mydish.com/multisport](http://mydish.com/multisport)**

Restrictions may apply to availability. Games subject to local blackout. Games in high definition require HD television and HD receiver; fee may apply to upgrade. Subject to change without notice.

# WINTER PREVIEW

Dania Ramirez  
and Scott Caan

## ALERT

**FOX** Premieres Sunday, Jan. 8;  
airs Mondays beginning Jan. 9  
**NEW SERIES!**

Speaking with Scott Caan about his new FOX missing-persons drama *Alert*, the conversation briefly turned to his father, legendary actor James Caan, who passed away last year. He offered that his dad “was the kind of dude that if he did something, he wanted to be the best at it. So whether it be acting or jiu-jitsu or surfing or football or baseball, whatever it was, he was just someone who was good at everything. And that’s sort of what he taught me: If you’re going to play, play to be the

best, or don’t play.”

That’s an ethos Caan has certainly put to use over his multitalented career that spans various art forms — in addition to being an actor and writer, he is also an accomplished photographer and was a rapper in the 1990s — as well as in other areas, including becoming a black belt in Brazilian jiu-jitsu.

Having acted in, and written, feature films (including the upcoming crime thriller *One Day as a Lion*, which costars Frank Grillo, J.K. Simmons and Virginia Madsen), Caan is likely still most familiar to audiences for his TV work, even if he himself admits that “15 years ago, if you told me I was on a television show, I would say, ‘There’s no way.’ Now I feel like television’s kind of the game.”

It’s a game the actor has been

successful at, particularly with his Golden Globe-nominated role as “Danno” in the 2010-20 reimagining of *Hawaii Five-0*. Now, for his next regular series, he headlines *Alert* alongside Dania Ramirez.

Coming from executive producers Jamie Foxx and John Eisendrath (*The Blacklist*), *Alert* follows members of the Philadelphia Police Department’s Missing Persons Unit. Each episode features a life-or-death search for a missing person that runs alongside police officers Jason Grant (Caan) and his ex-wife Nikki Batista’s (Ramirez) series-long quest to find the truth about their own long-lost son.

After a decade on *Five-0*, it would have been understandable if Caan had not wanted to do a police drama right away, and he agrees that if this series had been just another procedural,

Alexandra  
Daddario

## ANNE RICE'S MAYFAIR WITCHES

AMC & AMC+

Sundays beginning Jan. 8  
**NEW SERIES!**

Vampires and witches make for some good TV (and reading). Author Anne Rice dedicated over 40 years to penning spellbinding stories around the dark and mystifying genre. In AMC's eight-episode first season of *Mayfair Witches*, viewers will meet the beautiful and brilliant Rowan (*The White Lotus*' Alexandra Daddario), an intuitive neurosurgeon who has special powers but is unaware that she comes from a dynasty of witches with a very unusual past. "The first season was deeply, deeply inspired by the first book, *The Witching Hour*," tells showrunner Esta Spalding. "It starts where the book starts, in that mood of New Orleans and the sort of ghost story of this house. We meet really quickly Rowan, who's the main character of the first book and throughout the series. ... The book is kind of an embarrassment of riches. It's very, very long and full of lots of amazing stuff. The middle section is about 300 or 400 pages of 13 generations of witches going all the way back to Scotland. So we used a piece of that and we're going to save some of that great story and saga of all the different generations for later seasons, should we be so lucky."

"I probably would've held out and looked for something else. ... To me, if you're going to do a cop show or a procedural — whether you've done one for 10 years before or not — you've got to figure out a way to make it better than the other ones, or make it special."

Upon reading *Alert*, Caan found that it did offer something special, and "a chance to do something I had never done before, although the lane is the same."

Caan had plenty more insights on *Alert*.

**Can you elaborate on what you found unique and exciting about *Alert*?**

**Scott Caan:** From the second I read this, I saw that [Jason and Nikki] were flawed characters, and I saw that their personal life was so important to the show working. I think a lot of the times on procedural shows, or cop shows in general, that's sort of left to the side. I had a conversation with [executive producer] John Eisendrath, and the things that were important to him are the same things that were important to me, and the things that I wanted to explore with these characters are the same things he wanted to explore. So just from reading this show, it had something special about it that was different than the others.

**Does the series primarily focus on solving current missing-persons cases, with flashbacks to Jason and Nikki's son disappearing?**

There's not a ton of flashbacks. The opening scene takes place six years before the actual show starts; you'll see us six years ago, [when] our son goes missing. Then, in the beginning of the first scene [in] the present day, we find our son ... or who we think is our son. And really, the struggle for [our] characters is trying to figure out what really happened, and who is this boy? Is he our son? ... So the drive of the personal part of the show is really us trying to figure out what

happened with our son, because there are a lot of twists and turns. One minute, we think he's our son; [another] minute, we think he's not our son. And that takes us through the 10 episodes of this first season.

**Not all real-life missing-persons cases end happily. Do stories on *Alert* ever veer into this darker territory, or are the cases generally solved in a satisfying manner?**

I mean, I think you know the answer to that question. There's a type of show where people want to see the happy ending. So when it comes to the procedural element of the show, we usually get a bad guy. But in our personal relationship — again, which is what makes the show different than the other procedural shows — our personal life does not get resolved.

Sometimes I think there's a reason that procedural shows aren't heavily serialized, and it's because I think that a lot of the people that watch [them] kind of want to just feel great at the end and not have anything left over. And that's totally fair. Sometimes you go home, and you want to watch a show that rips your heart out. And sometimes you want to watch a show that you're going to feel good at the end, and go to sleep and have good dreams. So we're kind of doing both.

**You had a pretty physical role on *Hawaii Five-0*. Is this similar, in that you chase down bad guys and maybe put some of your black-belt skills to use? Or is it more detective work?**

It's a bit of both. But honestly, man, I've had so many injuries that I'm ... I don't want to say "slowing down," but what I'm willing to risk my body for is getting ... I don't know. I look at Tom Cruise, and I'm like, "How's this dude still doing all that @#\$\$%?" So, yeah, I think there's definitely a bit of both, but I'm not as quick to go, "Hey, I want to do that stunt." — *Jeff Pfeiffer*

# WILL TRENT

**ABC** Tuesdays beginning Jan. 3  
**NEW SERIES!**

Based on Karin Slaughter's 10-book *Will Trent* series, about an Atlanta-based special agent with a highly successful clearance rate but a challenging personality, ABC's highly anticipated *Will Trent* procedural stars Ramón Rodríguez as its titular character. Rodríguez was happy to share some details about his upcoming role as the complicated special agent.

**How are we first introduced to Will Trent in the opening episode?**

**Ramón Rodríguez:** We meet him when he is bringing in a dog that was tied up outside to a shelter. Unfortunately, he learns that they won't be able to keep the dog, and so he ends up actually adopting this Chihuahua named Betty. He has no idea how to handle the dog. He has no clue. He's never had a dog. This is somebody that is very rigid. A large part of Will is really based on routine and control.

**We know Will comes with a complicated past — tell us a little bit about that.**

He's an orphan and was raised in a group home in Atlanta, and it was a pretty tough childhood. Slowly throughout the season, we get a sense of what actually happened to him. A lot of it has shaped him and has made him who he is. And he really enjoys solving things, particularly cases. He's got a really high solve rate. I think even in the book it's sort of attributed to what he's been through. He's got a lot of secrets. I don't want to spoil them all, but they do come out in the pilot. Very quickly, you learn one major one.

**Does this difficult background hinder his personal relationships?**

He's very much a loner. There is a character, Angie, in the book and in the series, from his childhood, who works in the Atlanta Police Department. He works in the Georgia Bureau of Investigation. They have a complicated relationship. It's sort of an on-again, off-again type of relationship that has gone way back. There's a different side to him when he is with Angie.

**Have you read any of the Will Trent books by Karin Slaughter in preparation?**

I read most. And then after a while, we had to start shooting the pilot. But I had a lot of conversations with the writers about what's in the books and what they're incorporating into the series. Karin Slaughter came to set, and I can only imagine how she must have felt. She seemed to be really excited. I was

really excited to meet her, obviously, because I just thought she created a really compelling character in Will Trent. I think he's a fascinating guy, and I wanted to thank her for that, for writing someone who I am really drawn to. I really feel for everything he's been through, and how he's overcome a lot of things in life. He's been able to take some of this trauma and turn it into a way to help him at work.

**Was there anything specific the author asked you to do when playing her popular character?**

No, it was very hands-off. I think she really loved everything she saw. And the reality is, her books are really dark, and we can only go so far on network television. People who read the books and are fans of the books, I think they're going to be happy. Obviously, we want to honor that, yet also make our own choices with the series and make sure that it's its own thing. — *Zhanna Slor*

Ramón Rodríguez



## “Accused” Guest Stars Include:



**Abigail Breslin** plays a young woman who goes catfishing to find a white nationalist who plowed his car through a peaceful demonstration.



**Rachel Bilson** stars in an episode about a family caught in a troubling situation.



**Margo Martindale** stars in a story tackling conspiracy theories.



**Malcolm-Jamal Warner** is a concerned and protective parent who deals with an incident involving his daughter in a park.



**Whitney Cummings** plays a stand-up comedian who contends with public opinion and courtroom bias in a sexual assault case.



**Wendell Pierce** plays a detective assigned to the case involving Warner's character.



Michael Chiklis

# ACCUSED

**FOX** Premieres Sunday, Jan. 22; airs Tuesdays beginning Jan. 24  
**NEW SERIES!**

When he sat down to write *Accused*, executive producer Howard Gordon (*Homeland*, 24) thought of the loneliest moments in a person's life. One was death, the other standing trial. “Your life, or the balance of it, or however much you have left of it, is now really on the line,” Gordon says. “You're in the box, and your life is going to change from this moment on forever.”

*Accused* is a 15-part anthology series featuring a different cast and a different story each week. Every episode opens in a courtroom with a defendant, and the story of how they got there unfolds from their perspective. “We are really experiencing the accumulating events that conspired against them to bring them to this moment, or the choices they made that got worse and led them to this,” Gordon says.

An all-star roster of actors and directors brings these stories to life. Michael Chiklis plays a brain surgeon who learns that his son may be planning a violent attack at school. Marlee Matlin makes her directorial debut in the tale of a deaf surrogate (Stephanie Noguera) who is forced to take protective action. Billy Porter directs the story of a drag queen's (J. Harrison Ghee) affair that has devastating consequences.

*Accused* is rooted in the reality and moral quandaries of our time. “It's about this revolutionary moment that we all find ourselves in,” Gordon says. “These are very, very human stories that could never have been told even five years ago. They're all very human-scale, very personal stories about very specific characters. But the material for the stories are along some of the fault lines of race, of power, of identity, of truth itself.”

And expect each episode to provoke thought and evoke emotion. “I do want the show, at the end of it, to leave people silent and thinking differently about what they thought than when they started the series,” Gordon says. — *Ryan A. Berenz*

Bella Ramsey and  
Pedro Pascal

# THE LAST OF US

How An Emotional  
Action-Adventure  
Video Game Turned  
Into One Of The  
Biggest Premieres Of  
The Winter. By Barb Oates

**HBO** Sundays beginning Jan. 15  
**NEW SERIES!**

**T**he world was warned in 1968.

Scientists predicted that bacteria and viruses weren't the world's biggest threat, but rather a fungus that would inhabit any living life-form and, in humans, act like a puppeteer taking control of their bodies and poisoning their minds.

But no one believed that ever would be possible.

That is, until Sept. 26, somewhere around 2013, when we first meet single father Joel Miller, played by Pedro Pascal (*The Mandalorian*), whose world comes crashing down on his 36th birthday after the fungus reaches the United States in HBO's *The Last of Us*.

From that fateful day, the series jumps 20 years ahead to a world where modern civilization has been destroyed. Joel is now a hardened survivor who's tasked with smuggling a 14-year-old girl named Ellie (*Game of Thrones*' Bella Ramsey) out of an oppressive quarantine zone. The series is an emotional, brutal and heartbreaking journey of survival — all based around a popular video game of the same name.

The nine-episode first season comes from the Emmy Award-winning creator of *Chernobyl*, Craig Mazin, and the creator of the acclaimed video game, Neil Druckmann. We caught up with these two geniuses as they shared some exclusive insights on what's to come.

### **When developing the video game, did you have a TV series in mind from the get-go?**

**Neil Druckmann:** No, not at all. When we made the game, we were already quite in the thick of it with trying to adapt *Uncharted* [the 2022 Tom Holland/Mark Wahlberg action movie], another franchise we created with Naughty Dog. And that took years and years and years to get off the ground, so that when we made this game, we were like, maybe we don't need to do these adaptations. We could just make video games. That's our bread and butter, that's fine. But then, because of *Uncharted*, even before we finished [*The Last of Us*], there were already production companies interested in seeing it and potentially optioning it. ... We gave it a few good attempts, but never felt confident enough to go any further than the script stage. That is, until I got to meet the wonderful Craig Mazin, of *Chernobyl* fame, and we chatted about how this could be adapted as a TV show. Once we had a handshake agreement, we were off to the races, and before I knew it, we were standing on the set of Joel's house, filming his adventure.

### **Craig, what got you excited about entering this world, and did you play the game before?**

**Craig Mazin:** I played it when it came out for PlayStation 3. I played it again when it came out in a remastered version for PlayStation 4. And then I played it again when it came out as a remake for PlayStation 5. And each time I played it twice through, so I'm on six playthroughs. Which in the world of *Last of Us* fandom is minor. But I just loved it, obviously. What got me interested was playing the game when it first came out. I stayed interested and couldn't believe the way fate lined up to put me in a room with Neil to say, "Hey, here's how I think it

should be done." There was no question in my mind about how it should be done. Sometimes I am racked with uncertainty, but not this time. It wasn't a question of did I pick the right thing to do? Did I pick the right way to do it? Did I pick the right person to do it with? Did I pick the right place to do it? No question. Yes, [adapt] this game, do it like this, do it with Neil, do it at HBO.

### **The first episode looked epic in scope, and the visuals were amazing. Could you speak to how large of a production this actually was?**

**Mazin:** Very large. I took to calling it an aircraft carrier. It was the largest production I've ever been involved with, and I've been involved with some big ones. We shot for 200 days, which was twice as long as we shot for *Chernobyl*. Seemingly an endless amount of time, but calendar-wise, it was about a year of shooting.

**Druckmann:** The challenging/exciting thing about this show is that the characters are in a totally different place each episode. So, that's why it's exciting for fans or viewers, because every episode is very different in its cast and location and what's happening. The through line is always Joel and Ellie. But that's what made this production so challenging — we didn't have sets that we could repeat and go back to like a lot of other TV shows. Every episode is completely different.

### **The emotional connection is a big part of the game. How did you make sure that was maintained in the TV series?**

**Druckmann:** The emotional connection between Joel and Ellie was everything for the game. When we were making the game, we would say, if that connection doesn't work, the game falls apart. Everything is built around that connection, and the evolution of that connection from where these characters first meet and they don't like each other, to how they learn to care more and more for each other over the course of this adventure and make greater and greater sacrifices for each other. So, that was a thing that we first had to get right with the outline of the season, then the scripts. That had to be on the page.

### **What can you tell us about the music behind the series and the '80s references?**

**Mazin:** Neil and Naughty Dog did a very interesting job of portraying what the world looks like after the apocalypse. They were very smart to ask simple questions, like "What happens to culture when the world stops?" And the answer is: It's not forgotten. People always love to look backwards, and particularly if there's nothing else coming now or forwards, what do they connect to? And there is something so weird about the '80s. I was a teenager in the '80s. Music was both terrible and amazing at the same time. ... In the '80s, you just had so much garbage, but then so much beautiful stuff amidst the garbage. And I love how the show, like the game, sort of picks out some of the beautiful things that came out of this forgotten past. There's a song that you'll see at the end of this first episode, which you'll hear again in a much, much different way. Things get recontextualized.



Andie MacDowell

# THE WAY HOME

HALLMARK CHANNEL

Sundays beginning Jan. 15

**NEW SERIES!**

Andie MacDowell stars in this fresh multigenerational family drama about single mother Kat Landry (Chyler Leigh), who, after some personal troubles, decides to return home to the small Canadian farm town of Port Haven with her 15-year-old daughter, Alice (Sadie Laflamme-Snow). Alice has never met her grandmother, Del (MacDowell), due to a long estrangement, and immediately goes about trying to understand what happened to leave her family so fractured. Luckily for her, and viewers, she is aided in her quest by some time travel back to 1999.

The former *Groundhog Day* and *Cedar Cove* star was excited to return to the network for a different approach to feel-good storytelling. "It's different for Hallmark. I think it's going to be something that surprises people in a really good way," MacDowell says. "I was blown away by it. There are aspects of romance in it, but it's more about relationships and family and how we carry the pain that we all carry and how we pass it on to each other.

"My storyline is about healing and empowerment and learning to open my heart," MacDowell continues. "There's a great loss in the pilot, and my daughter and I are estranged because of it. We don't really have a relationship until a lot of things go wrong with her personal life, and she comes home out of desperation and brings my granddaughter. To me, that was huge, because I imagined what it would feel like to be a grandmother who never really got to know her granddaughter. I love that part of my storyline. It's juicy."

As a mother of three, playing this role came very naturally to MacDowell, as did donning her stunning, natural shade of gray. "This is something that I feel like I've earned," MacDowell says. "I'm really proud of where I am in my life. Also, I want to help promote the idea that we are beautiful at every age, that we should be comfortable where we are. That we don't need to be ashamed of where we are. We're *valuable*. There's a huge value to grandparents. My grandmother was a huge influence on my life. My memories of her are so strong and so vivid and powerful. I love being able to play that kind of character because I think we need to see more of those types of characters, where a grandmother is a grandmother, and she's solid and comfortable in her skin being a role model as a grandmother. And that's one thing that I really love about Del."

Asked to rate the emotional side of the series with how many boxes of Kleenex viewers should bring, MacDowell says, "Oh, I think you're going to need a *lot* of Kleenex."

— Zhanna Stor

# THE WATCHFUL EYE

**FREEFORM** Mondays beginning Jan. 30  
**NEW SERIES!**

Nothing is as it seems when Elena (Mariel Molino), a determined young woman with a sordid history, moves into an upscale Manhattan apartment building to work as a live-in nanny for Matthew (Warren Christie), a wealthy widower, in *The Watchful Eye*, a new supernatural thriller premiering on Freeform. For one thing, the place seems haunted. For another, Elena has her own reasons for taking this position, and it's *not* to improve her resumé. Problems arise from the start, when Matthew's sister-in-law Tory (Amy Acker) intrudes on their job interview and attempts to keep Matthew from hiring Elena to watch her nephew. From then on, the two are at odds, both guarding their own secrets and moving forward with separate agendas. At times appearing cold and patronizing to the point of antagonistic, at others seeming like a woman who is barely keeping herself together after the death of her sister, Tory is one of many mysterious family members living in this ill-fated residence.

Acker shares with us that there's more to her character than meets the eye. "She's very misunderstood, I would say," Acker says of Tory. "She's kind of her own worst enemy a lot of the time. She feels like she's doing the right thing; she's keeping everybody in line and helping make everything perfect. But it just pushes people away so badly." Asked if she sees Tory as the villain she is made out to be, Acker says no. "I think she really does love the people she's with and wants what's best for them. What was fun about her was really getting to figure out what was under those walls. Because when it starts, all you know is this lady is not someone you want to be friends with," she says.

Acker, who has played many multifaceted characters — most famously, perhaps, the reserved scientist Winifred



Amy Acker

on the *Buffy the Vampire Slayer* spinoff show *Angel* (she is #TeamAngel, by the way) — says she enjoys the dichotomy of an ambivalent, even potentially unlikable character.

"That's a really fun part about acting for me," she says. "Finding the monster in the nice person and the human in the monster." Many of Acker's previous roles have been in the magical sphere, a space she definitely is drawn to. "I like doing supernatural stuff. It allows you to be a girl in a potato sack who turns into a demon goddess. That doesn't always happen on a procedural show. It lets you have so much range. Even in *Watchful Eye*, we have the horror element and the thriller element and the soapy element. Anything can happen, which I really like."

Also starring *Gilmore Girls'* Kelly Bishop as the audacious but mysterious Mrs. Ivey (Acker says she's her No. 1 reason to watch the show), *The Watchful Eye* is definitely one to keep an eye on. — *Zhanna Slor*

# NIGHT COURT

**NBC** Tuesdays beginning Jan. 17  
**NEW SERIES!**

This follow-up to NBC's 1984-92 sitcom *Night Court* stars former *The Big Bang Theory* costar Melissa Rauch (who is also an executive producer here) as eternally optimistic Judge Abby Stone. Following in the footsteps of her revered late father, Judge Harry Stone (played in the original series by Harry Anderson, who passed away in 2018), Abby takes on the challenge of overseeing the night shift of a Manhattan arraignment court.

A very notable and welcome link to that first series is costar John Larroquette, who

reprises his multiple Emmy-winning role of Dan Fielding. While Fielding was originally a prosecutor, Abby — as part of her quest to bring order and dignity to the court, and rein in its colorful crew of oddballs — enlists him to serve as the public defender. As he adjusts to his new boss and new job of defending the downtrodden, one thing about Fielding remains the same: his exceeding self-confidence. Newcomers to the franchise, along with Rauch, include India de Beaufort as Olivia, the court's officious assistant district attorney; Kapil Talwalkar as neurotic court clerk Neil; and Loretta as Donna "Gurges" Gurganous, the latest of *Night Court's* fiercely protective bailiffs. The series kicks off with back-to-back episodes on its premiere night.



Melissa Rauch



# FROZEN PLANET II

**BBC AMERICA** Saturdays beginning Jan. 28  
**NEW SERIES!**

In this follow-up to 2011's *Frozen Planet*, Sir David Attenborough (who else?) takes viewers back to regions where snow, ice and cold temperatures are home to some of Earth's most fascinating creatures. The six-part series visits the planet's poles, arid tundra, icy seas, snow-covered forests and mountain peaks to explore the lives of Siberian tigers, penguins, polar bears, snow monkeys and other hardy animals that can brave the extreme conditions. The series also looks at the measurable effects of climate change on these fragile ecosystems, and how our frozen planet is disappearing at an alarming rate. — *Ryan A. Berenz*

## Frozen Planet II Episodes

**Frozen Worlds** Journey through Earth's remote frozen lands and discover the incredible ways in which animals have overcome the challenges of survival.

**Frozen Oceans** Dive into a world of water and ice to reveal the animals that survive on and under the Arctic Sea.

**Frozen Peaks** Explore ice worlds born of altitude, where mountains pose a range of challenges for the animals that live there.

**Frozen South** In the most extreme climate on Earth, life finds a way to thrive in Antarctica.

**Frozen Lands** Visit the vast boreal forests of the north and the treeless tundra biome where seasons bring opportunities and challenges.

**Our Frozen Planet** As the future of frozen worlds is threatened, how will their loss affect humanity?



## DIONNE WARWICK: DON'T MAKE ME OVER

**CNN** Sunday, Jan. 1

Six Grammys and an amazing array of global solo and duet hits are just the tip of the iceberg for Dionne Warwick's six-decade career. The new CNN Films documentary *Dionne Warwick: Don't Make Me Over* premiered at the 2021 Toronto International Film Festival and was awarded first runner-up for the People's Choice Documentary Award. *Don't Make Me Over* combines archival

footage, personal photographs and newsreels of Warwick's career. Also featured are exclusive interviews with her sons Damon and David Elliott, along with a cavalcade of music legends including Burt Bacharach, Clive Davis, Gladys Knight, Olivia Newton-John, Stevie Wonder and a slew of others. It's a music documentary that floods the mind with memories of the artist who possesses an unmistakable velvet-toned voice.

The film also showcases Warwick's personal efforts outside of the recording studio highlighted in interviews with former President Bill Clinton, philanthropist and designer Kenneth Cole, amfAR HIV/AIDS research advocate Kevin Frost and the Rev. Jesse Jackson.

Also included, of course, are backstories behind "That's What Friends Are For," "Do You Know the Way to San Jose" and some of her other biggest hits. — *Paul Hall*

Howie Mandel,  
Heidi Klum,  
Terry Crews and  
Simon Cowell



## AMERICA'S GOT TALENT: ALL-STARS

**NBC** Mondays beginning Jan. 2  
**NEW SERIES!**

This addition to the popular *America's Got Talent* franchise brings together 60 acts to compete for the ultimate All-Star title. The roster of contestants is composed of winners, fan favorites and viral sensations from previous seasons of *AGT*, as well as from global *Got Talent* franchises including Australia, Britain, India, Romania and more. (Variations of *Got Talent* have aired in 194 territories worldwide since its 2006 American premiere, and it holds the Guinness World Records title as the most successful reality television format.)

Each week, 10 acts — ranging from singers and dancers to comedians, magicians, ventriloquists and others — will perform for the judges to earn one of five Golden Buzzers and move on to the finals. Fans will also be able to vote for one additional act per episode and put them in the finals. Following the final performances, the fans will vote again from among the 11 finalists to choose the winner, which will be revealed in the two-hour season finale. Judges are executive producer Simon Cowell, Heidi Klum and Howie Mandel, who reprise their *AGT* roles, as does host Terry Crews.

## SPECIAL FORCES: WORLD'S TOUGHEST TEST

**FOX** Wednesdays beginning Jan. 4  
**NEW SERIES!**

"I don't care how rich or famous they are," says Jason Fox. "They've entered our world, and they will play by our rules."

In this new reality series, 16 celebrities (people like Mel B, Kate Gosselin, Kenya Moore, Mike Piazza, Dr. Drew Pinsky and Jamie Lynn Spears) head to the Wadi Rum desert in Jordan, where Fox and a team of former commandos put them through the same mentally and physically grueling training that elite Special Forces soldiers endure. Facing brutal heat and treacherous terrain, the celebs dive from a helicopter into the Red Sea, escape a submerged Humvee, drive through an explosive urban combat zone

and tackle other hellish tasks.

There's no prize money at the end. So why put themselves through this? "The reason why I wanted to go was to really push myself to the limit, learn more about who I am, and really learn myself," says former NBA star Dwight Howard. "I wanted to be broken down and basically put back together."

— Ryan A. Berenz



## LINGO

**CBS**

Wednesdays  
beginning Jan. 11  
**NEW SERIES!**

The success of Wordle might have something to do with CBS picking up this new version of the game show that debuted in 1987 and has aired in various forms both in the U.S.



RuPaul  
Charles

and internationally since. RuPaul Charles hosts this edition in which teams of two face off in fast-paced puzzle rounds to guess letters that reveal seemingly simple words. At the end of each hourlong episode, the two winning teams compete in an intense final showdown in which one team will walk away with an additional big cash prize.



Cybill Shepherd

# HOW TO MURDER YOUR HUSBAND

**LIFETIME**

Saturday, Jan. 14  
**ORIGINAL FILM!**

Steve Guttenberg



Sometimes you stop dead in your tracks when a headline comes across the news, as it's so hard to believe something like this actually happened. Lifetime knows that all too well and continues to deliver ripped-from-the-headlines original movies with some serious star power. Cybill Shepherd and Steve Guttenberg headline the latest about Portland-based romance-thriller novelist Nancy Crampton-Brophy (Shepherd), who has a knack for writing about murder and women fantasizing about killing their own husbands ... and then she ends up killing her own husband (Guttenberg). Here's what the stars had to share on this one.

**When you got the script, what was your first reaction, knowing it was based on a true story?**

**Cybill Shepherd:** I was terrified to play her, because it was a true story. It was both a sense of horror and fascination — [fascination in] that she could love someone so deeply and then allegedly murder them.

**Steve Guttenberg:** It was a head scratcher. Why would Nancy do this? And truth is stranger than fiction.

**Being married to a woman who just wrote an essay on how to kill her husband, you can't help but think how that didn't raise some flags.**

**Guttenberg:** Your wife is an expert at murdering husbands. Hello! This guy had to be in some deep love to miss that little firecracker of a clue.

**You both have had iconic careers. What role do fans still ask you most about?**

**Shepherd:** *Taxi Driver*. True story, Scorsese called my agent and said he'd like a Cybill Shepherd type and my agent responded, "How about the real thing?" Scorsese never considered me for the role because there was no dialogue for this character. My agent told me, "Just show up for the casting, say nothing and you'll probably get it." After I was hired, Scorsese put me and Robert De Niro in a room together ad-libbing, which became the dialogue for the movie.

**Guttenberg:** Fans ask about *Police Academy*, *Short Circuit*, *Three Men and a Baby*, *The Bedroom Window*, *Cocoon*, *Home for the Holidays* and *It Takes Two*. — Barb Oates

Reba McEntire's *The Hammer*; Credit: Lifetime; How to Murder Your Husband; © 2022 A+E Networks, LLC. All rights reserved. Credit: Warren HUW/Courtesy of A+E Networks and Lifetime; © Allstar Foster/Lifetime



Reba McEntire

## REBA McENTIRE'S THE HAMMER

**LIFETIME** Saturday, Jan. 7  
**ORIGINAL FILM!**

Reba McEntire lays down the law with her mighty gavel in Lifetime's *The Hammer*. The country music legend smacks a crook upside the head with her gavel when he gets out of line and storms her judges bench. Based on the whirlwind life of traveling circuit judge Kim Wanker, the film features McEntire as Kim Wheeler, an outspoken, firecracker lawyer who is appointed judge of the 5th District of Nevada. The Lifetime original also marks McEntire's reunion with *Reba* costar Melissa Peterman (*Young Sheldon*).

# COMING LATER THIS YEAR

## ANIMAL CONTROL

**FOX** February

Joel McHale (*Community*) executive produces and stars in this live-action workplace comedy that follows a group of local Animal Control workers whose lives are complicated by the fact that animals are simple, but humans are not. McHale plays Frank, an opinionated, eccentric Animal Control officer and former cop who may not have gone to college but is still the most well-read person in the room.

## THE COMPANY YOU KEEP

**ABC** February

Following up his memorable run on *This Is Us*, Milo Ventimiglia headlines this twisty new drama. A night of passion leads to love between con man Charlie (Ventimiglia) and undercover CIA officer Emma (Catherine Haena Kim), who are unknowingly on a collision course professionally. While Charlie ramps up the "family business" so he can get out for good, Emma's closing in on the vengeful criminal who holds Charlie's family debts in hand — forcing them to reckon with the lies they've told so they can save themselves and their families from disastrous consequences.

## FOUND **NBC** February

In any given year, more than 600,000 people are reported missing in the U.S. Roughly half that number are people of color the country seems to forget about. Public relations specialist Gabi Mosely (series star and producer Shanola Hampton) and her crisis management team now make sure there is always someone looking out for the forgotten missing people. But unbeknownst to anyone, this everyday hero is hiding a chilling secret of her own.

## GWEN SHAMBLIN: STARVING FOR SALVATION

**LIFETIME** February

Jennifer Grey stars as the controversial religious leader (founder of the Tennessee-based Remnant Fellowship Church) and Christian diet guru (Weigh Down Workshop) who positioned herself as God's prophet and preached the virtues of being thin. Gwen's reign came to a tragic end in May 2021, when the plane that her husband Joe was flying crashed shortly after takeoff, killing everyone onboard. Her story is being told in this Lifetime original movie.

## HISTORY'S GREATEST HEISTS WITH PIERCE BROSNAN

**HISTORY** February

Pierce Brosnan hosts this series that uses cinematic re-creations, first-person accounts from people who were there and on-camera narration appearances from Brosnan himself to delve deep into the most epic, real-life heists that made global headlines. Featured are the Lufthansa heist, the half-billion-dollar Gardner Museum art theft, the United California Bank heist and more. Read our interview with Brosnan about the series in our February issue.

## NOT DEAD YET

**ABC** February

Adapted from the book *Confessions of a Forty-something F\*\*k Up* by Alexandra Potter, the dramedy follows Nell Serrano (Gina Rodriguez), a broke and newly single self-described disaster, working to restart the life and career she left behind five years ago. When she lands the only job she can find — writing obituaries — Nell starts getting life advice from an unlikely source.

## PARTY DOWN

**STARZ** February

Fans will be thrilled to see this 2009-10 cult comedy return with six all-new episodes that follow the original (fictitious) Los Angeles catering team — a sextet of Hollywood wannabes stuck working for tips while hoping for their "big break." Each episode of this half-hour comedy finds the hapless catering team working a new event and inevitably getting tangled up with the colorful guests and their absurd lives. Returning original cast members include Adam Scott, Ken Marino, Jane Lynch, Martin Starr, Ryan Hansen and Megan Mullally.

## TRUE LIES **CBS**

February/March

Inspired by the Arnold Schwarzenegger and Jamie Lee Curtis action/comedy film from James Cameron, the series follows Harry (Steve Howey), a first-class international spy for a U.S. intelligence agency, and his wife Helen (Ginger Gonzaga), a language professor bored with her daily routine, who makes the shocking discovery that her seemingly ordinary husband is leading an extraordinary double life.

## THE WALKING DEAD: DEAD CITY

**AMC** April

The first of three *Walking Dead* spinoffs planned, *Dead City* follows Maggie (Lauren Cohan) and Negan (Jeffrey Dean Morgan) traveling into a postapocalyptic Manhattan long ago cut off from the mainland. The crumbling city is filled with the dead and denizens who have made New York City their own world full of anarchy, danger, beauty and terror. When we last left the enemies, Maggie was at a place where she was showing some trust, but never forgiveness.

# YOUR HONOR

What's Next, After Losing Everything? Bryan Cranston Returns To His Heartbreaking Role In "Your Honor."

By Barb Oates

**Showtime** Sundays beginning Jan. 15 (streaming premiere is Jan. 13)

## SEASON PREMIERE!

"I like to have as normal of a life as possible," Bryan Cranston tells us. "Borderline boring."

Hard to imagine from a man who has mesmerized TV, movie and Broadway audiences for decades now with his award-winning performances. And, hardly reality when he's been whirlwinding the world in Spain filming Wes Anderson's *Asteroid City*, London filming *Argylle*, as well as producing and writing and running his Dos Hombres mezcal business with *Breaking Bad* pal Aaron Paul.

When we caught up with Cranston, he was back in Los Angeles returning to his role as Judge Michael Desiato in Showtime's tense drama *Your Honor*. The multi-Emmy and Tony winner originally wrapped the limited series believing Michael's story ended in "a lovely, tragic way" that was "very appropriate." When he was approached with a second season premise, he was intrigued.

"You realize if the first season was about a man who compromises his principles, then the second season is about redemption," Cranston tells. "Can a person who lost everything find a way back to some kind of life? And that's what got me excited about it."

Here Cranston helps answer some of our burning questions on the new season.

**Michael has lied and betrayed so many of his friends, yet we still want him to come out of this OK. Why is that?**

**Bryan Cranston:** I think because the original sin was understandable. I think it's more apparent to a parent. When I ask the question, "What would you do to save your child's life?," I have not met a parent, not yet, who doesn't say, "I would do anything." And that's the feeling you have. You would do anything if you truly felt your child's life was being threatened. That's your job. And that's where your heart is. And so when that initial question was proposed, the audience got a dose of that, in saying he was just trying to protect his son. That's all he was doing, and I get it.

But, that being said, there is a penalty, the repercussions of those decisions, and that is the spiral effect that happened in our storytelling. . . . He had to make that immediate decision and it changed his life forever, and his son's life. The ripple effect of that, we'll see more in the second season. We'll see how deeply it goes. When there's a loss, it doesn't just stay within the first realm of people connected to that person directly. There's an indirect ripple effect that happens, and that's what we're going to show. But I wanted to really explore redemption and the power of forgiveness and the authenticity of grief, allowing ourselves to be in it.

**When we pick up in Season 2, Michael is almost unrecognizable. First, is that beard real? Can you talk about this transformation?**

It's a real beard, real hair, real thinness. It was a transition that I wanted to make and to look different because it is different. His whole point of view, as you'll see, is different. He is not the same man. And I wanted to allow the audience to see how despair and grief changes a person, and your priorities change, your outlook on life changes.

**How does he even begin to start making amends with some of the people he loved and betrayed, like Lee (Carmen Ejogo)?**

Each person that he comes in contact with, there is a trepidation from both sides about how this is handled. How do we go on from here? How is that possible? With Lee, it was an unfortunate and disturbing kind of ending with so many lies and so much misdirection, and the manipulation pushed her into a place where she just couldn't take it anymore. She, too, has got to deal with the ramifications of that. He was not only a mentor to her, but now a lover, and it's like she was starting to devote her personal life toward him, and it devastated her. So we'll see how she handles that in Season 2. I wanted to explore these darker tones, but we're going to do it in a way that doesn't allow the audience to just sit in the macabre.

**Both Michael and Jimmy Baxter (Michael Stuhlbarg) now share similar grief over the loss of a son. How would you describe their level of interactions this season? Can both of these**

**men really remain in the same city still?**

They're odd and strange bedfellows now. And we will find out that they have even more in common than the loss of a child. They have a direct interaction throughout the season, and not necessarily in a good way. But it kind of fluctuates. There's an odd understanding that the two characters have.

**Rosie Perez is joining the cast this season. Is she a friend or a foe to you?**

She is coming in and she is a thorn in my side, I can tell you that. She is a dynamo and a very powerful person, both in personality and the character, and in position. Her position professionally is very dynamic and has a direct impact on Michael's life. They are at odds most of the time, almost all. But Rosie is just such a great performer and a contender. For her physical release, Rosie loves boxing and she actually boxes. So I feel like our scenes together are in the ring together, and we're just trading punches.

**So where else does the series take us?**

So there's intrigue, there's still plotlines and we get to a resolution of also how my wife died. That comes to the surface, that big question mark. And of course, being originally *Your Honor* — a courtroom drama — we are going to end with another really significant courtroom scene.

**“Breaking” Down Bryan Cranston Fans**

When asked to break down his fan encounters by the characters people most stop him about, Bryan Cranston calculates the following:



Breaking Bad Credit: Frank Ockenfels/AMC Broadway © 2014 Getty Images Credit: Andrew H. Walker Malcolm in the Middle © 20th Century Fox/Courtesy Everett Collection/Dorothy Finggold Seinfeld Credit © 2017 NBCUniversal, Inc. Credit: J. Delvalle/NBCU

Will Josh Allen be the savior for long-suffering Buffalo Bills fans?

## FINALLY?

Two Star-Crossed Teams Have Their Sights On Super Bowl LVII.

By Ryan A. Berenz

Buffalo Bills and Minnesota Vikings fans have been here before: Regular-season success only resulting in playoff heartbreak.

### NFL Postseason Schedule

#### AFC and NFC Wild Card Playoffs

Jan. 14-16 (ABC/ESPN, CBS, FOX & NBC)

#### AFC and NFC Divisional Playoffs

Jan. 21-22 (CBS, FOX & NBC)

#### AFC and NFC Championship Games

Jan. 29 (CBS & FOX)

#### Super Bowl LVII in Glendale, Arizona

Feb. 12 (FOX)

The famously hexed Bills lost four straight Super Bowls from 1990-93, with the wide-right field goal vs. the New York Giants in Super Bowl XXV the most notorious defeat. They were on the losing end of the "Music City Miracle" wild-card game vs. the Tennessee Titans in 1999. In the past two playoffs,

Josh Allen and the Bills offense couldn't keep up with Patrick Mahomes and the Kansas City Chiefs. The Bills remain one of

12 NFL teams without a Lombardi Trophy.

Also on that list are the Vikings, who lost four Super Bowls between 1969-76. They have lost six NFC Championship Games, including gut-wrenching overtime losses to the Atlanta Falcons in the 1998 season and the New Orleans Saints in 2009.

Both the Vikings and Bills should be in the hunt for top seeds in their conferences when the regular season wraps up on Jan. 8. The Chiefs, Titans and Miami Dolphins are also among the AFC's elite, while the Philadelphia Eagles, Dallas Cowboys and San Francisco 49ers look like contenders in a weak NFC.

The postseason kicks off Jan. 14, and it all culminates in Super Bowl LVII at State Farm Stadium in Glendale, Arizona, Feb. 12 on FOX. Perhaps the stars will align and it will be Bills vs. Vikings in the big game, though that could cause the football universe to collapse.

## THE DEPTH CHART

### Figure Skating

The U.S. Figure Skating Championships in San Jose, California, air on **USA Network** and **NBC** Jan. 26-29. The ISU European Championships in Espoo, Finland, air on **E!** Jan. 25-28.

### NHL Winter Classic

The NHL Winter Classic outdoor game returns to Boston's Fenway Park for the first time since 2010 as the Bruins host the Pittsburgh Penguins Jan. 2 on **TNT**.

### Australian Open Tennis

It's summer Down Under! Novak Djokovic will be allowed in Australia for the first Grand Slam of 2023. Rafael Nadal is reigning men's champion, while women's champ Ashleigh Barty retired from tennis. **ESPN** and **ESPN2** have coverage Jan. 15-29.

### NBA Basketball

The NBA on Martin Luther King Jr. Day Jan. 16 features Boston at Charlotte (**NBA TV**), Miami at Atlanta (**TNT**), Phoenix at Memphis (**TNT**) and Houston at the L.A. Lakers (**NBA TV**).



Rafael Nadal

PREMIER BOXING CHAMPIONS



WBA LIGHTWEIGHT WORLD CHAMPIONSHIP

GERVONTA  
**DAVIS**

VS

HECTOR LUIS  
**GARCIA**

SATURDAY, JAN. 7 **SHOWTIME** | PPV



**LIVE!** Saturday, Jan. 7 at 9pm (ET)

Standard Definition: \$74.99 • Channel 462      High Definition: \$74.99 • Channel 460

Event subject to availability on DISH. Programming and fight card subject to change without notice.



Order now: Call 1-877-DISH PPV (347-4778) or online at [mydish.com/boxing](http://mydish.com/boxing)

© 2023 All rights reserved. All bouts and times subject to change.

**NETFLIX**

Website:  
netflix.com

**Subscription Cost:** Basic with ads \$6.99/month (can only watch on one device at a time), Basic \$9.99/month (one device at a time), Standard \$15.49/month (two devices at a time), Premium \$19.99/month (four devices at a time).

**ORIGINAL SERIES**



**Kaleidoscope**  
Available Jan. 1  
This crime-drama anthology series takes a nonlinear approach to its storytelling, offering a different immersive viewing experience to Netflix members as they watch the episodes — each of which is a puzzle piece —

in unique orders and enter the story at different moments in time. That story spans 25 years and follows a crew of master thieves attempting to crack a seemingly unbreakable vault. Giancarlo Esposito, Rufus Sewell and Paz Vega lead the ensemble cast.



**Woman of the Dead**  
Available Jan. 5  
This Austrian thriller follows undertaker Brünhilde Blum (Anna Maria Mühle), who has to deal with death on a daily basis, but when her husband is murdered, she is completely thrown off and embarks on a quest

for revenge. During her search for the killers, this unconditionally loving wife and mother proves to also be a ruthless hunter, but she becomes increasingly cornered herself and must face the abyss of her own harrowing past.



**Copenhagen Cowboy**  
Available Jan. 5  
This six-episode Danish thriller is a neon-drenched noir that follows enigmatic young heroine Miu (Angela Bundalovic). After a lifetime of servitude, and on the verge of a new beginning, she traverses the ominous

landscape of Copenhagen's criminal underworld. Searching for justice and enacting vengeance, she encounters her nemesis, Raket (Lola Corfixen), as they embark on an odyssey through the natural and the supernatural.

**Represent**  
Available Jan. 20

Jean-Pascal Zadi cocreated, directed and stars in this French comedy as Stéphane Blé, an idealistic educator who is inadvertently thrust into France's presidential race.



**That '90s Show**  
Available Jan. 19  
This direct spinoff of the hit 1998-2006 sitcom *That '70s Show* is set in 1995, and goes back to Point Place, Wisconsin, where Leia Forman (Callie Haverda), daughter of Eric and Donna (Topher Grace and Laura Prepon,

who, along with Ashton Kutcher, Mila Kunis and Wilmer Valderrama, make guest appearances in their original roles), is spending the summer with grandparents Kitty and Red (Debra Jo Rupp and Kurtwood Smith, reprising their characters as series regulars). There, Leia bonds with a new generation of Point Place kids.



**The Makanai: Cooking for the Maiko House**  
Available Jan. 12  
This Japanese series is acclaimed creator and Palme d'Or winner Hirokazu Koreeda's first Netflix production. Based on the bestselling manga *Maiko-san Chi no Makanai-san*, it is set in the geisha district of Kyoto, where

Kiyo (Nana Mori) becomes a Makanai (person who cooks meals) at a house where Maiko (apprentice geishas) live together. The series depicts the everyday life of Kiyo and her childhood friend who accompanied her to Kyoto, amid a vibrant world of geisha and Maiko courtesans, and delicious food.



**Junji Ito Maniac: Japanese Tales of the Macabre**  
Available Jan. 19  
Twenty chilling tales penned by horror manga master Junji Ito, all with the shared theme of madness, are adapted in this anime series.

**The Lying Life of Adults**  
Available Jan. 4

This drama adapts Italian novelist Elena Ferrante's novel, telling a powerful story of young Giovanna's (Giordana Marengo) transition from childhood to adolescence in 1990s Naples — a city divided between the heights, which assumes a mask of refinement, and the depths, a place of excess and vulgarity. Adrift, Giovanna vacillates between these two worlds, falling into one and then climbing back to the other.

Kaleidoscope: © 2022 Netflix, Inc. Website: netflix.com. Woman of the Dead: © 2022 Netflix, Inc. Website: netflix.com. Copenhagen Cowboy: © 2022 Netflix, Inc. Website: netflix.com. That '90s Show: © 2022 Netflix, Inc. Credit: Patrick Wynne. Junji Ito Maniac: Japanese Tales of the Macabre: Credit: Netflix. The Makanai: Cooking for the Maiko House: Credit: Netflix.

## MORE ORIGINAL SERIES



### Lockwood & Co.

Available  
Jan. 27

In a world plagued by ghosts, where giant corporations employ psychic teens to battle

the supernatural, only one company operates without adult supervision: Lockwood & Co. It is run by Anthony Lockwood (Cameron Chapman), a rebellious young entrepreneur haunted by his mysterious past; his brilliant but eccentric sidekick George (Ali Hadji-Heshmati); and a newly arrived, supremely gifted girl named Lucy (Ruby Stokes). This renegade trio is about to unravel a terrifying mystery that will change the course of history.



### The Snow Girl

Available  
Jan. 27

Málaga, Spain, 2010. A magical moment turns into a nightmare for the Martin family when their daughter Amaya

disappears in the crowd at the Three Wise Men parade. Miren (Milena Smit), a journalist in training, begins an investigation parallel to that of Inspector Millán (Aixa Villagrán) that awakens aspects of her past she would like to forget. With the help of her colleague Eduardo (José Coronado), Miren will not stop until she finds the girl.

### Shahmaran

Available Jan. 20

In this Turkish mystery/drama/love story, Sahu (Serenay Sarikaya) is determined to confront her grandfather, who left her mother behind years ago in Adana. On this journey, she finds herself in the middle of an unusual and mysterious community called Mar, descended from Shahmaran. Believing in the legend of Shahmaran, one of the greatest symbols of love and wisdom, the Mar race awaits the completion of the historical prophecy with the arrival of Sahu, and nothing will be the same again when her path crosses with Maran's (Burak Deniz).

## FEATURE FILM EXCLUSIVE



### The Pale Blue Eye

Available Jan. 6

This Gothic horror/mystery takes place in 1830, where, at West Point, a cadet is found dead, with his heart skillfully removed. The leaders of the fledgling military academy turn to a local detective, Augustus Landor (Christian Bale), to

solve the murder. Stymied by the cadets' code of silence, Landor enlists the help of one of their own to pursue the case, an eccentric cadet with a disdain for the rigors of the military and a penchant for poetry — a young man named Edgar Allan Poe (Harry Melling). Gillian Anderson, Toby Jones and Robert Duvall costar.

## ORIGINAL FILM



### You People

Available Jan. 27

A new couple (Jonah Hill and Lauren London) fall in love and find themselves confronting societal expectations, generational differences and clashing cultures among their families (played by Eddie Murphy

and Nia Long, and Julia Louis-Dreyfus and David Duchovny). The comedy is the feature film directorial debut for *black-ish* creator Kenya Barris, who cowrote the screenplay with Hill.

## ORIGINAL SPECIAL

### Best of Standup 2022

Available Dec. 31

This compilation special looks back at 2022's funniest moments from Netflix stand-up comedy specials.

## RETURNING ORIGINAL SERIES

**Chicago Party Aunt** — Season 2 Available Dec. 30

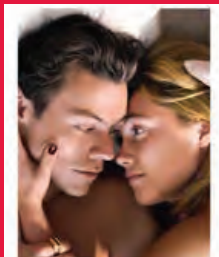
**Ginny & Georgia** — Season 2 Available Jan. 5

**Record of Ragnarok** — Season 2, Part 1 Available Jan. 26

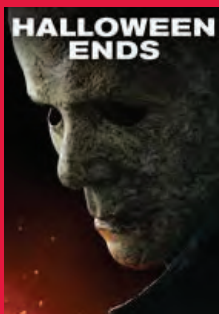
**Sky Rojo** — Season 3 Available Jan. 13

**Vikings: Valhalla** — Season 2 Available Jan. 12

Don't Miss These **HOLLYWOOD HITS**



Don't Worry Darling



For movie descriptions, premiere dates and ordering information, see pages 32-35

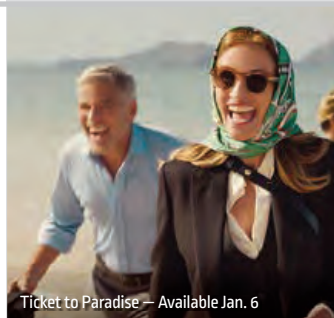
Extended Previews, Sneak Peeks and Exclusive Interviews on Channel 102

SUN.	MON.	TUE.
<p><b>1</b></p> <p>Beast Black Warrant Bullet Train Clerks III Detective Knight: Redemption Don't Worry Darling Elvis The Fabelmans Halloween Ends High Heat Lyle, Lyle, Crocodile</p> <p>Mindcage Paradise Highway Savage Salvation Smile 2025 Armageddon Violent Night Where the Crawdads Sing The Woman King</p>	<p><b>2</b></p> <p>Beast Black Warrant Bullet Train Clerks III Detective Knight: Redemption Don't Worry Darling Elvis The Fabelmans Halloween Ends High Heat Lyle, Lyle, Crocodile</p> <p>Mindcage Paradise Highway Savage Salvation Smile 2025 Armageddon Violent Night Where the Crawdads Sing The Woman King</p>	<p><b>3</b></p> <p>Beast Black Warrant Bullet Train Detective Knight: Redemption Don't Worry Darling Elvis The Fabelmans Halloween Ends High Heat Lyle, Lyle, Crocodile Mindcage</p> <p><b>Prey for the Devil</b> Savage Salvation Smile 2025 Armageddon Violent Night Where the Crawdads Sing The Woman King</p>
<p><b>8</b></p> <p>Beast Black Warrant Bullet Train Detective Knight: Redemption Don't Worry Darling Elvis The Fabelmans Halloween Ends High Heat Lyle, Lyle, Crocodile Mindcage</p> <p>Prey for the Devil Savage Salvation Smile Ticket to Paradise Violent Night Where the Crawdads Sing The Woman King</p>	<p><b>9</b></p> <p>Beast Black Warrant Bullet Train Detective Knight: Redemption Don't Worry Darling Elvis The Fabelmans Halloween Ends High Heat Lyle, Lyle, Crocodile Mindcage</p> <p>Prey for the Devil Savage Salvation Smile Ticket to Paradise Violent Night Where the Crawdads Sing The Woman King</p>	<p><b>10</b></p> <p>Beast Black Warrant Bullet Train Detective Knight: Redemption Don't Worry Darling Elvis <b>The Estate</b> The Fabelmans Halloween Ends High Heat Lyle, Lyle, Crocodile</p> <p>Prey for the Devil Savage Salvation Smile Ticket to Paradise Violent Night Where the Crawdads Sing The Woman King</p>
<p><b>15</b></p> <p>Beast Black Warrant Bullet Train Elvis The Estate The Fabelmans Halloween Ends Lyle, Lyle, Crocodile The Old Way On Sacred Ground Prey for the Devil Savage Salvation</p> <p>Smile Ticket to Paradise Violent Night Where the Crawdads Sing The Woman King</p>	<p><b>16</b></p> <p>Beast Black Warrant Bullet Train Elvis The Estate The Fabelmans Halloween Ends Lyle, Lyle, Crocodile The Old Way On Sacred Ground Prey for the Devil Savage Salvation</p> <p>Smile Ticket to Paradise Violent Night Where the Crawdads Sing The Woman King</p>	<p><b>17</b></p> <p>Beast <b>Black Adam</b> Bullet Train Elvis The Estate <b>Gunfight at Rio Bravo</b> Halloween Ends Lyle, Lyle, Crocodile The Old Way On Sacred Ground Savage Salvation</p> <p><b>Snow Falls</b> Ticket to Paradise Violent Night Where the Crawdads Sing The Woman King</p>
<p><b>22</b></p> <p>Beast Black Adam Black Warrant Bullet Train Detective Knight: Independence Elvis The Estate Gunfight at Rio Bravo Halloween Ends Lyle, Lyle, Crocodile</p> <p>The Old Way Savage Salvation Snow Falls Ticket to Paradise Where the Crawdads Sing The Woman King</p>	<p><b>23</b></p> <p>Beast Black Adam Black Warrant Bullet Train Detective Knight: Independence Elvis The Estate Gunfight at Rio Bravo Halloween Ends Lyle, Lyle, Crocodile</p> <p>The Old Way Savage Salvation Snow Falls Ticket to Paradise Where the Crawdads Sing The Woman King</p>	<p><b>24</b></p> <p>Beast Black Adam Black Warrant Bullet Train Detective Knight: Independence Elvis The Estate Gunfight at Rio Bravo Halloween Ends The Old Way</p> <p>Ticket to Paradise Where the Crawdads Sing The Woman King</p>
<p><b>29</b></p> <p>Beast Black Adam Black Warrant Bullet Train Detective Knight: Independence Elvis The Estate Gunfight at Rio Bravo Halloween Ends The Old Way</p> <p>Ticket to Paradise Where the Crawdads Sing The Woman King</p>	<p><b>30</b></p> <p>Beast Black Adam Black Warrant Bullet Train Detective Knight: Independence Elvis The Estate Gunfight at Rio Bravo Halloween Ends The Old Way</p> <p>Ticket to Paradise Where the Crawdads Sing The Woman King</p>	<p><b>31</b></p> <p>Beast Black Adam Black Warrant <b>Blood</b> <b>Bones and All</b> Bullet Train Detective Knight: Independence Elvis The Estate Gunfight at Rio Bravo</p> <p>Halloween Ends The Old Way Ticket to Paradise Where the Crawdads Sing The Woman King</p>

WED.	THURS.	FRI.	SAT.
<p><b>4</b></p> <p>Beast Black Warrant Bullet Train Detective Knight: Redemption Don't Worry Darling Elvis The Fabelmans Halloween Ends High Heat</p> <p>Lyle, Lyle, Crocodile Mindcage Prey for the Devil Savage Salvation Smile 2025 Armageddon Violent Night Where the Crawdads Sing The Woman King</p>	<p><b>5</b></p> <p>Beast Black Warrant Bullet Train Detective Knight: Redemption Don't Worry Darling Elvis The Fabelmans Halloween Ends High Heat</p> <p>Lyle, Lyle, Crocodile Mindcage Prey for the Devil Savage Salvation Smile 2025 Armageddon Violent Night Where the Crawdads Sing The Woman King</p>	<p><b>6</b></p> <p>Beast Black Warrant Bullet Train Detective Knight: Redemption Don't Worry Darling Elvis The Fabelmans Halloween Ends High Heat</p> <p>Lyle, Lyle, Crocodile Mindcage Prey for the Devil Savage Salvation Smile <b>Ticket to Paradise</b> Violent Night Where the Crawdads Sing The Woman King</p>	<p><b>7</b></p> <p>Beast Black Warrant Bullet Train Detective Knight: Redemption Don't Worry Darling Elvis The Fabelmans Halloween Ends High Heat</p> <p>Lyle, Lyle, Crocodile Mindcage Prey for the Devil Savage Salvation Smile Ticket to Paradise Violent Night Where the Crawdads Sing The Woman King</p>
<p><b>11</b></p> <p>Beast Black Warrant Bullet Train Detective Knight: Redemption Don't Worry Darling Elvis The Estate The Fabelmans Halloween Ends High Heat</p> <p>Lyle, Lyle, Crocodile Prey for the Devil Savage Salvation Smile Ticket to Paradise Violent Night Where the Crawdads Sing The Woman King</p>	<p><b>12</b></p> <p>Beast Black Warrant Bullet Train Detective Knight: Redemption Don't Worry Darling Elvis The Estate The Fabelmans Halloween Ends High Heat</p> <p>Lyle, Lyle, Crocodile Prey for the Devil Savage Salvation Smile Ticket to Paradise Violent Night Where the Crawdads Sing The Woman King</p>	<p><b>13</b></p> <p>Beast Black Warrant Bullet Train Elvis The Estate The Fabelmans Halloween Ends Lyle, Lyle, Crocodile <b>The Old Way</b> <b>On Sacred Ground</b></p> <p>Prey for the Devil Savage Salvation Smile Ticket to Paradise Violent Night Where the Crawdads Sing The Woman King</p>	<p><b>14</b></p> <p>Beast Black Warrant Bullet Train Elvis The Estate The Fabelmans Halloween Ends Lyle, Lyle, Crocodile The Old Way On Sacred Ground Prey for the Devil</p> <p>Savage Salvation Smile Ticket to Paradise Violent Night Where the Crawdads Sing The Woman King</p>
<p><b>18</b></p> <p>Beast Black Adam Bullet Train Elvis The Estate Gunfight at Rio Bravo Halloween Ends Lyle, Lyle, Crocodile The Old Way On Sacred Ground</p> <p>Savage Salvation Snow Falls Ticket to Paradise Violent Night Where the Crawdads Sing The Woman King</p>	<p><b>19</b></p> <p>Beast Black Adam Bullet Train Elvis The Estate Gunfight at Rio Bravo Halloween Ends Lyle, Lyle, Crocodile The Old Way On Sacred Ground</p> <p>Savage Salvation Snow Falls Ticket to Paradise Violent Night Where the Crawdads Sing The Woman King</p>	<p><b>20</b></p> <p>Beast Black Adam Black Warrant Bullet Train <b>Detective Knight: Independence</b> Elvis The Estate Gunfight at Rio Bravo Halloween Ends</p> <p>Lyle, Lyle, Crocodile The Old Way Savage Salvation Snow Falls Ticket to Paradise Where the Crawdads Sing The Woman King</p>	<p><b>21</b></p> <p>Beast Black Adam Black Warrant Bullet Train Detective Knight: Independence Elvis The Estate Gunfight at Rio Bravo Halloween Ends</p> <p>Lyle, Lyle, Crocodile The Old Way Savage Salvation Snow Falls Ticket to Paradise Where the Crawdads Sing The Woman King</p>
<p><b>25</b></p> <p>Beast Black Adam Black Warrant Bullet Train Detective Knight: Independence Elvis The Estate Gunfight at Rio Bravo Halloween Ends The Old Way</p> <p>Ticket to Paradise Where the Crawdads Sing The Woman King</p>	<p><b>26</b></p> <p>Beast Black Adam Black Warrant Bullet Train Detective Knight: Independence Elvis The Estate Gunfight at Rio Bravo Halloween Ends The Old Way</p> <p>Ticket to Paradise Where the Crawdads Sing The Woman King</p>	<p><b>27</b></p> <p>Beast Black Adam Black Warrant Bullet Train Detective Knight: Independence Elvis The Estate Gunfight at Rio Bravo Halloween Ends The Old Way</p> <p>Ticket to Paradise Where the Crawdads Sing The Woman King</p>	<p><b>28</b></p> <p>Beast Black Adam Black Warrant Bullet Train Detective Knight: Independence Elvis The Estate Gunfight at Rio Bravo Halloween Ends The Old Way</p> <p>Ticket to Paradise Where the Crawdads Sing The Woman King</p>



Black Adam — Available Jan. 17



Ticket to Paradise — Available Jan. 6




The Estate — Available Jan. 10



© 2022 Focus Features, LLC.

### Armageddon Time

(Drama) The American dream is different for everyone, and one young boy learns that not everyone is viewed as equal in an ever-evolving world. *Anne Hathaway, Jeremy Strong, Anthony Hopkins* (R, 1:54) **Premieres Jan. 10**


 **Make It A Movie Night!** A great tale of the pursuit of the American dream.



© 2022 Warner Bros. Credit: Alan Amic.

### Black Adam

(Action) He was given amazing powers by the gods but quickly imprisoned. As Black Adam is released from his earthly tomb, he is posed with a choice: Destroy the world in a vengeful rage or help to save it. *Dwayne Johnson, Aldis Hodge, Pierce Brosnan* (PG-13, 2:05) **Premieres Jan. 17**

 **Make It A Movie Night!** Dwayne Johnson joins the DC Universe!



© 2022 Searchlight Pictures.

### The Menu

(Thriller) A young couple travels to a remote island to visit an exclusive restaurant with an amazing chef. But this lavish menu is filled with surprises at every turn. *Ralph Fiennes, Anya Taylor-Joy, Nicholas Hoult* (R, 1:47) **Premieres Jan. 17**



© 2022 Lionsgate.

### Prey for the Devil

(Horror) Sister Ann was told at a young age about the voice that was residing within her mother's head. She believed the story that the spirit within had a bigger target than her mother — it wanted Ann. Now, as a grown woman in the ministry, she learns more about fighting these demons and will go where women hadn't gone within the church. *Jacqueline Byers, Christian Navarro, Colin Salmon* (PG-13, 1:33) **Premieres Jan. 3**



# Make It A Movie Night!

CRITIC PICK OF THE MONTH



## Make It A Movie Night!

Heart-wrenching and real, *Till* provides viewers with a bit of a history lesson along with a lot of encouragement. Danielle Deadwyler plays Mamie Till in an award-worthy performance. Her fight to tell the world what happened to her son impacted countless individuals to this day. American history is filled with moments that horrify us and others that uplift us. *Till* has both of these feelings in one film. One woman can change the world.

It's my pick of the month.

*Paul Hall is a nationally syndicated film critic and member of the Critics Choice Association (CCA).*

## Till

(Drama) Emmett Till is murdered in a brutal lynching in 1955, and his mother makes it her mission to expose the racism that was behind the attack. She strives to have the individuals responsible for the death of her 14-year-old boy brought to justice in Mississippi. One mother's actions can change the world. *Danielle Deadwyler, Jalyn Hall, Frankie Faison* (PG-13, 2:10) **Premieres Jan. 17**

## On Demand

- **Previews** CH. 500
- **Movies** CH. 501-535

## Ordering A Movie Is Easy!

### By Remote:

Keep your receiver phone line or internet connected at all times.

1. Go to Channels 500-535.
2. Find your movie and select "Rent Now."

### By Phone:

Call toll-free 1-877-DISH  
PPV (347-4778)

### By Text Message:

Text MOVIE to 34741 and follow the text instructions.

### By Internet:

Log on to  
[mydish.com/movies](http://mydish.com/movies)  
Phone line or broadband internet connection not required if ordering online or by phone.

### By MyDISH App:

Download the MyDISH App and select "Movies&Events" on the SERVICES tab.

## DISH On Demand

Channels 500-535

- Standard and High Definition: \$5.99 Each
- Same Day as Theatrical: \$6.99 Each\*

For more information about HD programming on DISH, or to find out how to upgrade to an HD-capable receiver, call 1-800-333-DISH (3474).



## Tár

(Drama) In the international world of classical music, Lydia Tár is considered one of the greatest living composers and conductors. She is also the first ever female conductor of a major German orchestra, and this is her story. *Cate Blanchett, Mark Strong, Nina Hoss* (R, 2:38) **Premieres Jan. 3**



**Make It A Movie Night!** Cate Blanchett headlines this awards darling.

SHOWING THIS MONTH

Action

- Black Adam High Heat
- Black Warrant Savage Salvation
- Bullet Train Violent Night
- Detective Knight: Independence The Woman King
- Detective Knight: Redemption

Comedy

- Clerks III Ticket to Paradise
- The Estate

Drama

- Aftersun The Fabelmans
- Armageddon Time On Sacred Ground
- Bones and All Tár
- Don't Worry Darling Till
- Elvis Where the Crawdads Sing

Family

- Lyle, Lyle, Crocodile
- Puss in Boots: The Last Wish

Horror

- Halloween Ends Smile
- Prey for the Devil Snow Falls

Sci Fi

- 2025 Armageddon

Suspense

- Blood Mindcage

Thriller

- Beast The Menu
- M3gan Paradise Highway

Western

- Gunfight at Rio Bravo The Old Way



**The Estate**

(Comedy) When learning that their difficult aunt is terminally ill, two sisters hatch a plan to win her over in hopes of becoming the beneficiaries of her estate. But with a lot of wealth comes a lot of competition, as they aren't the only greedy family members who want a piece of the woman's estate. *Toni Collette, Anna Faris, David Duchovny* (R, 1:36) **Premieres Jan. 10**

**Make It A Movie Night!** A funny cast brings us an offbeat title.



**Puss in Boots: The Last Wish**

(Family) Puss in Boots has reached a bit of a breaking point: He has used eight of this nine lives. Becoming a lap cat has never been in his DNA, but can he live the last life in his existence to its fullest? *Voices of Antonio Banderas, Salma Hayek, Harvey Guillén* (PG, 1:40) **Premieres Jan. 17**

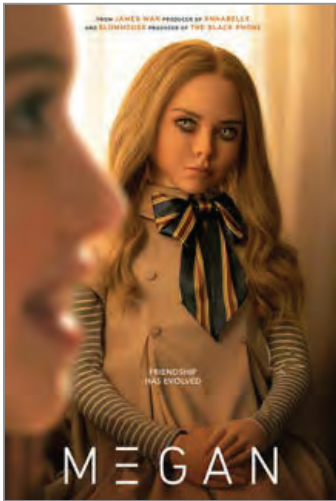


**Aftersun**

(Drama) As Sophie reflects on a holiday she took with her father 20 years earlier, she is flooded with memories, some real and some imagined, and tries to decipher the difference between the father she knew and the man she didn't. *Paul Mescal, Frankie Corio, Celia Rowleson-Hall* (R, 1:42) **Premieres Jan. 17**

# On Demand

- **Previews** CH. 500
- **Movies** CH. 501-535



© 2022 Universal Studios.

**M3gan**  
(Thriller) A robotics engineer at a toy company sets out to create a revolutionary doll as a friend to her young niece. The lifelike creation that starts out as the perfect playmate who only cares about the well-being of the girl develops a mind of its own. *Allison Williams, Violet McGraw, voice of Jenna Davis* (PG-13, 1:42)  
**Premieres Jan. 24**



© 2022 Tw Film, LLC.

**The Old Way**  
(Western) An old gunslinger will do anything to protect his daughter. But when the consequences of his past arrive in the form of the son of a man the gunslinger murdered years before, will he be able to withstand the onslaught? *Nicolas Cage, Clint Howard, Abraham Benrubi* (R, 1:36)  
**Premieres Jan. 13**



© 2022 United Artists Releasing.



**Bones and All**  
(Drama) A story of first love for a young woman who is struggling to survive on the margins of society. She meets a drifter and they set off on a thousand-mile journey that ends with a final stand to determine if their love will survive. *Taylor Russell, Timothée Chalamet, Mark Rylance* (R, 2:10)  
**Premieres Jan. 31**

# ADULTS ONLY.



## Order On Channel 490 or 499

Adult Showcase offers EIGHT of the best adult channels, including XTSY, Hustler TV, Hustler HD, Reality Kings TV, TEN, Vivid, BraZZers and Real Extreme for up to three consecutive hours for only \$17.99.

 <b>Channel 489</b> 4 Hours for \$13.99 X 50% OFF!	 <b>Channel 491</b> 90 Minutes for \$13.99 XX1/2	 <b>Channel 492</b> 90 Minutes for \$13.99 XX1/2
 <b>Channel 493</b> 90 Minutes for \$13.99 XX1/2	 <b>Channel 494</b> 90 Minutes for \$13.99 XX1/2	 <b>Channel 495</b> 90 Minutes for \$13.99 XX1/2
 <b>Channel 496</b> 90 Minutes for \$13.99 XX1/2	 <b>Channel 497</b> 90 Minutes for \$13.99 XX1/2	 <b>Channel 498</b> 90 Minutes for \$13.99 XXX

**Adult Programming May Be Found On Channels 488-499.**

**To order:**

- > Use your remote
- > Order online at [mydish.com/adult](http://mydish.com/adult)
- > Call 1-877-DISH PPV (347-4778)

### SETTING PARENTAL CONTROLS:

**For Hopper, Joey and Wally:**  
Menu > Settings > Parental Controls > Hide Adult Programs.

**For ViP: Menu > Locks > Hide Adult.**

Movies, prices & schedules subject to change. Some channels require a DISH 500. Must be at least 18 years or older to order. Blackout restrictions apply.  
© 2023 Reality Kings, LLC, All Rights Reserved. © 2023 Spice Entertainment Inc.

HBO



**C.B. Strike** Jan. 9

In Season 5, titled "Troubled Blood," private detective Cormoran Strike takes on the cold case of a woman who went missing under mysterious circumstances in 1974. *Tom Burke, Holliday Grainger, Linda Bassett* (TV-MA)



**Hard Knocks in Season: Arizona Cardinals** Jan. 11

Season 2 of this *Hard Knocks* documentary series following the Arizona Cardinals as they navigate the challenges of an NFL season concludes. (TV-MA)



**Hereditary** Jan. 14

After a matriarch passes away, her daughter's family begins to experience terrifying events as secrets about their ancestry are revealed. *Toni Collette, Gabriel Byrne, Alex Wolff* (R)

SHOWTIME



**A Love Song** Jan. 5

Faye is a lone traveler who bides her time at a rural Colorado campground as she awaits the arrival of Lito, a figure from her past who's navigating his own tentative and nomadic journey across the rugged West. *Dale Dickey, Wes Studi, Michelle Wilson* (PG)



**Boys in Blue** Jan. 6

This four-part docuseries focuses on Minneapolis high school football players who were coached and mentored by police officers in the aftermath of George Floyd's murder. (TV-MA)



**George & Tammy** Jan. 8

The limited drama series about country music power couple Tammy Wynette and George Jones concludes with "Justified & Ancient." *Jessica Chastain, Michael Shannon, Steve Zahn* (TV-MA)

STARZ



**Dangerous Liaisons** Jan. 1

The origin story of young lovers the Marquise de Merteuil and the Vicomte de Valmont in Paris concludes with "It's War." *Alice Englert, Nicholas Denton, Lesley Manville* (TV-MA)



**The Gateway** Jan. 3

A down-on-his-luck social worker finds himself in over his head when he tries to protect a client from her recently paroled husband — a maniacal drug dealer out to reclaim his priceless stash. *Shea Whigham, Olivia Munn, Frank Grillo* (R)



**2 Minutes of Fame** Jan. 5

A stand-up comic hopes to hit the big time in Los Angeles after he becomes a social media sensation. *Jay Pharoah, Katt Williams, Keke Palmer* (R)

EPIX



**Top Gun: Maverick** Jan. 1

Pete "Maverick" Mitchell is back as a test pilot who, after more than 30 years of service, is just trying to stay in the air. Capt. Mitchell must prepare a new group of flyers for combat like no pilot has seen before. *Tom Cruise, Jennifer Connelly, Miles Teller* (PG-13)



**Secret Headquarters** Jan. 3

When Charlie and his friends discover that his dad is a powerful superhero, the youngsters spring into action to defend his secret headquarters and save the planet from a villainous threat. *Owen Wilson, Michael Peña, Walker Scobell* (PG)



**Jackass Forever** Jan. 4

The boys are back together and they have one mission: to make you laugh at their ridiculous stunts, which you should not try at home. Some new friends are along with the older, but not more mature, cast you love. *Johnny Knoxville, Steve-O, Chris Pontius* (R)



**The Last of Us** Jan. 15

Twenty years after modern civilization has been destroyed, a hardened survivor is hired to smuggle a 14-year-old girl out of an oppressive quarantine zone. *Pedro Pascal, Bella Ramsey, Gabriel Luna* (TV-MA)



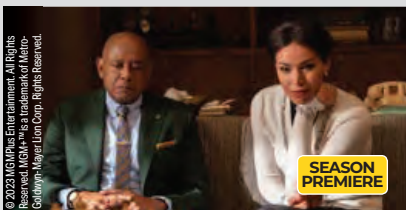
**Agent Game** Jan. 14

A CIA agent finds himself the target of a rendition operation after being scapegoated for the death of an interrogation subject. *Dermot Mulroney, Mel Gibson, Jason Isaacs* (R)



**BMF** Jan. 8

The drama series based on the true-life story of brothers and 1980s Detroit drug kingpins Demetrius "Big Meech" Fenory and Terry "Southwest T" Fenory returns for Season 2. *Demetrius "Lil Meech" Fenory Jr., Da'Vinchi, Russell Hornsby* (TV-MA)



**Godfather of Harlem** Jan. 15

In the crime drama's 10-episode third season, Bumpy Johnson continues to battle for control of Harlem, going up against the Cuban mafia, the Italian mob, Latin assassins and the CIA. *Forest Whitaker, Vincent D'Onofrio, Ilfenesh Hadera* (TV-MA)



**Game Theory With Bomani Jones** Jan. 20

Sports journalist and commentator Bomani Jones returns for Season 2 of his weekly, late-night series that breaks down timely issues playing out in the world of sports. (TV-MA)



**Your Honor** Jan. 15

Bryan Cranston returns as Michael Desiato, a New Orleans judge whose life is derailed by his teenage son's accidental hit-and-run killing of the son of a notorious crime boss. *Also stars Michael Stuhlbarg, Hope Davis* (TV-MA)



**Youth in Revolt** Jan. 11

A pretentious teenager invents a French alter ego in the hope of seducing a pretty neighbor. *Michael Cera, Portia Doubleday, Jean Smart* (R)



**Murf the Surf: Jewels, Jesus and Mayhem in the USA** Jan. 15

This four-part documentary series pulls back the curtain on America's most infamous jewel thief, Jack Roland Murphy, and his spiraling tale of crime, murder, deception and mayhem. (TV-MA)

# SHOWING THIS MONTH

HBO

- American Ultra
- The Artist
- The Cabin in the Woods
- Captain Phillips
- C.B. Strike (Season Premiere)
- Every Secret Thing
- Game Theory With Bomani Jones (Season Premiere)
- Gemini
- Hard Knocks in Season: The Arizona Cardinals (Season Finale)
- Hereditary
- The Homesman
- The Iron Lady
- The Last of Us (New Series)
- Law Abiding Citizen
- The Lobster
- The Master
- Nine
- Precious Cargo
- The Promise
- Regression

SHOWTIME

- Agent Game
- Bad Santa
- Boxing: Charlo vs. Tszyu
- Boys in Blue (New Series)
- Changing Lanes
- Crawl
- Dreamer: Inspired by a True Story
- George & Tammy (Series Finale)
- The Holiday
- The L Word: Generation Q (Season Finale)
- The Last Castle
- A Love Song Men
- Moneyball
- Paid in Full
- Panama
- Terminator Genisys
- True Grit
- Your Honor (Season Premiere)

STARZ

- Adult Beginners
- As of Yet
- The Benefactor
- Bent
- BMF (Season Premiere)
- The Commando
- Dangerous Liaisons (Series Finale)
- Dear White People
- Fast Color
- The Gateway
- The Hit
- Immortals
- Janky Promoters
- Lovelace
- Lying and Stealing
- Oscar Nominated Short Films 2022: Live Action
- Paradise Highway
- Queen of Glory
- The Swearing Jar
- 2 Minutes of Fame
- A Week in Paradise
- X-Men: First Class
- Youth in Revolt

EPIX

- Blacklight
- Dog
- Godfather of Harlem (Season Premiere)
- Heatwave
- House of Gucci
- The Hustler
- Jackass Forever
- Licorice Pizza
- The Lost City
- Muppets From Space
- Murf the Surf: Jewels, Jesus and Mayhem in the USA (New Series)
- Orphan: First Kill
- Secret Headquarters
- Sonic the Hedgehog 2
- Top Gun: Maverick
- Torn Hearts

# CHANNEL PACK DIRECTORY

## America's Top 120 | 190 + Channels

A&E HD	118
AMC HD	131
Animal Planet HD	184
AXS TV HD	167
BabyFirstTV SAP	823
Beauty iQ	73
Believers' Voice of Victory Network	265
BOUNCE	359
Bravo HD	129
BUZZR	245
BYUTV	9403
Cartoon Network (E) HD SAP	176
Cartoon Network (W)	177
CGTN Español	884
CGTNN	279
Christian Television Network	267
CMT HD	166
CNBC HD	208
CNN HD SAP	200
Comedy Central HD	107
Comet HD Only	289
The Cowboy Channel	232
Cozi	253
CRAFT	221
C-SPAN SAP	210
C-SPAN2	211
Daystar	263
DEAL	95
Discovery Channel HD	182
DISH Multi-Channel View	100
DISH Music Channels	923-946
DISH Studio HD	102
Disney Channel (E) HD	172
Disney Channel (W)	173
E! Entertainment Television HD	114
Enlace	9411
EPIC	85
ESPN HD	140
ESPN2 HD	143
ESPNEWS HD	142
ESPNU HD	141
ESPN Alternate	144-145
EVINE Live	134
EWTN	261
Faith USA	269
Family Entertainment TV	82
FM	243
FMC	387
Folk TV	218
Food Network HD	110
FOX Business HD	206
FOX News Channel HD	205
FOX Sports 1 HD	150
Freeform HD	180

Free Speech TV (FSTV)	9415
Fuse HD	164
FX HD SAP	136
FXX HD	125
Gem Shopping Network	229
getTV	373
Great American Living	248
GRIT HD	217
Heroes & Icons	293
HGTV HD	112
Hillsong Channel	258
History HD	120
HITN	843
HLN	202
Hopper Insider	103
HSN HD	74
HSN2	226
IFC HD	133
Impact Network	268
In Country Television	230
INSP	259
Investigation Discovery HD	192
ION	250
Jewelry Television	83/227
Justice Central	240
Kids & Teens Television (KTV)	264
LAFF TV	237
Lifetime HD SAP	108
Link TV	9410
Local Channels HD (ABC, CBS, FOX, NBC)	2-70
Mercury TV (MALL)	86/220
MeTV2	247
MLB Extra Innings	565
MotorTrend Network HD	246
MSNBC HD	209
MTV HD	160
MTV Live HD	369
MTV2	161
NASA	286
National Geographic	197
Newsmax HD	216
NewsNation HD	239
NEWSY	283
NHL Center Ice HD	475
Nick/Nick at Nite (E) HD SAP	170
Nick/Nick at Nite (W)	171
On Demand Guide	500
Paramount Network HD	241
Pop	117
Pursuit	393
QVC HD SAP	137
QVC2 HD	255

Real	94/223
RECTV	284
Reelz HD SAP	299
Sale SAP	225
Shepherd's Chapel Network	256
SiriusXM HD	99
SiriusXM	6002-6096
SonLife Broadcasting SAP	257
Syfy HD	122
TBN	260
TBS HD SAP	139
3 Angels Broadcasting Network	9393
TLC HD	183
TNT HD SAP	138
Travel Channel HD	196
truTV HD	242
TV Games Network	399
TV Land HD	106
TVG2	398
USA HD SAP	105
V-ME HD	881
VH1 HD	162
WE tv HD	128
The Weather Channel HD	214
WeatherNation HD	215
YouTV	228
Z Living HD Only	191

### America's Top 120 PLUS 190 + Channels

AT 120 Plus includes most networks from AT 120, plus these additional channels:

Big Ten Network HD	405
Big Ten Network HD	410
FOX Sports 2 HD	149
Longhorn Network HD <sup>1</sup>	407
NFL Network HD	154
Pac-12 Network HD	406
Pac-12 Network HD	409
SEC Network HD	404
SEC Network HD	408
Tennis Channel HD	400
World Fishing Network	394

#### KEY:

HD = Channels broadcast in SD and HD unless noted as (HD only)

HD = Available on all Hopper, Joey, and Wally receivers. Select the "+" icon to expand all channels.

SAP = Second Audio Program (Spanish)

1 = Only in HD for live events

2 = MeTV channel numbers vary depending on local market



<b>POP</b>		
Sirius Hits 1	99-2	6002
'50s on 5	99-5	6005
'60s on 6	99-6	6006
'70s on 7	99-7	6007
'80s on 8	99-8	6008
'90s on 9	99-9	6009
Coffee House	99-14	6014
The Pulse	99-15	6015
The Blend	99-16	6016
The Beatles	99-18	6018

<b>ROCK</b>		
Elvis Radio	99-19	6019
E Street Radio	99-20	6020
Underground Garage	99-21	6021
Pearl Jam Radio	99-22	6022
The Grateful Dead	99-23	6023
Radio Margaritaville	99-24	6024
Classic Rewind	99-25	6025
Classic Vinyl	99-26	6026
Deep Tracks	99-27	6027
Spectrum	99-28	6028
Jam On	99-29	6029
The Loft	99-30	6030
The Bridge	99-32	6032
1st Wave	99-33	6033
Lithium	99-34	6034
Sirius XMU	99-35	6035
Alt Nation	99-36	6036
Octane	99-37	6037
Boneyard	99-38	6038
Hair Nation	99-39	6039
Liquid Metal	99-40	6040
Faction	99-41	6041
The Joint	99-42	6042

<b>HIP-HOP/R&amp;B</b>		
Starting On Channel ...	99-45	6045

<b>DANCE/ELECTRONIC</b>		
Starting On Channel ...	99-53	6053

<b>COUNTRY</b>		
The Highway	99-56	6056
Y2Kountry	99-57	6057
Prime Country	99-58	6058
Willie's Roadhouse	99-59	6059
Outlaw Country	99-60	6060
Bluegrass Junction	99-62	6062

<b>CHRISTIAN</b>		
Starting On Channel ...	99-63	6063

<b>JAZZ/STANDARDS</b>		
Starting On Channel ...	99-66	6066

<b>CLASSICAL</b>		
Starting On Channel ...	99-74	6074

<b>LATIN/WORLD</b>		
Viva	99-91	6091
Aguila	99-94	6094
Caliente	99-95	6095

**PLUS SO MANY MORE!**

## America's Top 200 | 240 + Channels

A&E HD	118	E! Entertainment Television HD	114	Impact Network	268	Pursuit	393
AMC HD	131	Enlace	9411	In Country Television	230	QVC HD SAP	137
Animal Planet HD	184	EPIC	85	INSP	259	QVC2 HD	255
AXS TV HD	167	ESPN HD	140	<b>Investigation Discovery</b> HD	192	Real	94/223
BabyFirstTV SAP	823	ESPN2 HD	143	ION	250	RECTV	284
<b>BBC America</b> HD	135	ESPNEWS HD	142	Jewelry Television	83/227	Reelz HD SAP	299
Beauty iQ	73	ESPNU HD	141	Justice Central	240	<b>RFD-TV</b> HD	231
Believers' Voice of Victory Network	265	ESPN Alternate	144-145	Kids & Teens Television (KTV)	264	Sale SAP	225
<b>BET</b>	124	<b>Estrella TV</b>	852	LAFF TV	237	<b>Science</b> HD	193
<b>Big Ten Network</b> HD	405	EVINE Live	134	Lifetime HD SAP	108	<b>SEC Network</b> HD	404
<b>Big Ten Network</b> HD	410	EWTN	261	Link TV	9410	<b>SEC Network</b> HD	408
<b>Boomerang</b> SAP	175	Faith USA	269	<b>LMN</b> HD	109	Shepherd's Chapel Network	256
BOUNCE	359	Family Entertainment TV	82	Local Channels HD (ABC, CBS, FOX, NBC)	2-70	SiriusXM HD	99
Bravo HD	129	FM	243	<b>Longhorn Network</b> HD <sup>1</sup>	407	SiriusXM	6002-6096
BUZZR	245	FMC	387	<b>Magnolia Network</b> HD	111	SonLife Broadcasting SAP	257
BYUTV	9403	Folk TV	218	Mercury TV (MALL)	86/220	<b>SundanceTV</b> HD	126
Cartoon Network (E) HD SAP	176	Food Network HD	110	MeTV <sup>2</sup>	247	Syfy HD	122
Cartoon Network (W)	177	FOX Business HD	206	MLB Extra Innings	565	TBN	260
<b>CBS Sports Network</b> HD	158	FOX News Channel HD	205	<b>MLB Network</b> HD	152/478	TBS HD SAP	139
CGTN Español	884	FOX Sports 1 HD	150	MotorTrend Network HD	246	<b>TCM</b> HD SAP	132
CGTNN	279	<b>FOX Sports 2</b> HD	149	MSNBC HD	209	<b>TeenNick</b>	181
Christian Television Network	267	Freeform HD	180	MTV HD	160	<b>Tennis Channel</b> HD	400
CMT HD	166	Free Speech TV (FSTV)	9415	MTV Live HD	369	3 Angels Broadcasting Network	9393
CNBC HD	208	Fuse HD	164	MTV2	161	TLC HD	183
CNN HD SAP	200	FX HD SAP	136	NASA	286	TNT HD SAP	138
Comedy Central HD	107	FXX HD	125	<b>Nat Geo WILD</b> HD	190	Travel Channel HD	196
Comet HD Only	289	<b>FYI</b> HD	119	National Geographic	197	truTV HD	242
<b>Cooking Channel</b> HD	113	<b>Galavision</b> HD	273/833	<b>NBA TV</b> HD SAP	156	TV Games Network	399
The Cowboy Channel	232	<b>Game Show Network</b> HD	116	Newsmax HD	216	TV Land HD	106
Cozi	253	Gem Shopping Network	229	<b>NewsNation</b> HD	239	TVG2	398
CRAFT	221	getTV	373	NEWSY	283	<b>UniMas</b> HD	271/830
C-SPAN SAP	210	<b>Golf Channel</b> HD	401	NFL Network HD	154	<b>Univision (E)</b> HD	270/827
C-SPAN2	211	Great American Living	248	NHL Center Ice HD	475	<b>Univision (W)</b>	828
Daystar	263	GRIT HD	217	<b>NHL Network</b> HD	157	<b>Univision Deportes</b> HD	397/856
DEAL	95	<b>Hallmark Channel</b> HD	185	<b>Nick Jr.</b>	169	<b>UPtv</b>	188
Discovery Channel HD	182	<b>Hallmark Drama</b>	186	Nick/Nick at Nite (E) HD SAP	170	USA HD SAP	105
<b>Discovery Family</b> HD	179	<b>Hallmark Movies &amp; Mysteries</b> HD	187	Nick/Nick at Nite (W)	171	V-ME HD	881
DISH Multi-Channel View	100	Heroes & Icons	293	<b>Olympic Channel</b>	389	VH1 HD	162
DISH Music Channels	923-946	HGTV HD	112	On Demand Guide	500	<b>VICE</b> HD	121
DISH Studio HD	102	Hillsong Channel	258	<b>Outdoor Channel</b> HD	396	WE tv HD	128
Disney Channel (E) HD	172	History HD	120	<b>OWN</b> HD	189	The Weather Channel HD	214
Disney Channel (W)	173	HITN	843	<b>Oxygen</b>	127	WeatherNation HD	215
<b>Disney Junior</b>	168	HLN	202	<b>Pac-12 Network</b> HD	406	World Fishing Network	394
<b>Disney XD</b> SAP	174	Hopper Insider	103	<b>Pac-12 Network</b> HD	409	YouTV	228
<b>DPLCL</b>	270/827	HSN HD	74	Paramount Network HD	241	Z Living HD Only	191
		HSN2	226	Pop	117		
		IFC HD	133				

## America's Top 250 | 290 + Channels

A&E HD	118
AMC HD	131
<b>American Heroes Channel</b> HD	195
Animal Planet HD	184
AXS TV HD	167
BabyFirstTV SAP	823
BBC America HD	135
Beauty iQ	73
<b>beIN SPORTS</b> HD SAP	392/781
beIN Sports in Espanol HD SAP	873
Believers' Voice of Victory Network	265
BET HD	124
<b>BET Her</b> HD Only	251
Big Ten Network HD	405
Big Ten Network HD	410
<b>TheBlaze</b>	212
<b>Bloomberg Television</b> HD	203
Boomerang SAP	175
BOUNCE	359
Bravo HD	129
BUZZR	245
BYUTV	9403
Cartoon Network (E) HD SAP	176
Cartoon Network (W)	177
CBS Sports Network HD	158
CGTN Español	884
CGTNN	279
Christian Television Network	267
CMT HD	166
CNBC HD	208
CNN HD SAP	200
Comedy Central HD	107
Comet HD Only	289
Cooking Channel HD	113
<b>The Cowboy Channel</b>	232
Cozi	253
CRAFT	221
C-SPAN SAP	210
C-SPAN2	211
Daystar	263
DEAL	95
<b>Destination America</b> HD	194
Discovery Channel HD	182
Discovery Family HD	179
DISH Multi-Channel View	100
DISH Music Channels	923-946
DISH Studio HD	102
Disney Channel (E) HD	172
Disney Channel (W)	173
Disney Junior	168
Disney XD SAP	174
DPLCL	270/827
E! Entertainment TV HD	114

Enlace	9411
EPIC	85
<b>EPIX Drive-In/ MGM+ Drive-In</b>	292
ESPN HD	140
ESPN2 HD	143
ESPNEWS HD	142
ESPNU HD	141
ESPN Alternate	144-145
Estrella TV	852
EVINE Live	134
EWTN	261
Faith USA	269
Family Entertainment TV	82
FM	243
FMC	387
Folk TV	218
Food Network HD	110
FOX Business HD	206
FOX News Channel HD	205
FOX Sports 1 HD	150
FOX Sports 2 HD	149
Freeform HD	180
Free Speech TV (FSTV)	9415
Fuse HD	164
Fusion	244
FX HD SAP	136
<b>FXM</b> HD	384
FXX HD	125
FYI HD	119
Galavision HD	273/833
Game Show Network HD	116
Gem Shopping Network	229
getTV	373
Golf Channel HD	401
<b>Great American Family</b> HD	165
Great American Living	248
GRIT HD	217
Hallmark Channel HD	185
Hallmark Drama	186
Hallmark Movies & Mysteries HD	187
Heroes & Icons	293
HGTV HD	112
Hillsong Channel	258
History HD	120
HITN	843
HLN	202
Hopper Insider	103
HSN HD	74
HSN2	226
IFC HD	133
Impact Network	268
In Country Television	230
INSP	259
Investigation Discovery HD	192
ION	250
Jewelry Television	83/227
Justice Central	240
Kids & Teens Television (KTV)	264

LAFF TV	237
Lifetime HD SAP	108
Link TV	9410
LMN HD	109
Local Channels HD (ABC, CBS, FOX, NBC)	2-70
<b>Logo</b> HD	254
Longhorn Network HD <sup>1</sup>	407
Magnolia Network HD	111
Mercury TV (MALL)	86/220
MeTV <sup>2</sup>	247
MLB Extra Innings	565
MLB Network HD	152/478
MotorTrend Network HD	246
<b>The Movie Channel (W)</b> SAP	329
<b>The Movie Channel Xtra (W)</b>	330
<b>MoviePlex</b>	377
MSNBC HD	209
MTV HD	160
<b>MTV Classic</b>	163
MTV Live HD	369
MTV2	161
NASA	286
Nat Geo WILD HD	190
National Geographic	197
NBA TV HD SAP	156
<b>NBC Universo</b> HD	838
Newsmax HD	216
NewsNation HD	239
NEWSY	283
NFL Network HD	154
NHL Center Ice HD	475
NHL Network HD	157
Nick/Nick at Nite (E) HD SAP	170
Nick/Nick at Nite (W)	171
Nick Jr.	169
<b>Nicktoons</b>	178
Olympic Channel	389
On Demand Guide	500
Outdoor Channel HD	396
OWN HD	189
Oxygen	127
Pac-12 Network HD	406
Pac-12 Network HD	409
Paramount Network HD	241
Pop	117
Pursuit	393
QVC HD SAP	137
QVC2 HD	255
Real	94/223
RECTV	284
Reelz HD SAP	299
RFD-TV HD	231
Sale SAP	225
Science HD	193
SEC Network HD	404

SEC Network HD	408
Shepherd's Chapel Network	256
SiriusXM HD	99
SiriusXM	6002-6096
<b>Smithsonian Channel</b> HD	367
SonLife Broadcasting Network SAP	257
<b>Sportsman Channel</b> HD	395
<b>STARZ Encore (W)</b> SAP	341
<b>STARZ Encore Action</b> SAP	343
<b>STARZ Encore Black</b>	345
<b>STARZ Encore Classic</b>	346
<b>STARZ Encore Family</b>	347
<b>STARZ Encore Suspense</b>	344
<b>STARZ Encore Westerns</b>	342
SundanceTV HD	126
Syfy HD	122
TBN	260
TBS HD SAP	139
TCM HD SAP	132
TeenNick	181
Tennis Channel HD	400
3 Angels Broadcasting Network	9393
TLC HD	183
TNT HD SAP	138
Travel Channel HD	196
truTV HD	242
TV Games Network	399
TV Land HD	106
TVG2	398
UniMas HD	271/830
Univision (E) HD	270/827
Univision (W)	828
Univision Deportes HD	397/856
UPtv	188
USA HD SAP	105
V-ME HD	881
VH1 HD	162
VICE HD	121
WE tv HD	128
The Weather Channel HD	214
WeatherNation HD	215
World Fishing Network	394
YouTV	228
Z Living HD Only	191

**KEY:**

HD = Channels broadcast in SD and HD unless noted as (HD) only

HD = Available on all Hopper, Joey, and Wally receivers. Select the "+" icon to expand all channels.

SAP = Second Audio Program (Spanish)

1 = Only in HD for live events

2 = MeTV channel numbers vary depending on local market

## Additional Packages

### Multi-Sport Pack

beIN SPORTS	392/871
beIN SPORTS en Español	873
Big Ten Network	405/410
FOX Sports 2	149
Longhorn Network	407
MLB Network	152
MLB Strike Zone	153
NBA TV	156
NFL Network	154
NFL RedZone	155
NHL Network	157
Outside TV	390
Pac-12 Network	406/409
SEC Network	404/408

Plus additional Regional Sports Networks

Requires subscription to AT120 PLUS or higher.

### Regional Sports Networks\*

Hopper, Wally, Joey	412
All other receivers	409-437

### DISH Music Channels

All receivers	923-946
---------------	---------



HBO (E)	310
HBO (W)	311
HBO 2	312
HBO Latino	313
HBO Signature	314
HBO Family	315



Cinemax	307
5 Star Max	308
More Max	309



Showtime (E)	318
Showtime (W)	319
Showtime 2	320
SHOxBET	321
Showtime Extreme	322
Showtime Showcase	323
The Movie Channel (E)	327
The Movie Channel Xtra (E)	328
FLIX	333

## STARZ

Starz Encore (E)	340
Starz (E)	350
Starz (W)	351
Starz Edge	352
Starz Cinema	353
Starz Comedy	354
Starz In Black	355
Starz Kids & Family	356



EPiX Drive-In/MGM+ Drive-In	292
EPiX 1/MGM+	380
EPiX 2/MGM+ Marquee	381
EPiX Hits/MGM+ Hits	382

(EPiX becomes MGM+ starting 1/15)

## STARZENCORE

Starz Encore (W)	341
Starz Encore Westerns	342
Starz Encore Action	343
Starz Encore Suspense	344
Starz Encore Black	345
Starz Encore Classic	346
Starz Encore Family	347
MoviePlex	377

### News Pack

BBC World News	281
TheBlaze	212
Bloomberg Television	203
CNBC	208
FOX Business	206
FOX News Channel	205
MSNBC	209
Weather Channel	214

### Stars and Stripes Pack

American Heroes Channel	195
The Cowboy Channel	232
Crime & Investigation	249
Destination America	194
getTV	373
Reelz	299
Smithsonian Channel	367
Starz Encore Westerns	342

### Outdoor Pack

Outdoor Channel	396
Outside TV	390
Sportsman Channel	395
World Fishing Network	394

### DISH Movie Pack

Crime & Investigation	249
EPiX 1/MGM+	380
EPiX 2/MGM+ Marquee	381
EPiX Hits/MGM+ Hits	382
FXM	384
Hallmark Movies & Mysteries	187
HDNet Movies	130
IndiePlex	378
MoviePlex	377
PixL	388
RetroPlex	379
Sony Movie Channel	386
Starz Encore Suspense	344
Starz Kids & Family	356

### Kids Pack

Animal Planet	184
Baby TV	824
Boomerang	175
Disney Channel (E)	172
Disney Channel (W)	173
Disney Junior	168
Disney XD	174
Nick Jr.	169
Nicktoons	178

### National Action Pack

AXS TV	167
Crime & Investigation	249
ESPN	140
ESPN2	143
FOX Sports 1	150
Fuse	164
MotorTrend Network	246
TV Games Network	399
TVG2	398

### Regional Action Pack

Big Ten Network	405/410
FOX Sports 2	149
Longhorn Network	407
Outside TV	390
Pac-12 Network	406/409
Regional Sports	412
SEC Network	404/408
World Fishing Network	394

### Heartland Pack

Baby TV	824
The Cowboy Channel	232
Discovery Family	179
Game Show Network	116
Great American Living	248
Hallmark Channel	185
Hallmark Drama	186
Hallmark Movies & Mysteries	187
OWN	189
PixL	388
RFD-TV	231
UPTv	188

### Variety Pack

BET	124
Bravo	129
Crime & Investigation	249
Freeform	180
Investigation Discovery	192
LMN	109

### Latino Bonus Pack

beIN SPORTS en Español	873
Caracol TV	842
CBeebies	848
CNN en Español	859
Disney XD	174
ESPN Deportes	854
Estrella TV	852
FOROtv	847
FOX Deportes	855
Galavisión	833
Telemundo	835
TL Novelas	837
UniMas	830
Univision (E)	827
Univision (W)	828
Univision Deportes	856

Plus Many More

### International Packages

Arabic	Hindi
Bangla	Israeli
Bengali	Japanese
Brazilian	Kannada
Cantonese	Malayalam
Chinese	Marathi
Filipino	Polish
French	Portuguese
General	Punjabi
International & Cricket	Taiwanese
German	Tamil
Greek	Telugu
	Urdu

# ALPHABETICAL CHANNEL DIRECTORY

A&E	118
Adult Guard Lock Support Channel	480
Adult Programming	488-499
Adult Showcase	490/499
AMC	131
American Heroes Channel AHC	195
Animal Planet APL	184
AT&T SportsNet Pittsburgh	428
AT&T SportsNet Rocky Mountain	414
AXS TV	167
BabyFirstTV	823
BabyTV	824
BBC America BBCA	135
Beauty iQ	73
beIN SPORTS	392/871
beIN SPORTS en Español	873
Believers' Voice of Victory Network	265
BET	124
BET Her	251
Big Ten Network	410/405
TheBlaze	212
Bloomberg Television	203
Boomerang	175
BOUNCE	359
Bravo	129
BUZZR	245
BYUTV	9403
Cartoon Network (E)	176
Cartoon Network (W)	177
CBS Sports Network	158
CGTN Español	884
CGTNN	279
Christian Television Network	267
Cinemax MAX	307
CMT	166
CNBC	208
CNN	200
Comedy Central COM	107
Comet	289
Cooking Channel COOK	113
The Cowboy Channel	232
Cozi	253
Crime & Investigation CIHD	249
C-SPAN	210
C-SPAN2	211
Daystar	263
Destination America	194
Discovery Channel DISC	182

Discovery Family DFC	179
DISH Shopping	123/220/221
DISH Studio	102
Disney Channel (E) DISN-E	172
Disney Channel (W)	173
Disney Junior	168
Disney XD	174
DOGTV	285
El Entertainment Television	114
Enlace	9411
EPIX 1/MGM+	380
EPIX 2/MGM+ Marquee	381
EPIX Drive-In/MGM+ Drive-In	292
EPIX Hits/MGM+ Hits EPIXH / MGMHT	382
ESPN	140
ESPN2	143
ESPNEWS	142
ESPNU	141
EVINE Live	134
EWTN	261
Family Entertainment TV FETV	82
5 Star Max 5MAX	308
FLIX FLIX-E	333
FMC	387
Food Network FOOD	110
FOROtv	847
FOX Business	206
FOX News Channel FNC	205
FOX Sports 1 FS1	150
FOX Sports 2	149
Free Speech TV (FSTV)	9415
Freeform FREFM	180
Fuse	164
Fusion	244
FX	136
FXM	384
FXX	125
FYI	119
Galavision	273
Game Show Network GMSHW	116
Gem Shopping Network	229
getTV	373
Golf Channel GOLF	401
Great American Family	165
Great American Living	248
GRIT	217
Hallmark Channel HALL	185
Hallmark Drama HALLDR	186

Hallmark Movies & Mysteries HALLMV	187
HBO (E) HBO-E	310
HBO (W)	311
HBO 2 HBO2	312
HBO Family HBOF	315
HBO Latino	313
HBO Signature HBOS	314
HDNet Movies HDMOV	130
Heroes & Icons	293
HGTV	112
Hillsong Channel	258
History HIST	120
HLN	202
Hopper Insider	103
HSN	74
HSN2	226
IFC	133
In Country Television	230
IndiePlex	378
INSP	259
Investigation Discovery ID	192
ION	250
Jewelry Television	83/227
KTLA	233
KTV	264
KWGN	235
Laff TV LAFF	237
Lifetime LIFE	108
Link TV	9410
LMN	109
Logo	254
Longhorn Network	407
Magnolia Network MAGN	111
MeTV <sup>2</sup>	247
MLB Network	152
MLB Network Strike Zone	153
More Max MMAX	309
MotorTrend Network MOTOR	246
The Movie Channel (E) TMC	327
The Movie Channel (W) TMC-W	329
The Movie Channel Xtra (E)	328
MoviePlex	377
MSNBC	209
MTV	160
MTV Classic	163
MTV2	161
Nat Geo WILD NGWLD	190

National Geographic NATGEO	197
NBA TV	156
NBC Universo	838
NBC Sports Bay Area	419
NBC Sports Chicago	429
NBC Sports Mid-Atlantic	424
New England Sports Network	434
NewsNation	239
NFL Network	154
NFL RedZone	155
NHL Center Ice	475
NHL Network	157
Nick/Nick at Nite (E)	170
Nick/Nick at Nite (W)	171
Nick Jr.	169
Nicktoons	178
Olympic Channel	389
On Demand Guide	500
Outdoor Channel OUTD	396
OWN: Oprah Winfrey Network	189
Oxygen OXYG	127
Pac-12 Network	409/406
Paramount Network PARMT	241
Pop	117
QVC	137
RECTV	284
Reelz	299
RetroPlex	379
RFD-TV	231
Root Sports Northwest	426
Sale	225
Science SCI	193
SEC Network	408/404
Shepherd's Chapel Network	256
Shorts	375
Showtime (E) SHO-E	318
Showtime (W)	319
Showtime 2 (E) SHO2	320
SHOXBET SHOBET	321
Showtime Extreme SHOEX	322
Showtime Showcase (E) SHOS	323
Smithsonian Channel SMITH	367
Sony Movie Channel	386
Sportsman Channel	395
Starz (E) STARZ-E	350
Starz (W)	351
Starz Cinema (E) STRZCI	353



Starz Comedy STRZCO	354
Starz Edge STRZED	352
Starz In Black	355
Starz Kids & Family	356
Starz Encore (E) ENCR-E	340
Starz Encore (W) ENCR-W	341
Starz Encore Action EACTN	343
Starz Encore Black EBLACK	345
Starz Encore Classic ECLASS	346
Starz Encore Family EFAMILY	347
Starz Encore Suspense ESUSP	344
Starz Encore Westerns EWESTN	342
SundanceTV SUND-E	126
Syfy	122
TBN	260
TBS	139
TCM	132
TeenNick	181
Tennis Channel	400
3 Angels Broadcasting Network	9393
TLC	183
TNT	138
Travel Channel TRVL	196
truTV TRU	242
TV Land TVLND	106
TVG2	398
UniMas	271
Univision (E)	270
Univision (W)	828
Univision Deportes	397
UPtv UP	188
USA	105
V-ME	881
VH1	162
VICE	121
WE tv WE	128
The Weather Channel	214
World Fishing Network	394
WPIX	234
WSBK	236
WWOR	8105
Z Living	191

# NUMERICAL CHANNEL DIRECTORY

73	Beauty iQ	156	NBA TV	211	C-SPAN2	299	Reelz	389	Olympic Channel
74	HSN	157	NHL Network	212	TheBlaze	307	Cinemax MAX	392	beIN SPORTS
82	Family Entertainment TV FETV	158	CBS Sports Network	214	The Weather Channel	308	5 Star Max SMAX	394	World Fishing Network
83	Jewelry Television	160	MTV	217	GRIT	309	More Max MMAX	395	Sportsman Channel
102	DISH Studio	161	MTV2	220	DISH Shopping	310	HBO (E) HBO-E	396	Outdoor Channel OUTD
103	Hopper Insider	162	VH1	221	DISH Shopping	311	HBO (W)	397	Univision Deportes
105	USA	163	MTV Classic	225	Sale	312	HBO 2 HBO2	398	TVG2
106	TV Land TVLND	164	Fuse	226	HSN2	313	HBO Latino	400	Tennis Channel
107	Comedy Central COM	165	Great American Family	227	Jewelry Television	314	HBO Signature HBOS	401	Golf Channel GOLF
108	Lifetime LIFE	166	CMT	229	Gem Shopping Network	315	HBO Family HBOF	404	SEC Network
109	LMN	167	AXS TV	230	In Country Television	318	Showtime (E) SHO-E	405	Big Ten Network
110	Food Network FOOD	168	Disney Junior	231	RFD-TV	319	Showtime (W)	406	PAC-12 Network
111	Magnolia Network MAGN	169	Nick Jr.	232	The Cowboy Channel	320	Showtime 2 (E) SHO2	407	Longhorn Network
112	HGTV	170	Nick/Nick at Nite (E)	233	KTLA	321	SHOXBET SHOBTET	408	SEC Network
113	Cooking Channel COOK	171	Nick/Nick at Nite (W)	234	WPIX	322	Showtime Extreme SHOXB	409	Pac-12 Network
114	E! Entertainment Television	172	Disney Channel (E) DISN-E	235	KWGN	323	Showtime Showcase (E) SHOS	410	Big Ten Network
116	Game Show Network GMSHW	173	Disney Channel (W)	236	WSBK	327	The Movie Channel (E) TMC	414	AT&T SportsNet Rocky Mountain
117	Pop	174	Disney XD	237	Laff TV LAFF	328	The Movie Channel Xtra (E)	419	NBC Sports Bay Area
118	A&E	175	Boomerang	239	NewsNation	329	The Movie Channel (W)	424	NBC Sports Mid-Atlantic
119	FYI	176	Cartoon Network (E)	241	Paramount Network PARMT	333	FLIX FLIX-E	426	Root Sports Northwest
120	History HIST	177	Cartoon Network (W)	242	truTV TRU	340	Starz Encore (E) ENCR-E	428	AT&T SportsNet Pittsburgh
121	VICE	178	Nicktoons	244	Fusion	341	Starz Encore (W) ENCR-W	429	NBC Sports Chicago
122	Syfy	179	Discovery Family DFC	245	BUZZR	342	Starz Encore Westerns EWESTN	434	New England Sports Network
123	DISH Shopping	180	Freeform FREEM	246	MotorTrend Network MOTOR	343	Starz Encore Action EACTN	475	NHL Center Ice
124	BET	181	TeenNick	247	MeTV <sup>2</sup>	344	Starz Encore Suspense ESUSP	480	Adult Guard Lock Support Channel
125	FXX	182	Discovery Channel DISC	248	Great American Living	345	Starz Encore Black EBLACK	488-499	Adult Programming
126	SundanceTV SUNDE-E	183	TLC	249	Crime & Investigation CHD	346	Starz Encore Classic ECLASS	490/499	Adult Showcase
127	Oxygen OXYG	184	Animal Planet APL	250	ION	347	Starz Encore Family EFAMILY	500	On Demand Guide
128	WE tv WE	185	Hallmark Channel HALL	251	BET Her	350	Starz (E) STARZ-E	823	BabyFirstTV
129	Bravo	186	Hallmark Drama HALLDR	253	Cozi	351	Starz (W)	824	BabyTV
130	HDNet Movies HDMOV	187	Hallmark Movies & Mysteries HALLMV	254	Logo	352	Starz Edge STRZED	828	Univision (W)
131	AMC	188	UPtv UP	256	Shepherd's Chapel Network	353	Starz Cinema (E) STRZCI	838	NBC Universo
132	TCM	189	OWN: Oprah Winfrey Network	258	Hillsong Channel	354	Starz Comedy STRZCO	847	FOROtv
133	IFC	190	Nat Geo WILD NGWLD	259	INSP	355	Starz In Black	873	beIN SPORTS en Español
134	EVINE Live	191	Z Living	260	TBN	356	Starz Kids & Family	881	V-ME
135	BBC America BBCA	192	Investigation Discovery ID	261	EWTN	359	BOUNCE	884	CGTNN Español
136	FX	193	Science SCI	263	Daystar	367	Smithsonian Channel SMITH	8105	WWOR
137	QVC	194	Destination America	264	KTV	373	getTV	9393	3 Angels Broadcasting Network
138	TNT	195	American Heroes Channel AHC	265	Believers' Voice of Victory Network	375	Shorts	9403	BYUTV
139	TBS	196	Travel Channel TRVL	267	Christian Television Network	377	MoviePlex	9410	Link TV
140	ESPN	197	National Geographic NATGEO	270	Univision (E)	378	IndiePlex	9411	Enlace
141	ESPNU	200	CNN	271	UniMas	379	RetroPlex	9415	Free Speech TV (FSTV)
142	ESPNEWS	202	HLN	273	Galavision	380	EPIX 1/MGM+		
143	ESPN2	203	Bloomberg Television	279	CGTNN	381	EPIX 2/MGM+ Marquee		
149	FOX Sports 2	205	FOX News Channel FNC	284	RECTV	382	EPIX Hits/MGM+ Hits EPIXH/MGMHT		
150	FOX Sports 1 FS1	206	FOX Business	285	DOGTV	384	FXM		
152	MLB Network	208	CNBC	289	Comet	386	Sony Movie Channel		
153	MLB Network Strike Zone	209	MSNBC	292	EPIX Drive-In/ MGM+ Drive-In	387	FMC		
154	NFL Network	210	C-SPAN	293	Heroes & Icons				

**SUDOKU CHALLENGE** By Linda Thistle

Difficulty This Month: ★ ★

**DIRECTIONS**

Place a number in the empty boxes in such a way that each row across, each column down and each small 9-box square contains all of the numbers from one to nine.

- ★ Moderate
- ★★ Challenging
- ★★★ HOO BOY!

	2				8		5	
8			6					3
		7		9		6		
9			5		3		7	
		1		7				8
	5		2				1	
		4	3					7
	8			6		4		
5					2		1	

© 2023 King Features Synd., Inc.

**WORD FIND** By Candice Sullivan

**IN THIS ISSUE**

(words to find in Bold)

**Accused**

**Alert**

America's Got Talent:  
**All-Stars**

**Dionne Warwick**: Don't  
Make Me Over

**Frozen** Planet II

Reba McEntire's The  
**Hammer**

How to Murder Your  
**Husband**

**Lingo**

**Special Forces**:  
World's Toughest Test

W	H	A	M	M	E	R	E	A	D	K
D	I	O	N	N	E	M	S	C	V	V
E	R	L	Z	W	O	R	T	C	L	Q
L	H	I	L	H	A	R	M	U	W	F
I	I	U	Y	T	E	L	F	S	I	R
N	K	A	S	L	R	H	N	E	T	O
G	W	L	A	B	C	E	K	D	C	Z
O	L	W	R	T	A	Y	N	Y	H	E
A	W	G	A	Z	I	N	P	T	E	N
U	J	W	E	T	W	N	D	O	S	S
S	P	E	C	I	A	L	N	K	S	H

The **Watchful Eye**

The **Way Home**

**Will Trent**

Anne Rice's Mayfair  
**Witches**

**BOTH DIRECTIONS** By Julie K. Cohen

**DIRECTIONS**

Unscramble the letters to the right to form words. The words you unscramble will appear both across and down. We've given you clues to get you started.

**UNKS**  
**KATE**  
**AAQU**  
**VATS**

	<b>A</b>		
<b>A</b>			

**ACROSS**

- 1 Blamed for a crime, also new crime anthology series on FOX
- 5 She guest-stars in 1 Across, Abigail \_\_\_\_\_
- 9 *L.A. Law* scene
- 11 What Hoots is, on Sesame Street
- 13 Romantic flowers given away on *The Bachelor*
- 15 Writing fluid
- 16 *Apollo 13* org.
- 17 Flawed car
- 18 Actress Naomi, star in *Mulholland Drive*
- 20 Low USN rank
- 21 Postseason college football game
- 23 Lead actor in *9-1-1: Lone Star*, Rob \_\_\_\_\_
- 25 Trillion, prefix
- 26 Very angry
- 27 Brown, Penn or Harvard
- 29 *Your Honor* star, \_\_\_\_\_ Cranston
- 31 *Better Call \_\_\_\_\_* starring Bob Odenkirk
- 33 Internet address type
- 34 Existed
- 35 \_\_\_\_\_ *Name That Tune* on FOX (hosted by Jane Krakowski)
- 36 Spider-Man alter ego, \_\_\_\_\_ Parker
- 37 Savings account
- 38 \_\_\_\_\_: *Valhalla* returns on Netflix; seafaring people
- 41 Moving to and \_\_\_\_\_
- 42 Sodium symbol
- 43 Main activity of the PBS series *Finding Your Roots With Henry Louis Gates Jr.*
- 44 Watering spot in the desert

**DOWN**

- 1 Popular PBS show where many appraisals are given, \_\_\_\_\_ *Roadshow*
- 2 *The Shield* star, now starring in 1 Across, Michael \_\_\_\_\_
- 3 1692 trials locale
- 4 Music documentary biopic \_\_\_\_\_: *Don't Make Me Over* on CNN (2 words)
- 5 *The OC* star who is part of the cast of 1 Across, Rachel \_\_\_\_\_
- 6 Go astray
- 7 Guitarist, \_\_\_\_\_ Paul
- 8 Bird homes
- 10 Nurse (abbr.)
- 12 Apple state (abbr.)
- 14 \_\_\_\_\_ whim (2 words)
- 18 Golf club
- 19 Series from HBO based on a video game (4 words)
- 21 Hamlet verb
- 22 Venus or Mars, for example
- 23 Highway division
- 24 Really funny
- 25 Sort
- 26 *Cross Creek* star, \_\_\_\_\_ Steenburgen
- 28 Bad guy
- 30 Up to this point
- 32 Role playing
- 36 Basil sauce
- 38 Through
- 39 Like Beethoven's minuet (2 words)
- 40 Negative vote



# WWE ROYAL RUMBLE

SAN ANTONIO SATURDAY • JANUARY 28

**LIVE!** Saturday, Jan. 28 at 8pm (ET)

Standard Definition: \$44.99 • Channel 462    High Definition: \$44.99 • Channel 460

Event subject to availability on DISH. Programming and fight card subject to change without notice.



Order now: Call 1-877-DISH PPV (347-4778) or online at [mydish.com/wwe](http://mydish.com/wwe)

© 2023 All rights reserved. All hours and times subject to change.

## Need Your Magazine Earlier?

# SIGN UP FOR OUR DIGITAL ISSUE!

As a subscriber to *OnDISH Magazine*, you can get a **FREE EXPANDED DIGITAL ISSUE!**



- **Easy-to-read expanded 24-hour TV listings** (zoom in as close as you want)
- **Delivery (via email)** up to a week before the end of the month!
- **Search** movies, sports and specials content

### HOW TO GET YOUR DIGITAL ISSUE:

1. Go to [ondishmag.com/all-access/](https://ondishmag.com/all-access/)
2. Enter your name, address and email (to verify you are an existing subscriber)
3. Enjoy! Every month, we'll email you a special link to download your free expanded digital edition of *OnDISH Magazine*.