

RAY DONOVAN IS BACK IN NEW MOVIE!

January 2022 \$7.99

# ON DISH

TUNED IN TO YOU™

THE TOP

24

BEST SHOWS  
TO RING IN THE  
NEW YEAR

## MAGNOLIA NETWORK

Chip & Joanna Gaines  
Launch Their  
New Network

## THE GILDED AGE

New Period Drama  
From "Downton Abbey"  
Creator Comes To HBO

## SECRETS OF PLAYBOY

Élodie Yung in  
*The Cleaning Lady*

## Returning Favorites:

The Amazing Race  
Snowpiercer  
This Is Us  
Ozark  
& More!



# ENJOY A TV FLASHBACK You Pick The Theme!



TV Duos



Game Shows



Favorite TV Families



Crime Shows



TV Doctors



'80s Comedy Classics



Music Shows



Scary TV



Classic TV Shows



Holiday Favorites



TV Moms



Masterpiece



'70s TV Dramas



Westerns



Talk Shows

**Order NOW!**

**\$7.99 per issue  
(FREE SHIPPING!)**

While quantities last. Subscriptions also available. Sales tax charged where applicable. Free shipping in U.S. only.

**CALL 855-887-6013**

**OR GO TO**

**TVPUZZLER.COM/BACKISSUES**



# 14

Meryl Streep's youngest daughter (Louisa Jacobson, left) makes her series debut in *The Gilded Age*, which follows the titans of 1880s New York. Old money versus new money drama!

## ON THE COVER

- 12 Magnolia Network Launch
- 14 *The Gilded Age*
- 16 Ray Donovan: The Movie
- 17 Secrets Of Playboy
- 24 Snowpiercer
- 25 The Amazing Race
- 25 This Is Us
- 25 Ozark

## IN EVERY ISSUE

- 5 DISH Chatter
- 8 DISH Free Preview
- 32 DISH On Demand
- 220 Channel Directories
- 226 Puzzle Page

## FIND WHAT YOU WANT TO WATCH

- 28 **New To Netflix**
- 30 DISH On Demand Calendar
- 36 Premium Profiler
- 38 Movie Listings
- 83 Specials
- 88 Sports
- 94 Series Source
- 96 Daily Programming Listings

## 14 Top 24

It couldn't get any simpler. Get the quick rundown on what's new, what's returning and just what to watch this month.

## 17 Women Of The Movement

Learn the story of Mamie Till-Mobley, who in 1955 risks her life to find justice after her son is brutally murdered in the Jim Crow South.

## Next Month

The 2022 Winter Olympics take us to Beijing from Feb. 4-20. Plus, *Jeopardy!* *National College Championship* and more.

On The Cover: The Cleaning Lady: © 2021 Fox Media LLC. Credit: Ursula Coyote/FOX. The Gilded Age: Credit: Alison Cohen Ross.

Get Your Magazine Early!

**FREE DIGITAL ISSUE**

Go to: [ondishmag.com/all-access/](http://ondishmag.com/all-access/)

**To Order OnDISH Magazine or contact DISH**

For 24-hour customer service visit [mydish.com/chat](http://mydish.com/chat) or call **1-800-333-DISH (3474)**



## OnDISH MAGAZINE'S READER REWARDS

One lucky reader will win the Disney+ *Welcome to Earth* photo book and *National Geographic* special issue.

Rules are simple: No purchase necessary to enter or win. Complete and mail form by Jan. 27, 2022. One form per envelope. See official rules at [ondishmag.com/rules](http://ondishmag.com/rules)



Name: \_\_\_\_\_

Address: \_\_\_\_\_ City: \_\_\_\_\_

State: \_\_\_\_\_ Zip: \_\_\_\_\_ Phone: \_\_\_\_\_

Mail this entry to: OnDISH Magazine January Reader Rewards, 9275 N. 49th Street, Suite 100, Brown Deer, WI 53223



## EDITOR'S NOTE

### A Big Year Ahead!

A new year, a new lineup and lots of entertainment to brighten your days are ahead. Clearly, we all should give a shout-out of thanks to the networks and streaming services that

delivered over 300 new series this past year, despite all the pandemic challenges. For many of us, our TV was our sole form of entertainment as we continued to hunker down in our homes. It's honestly amazing that we kick off the year with the quality and volume of new series and seasons that we have this month.

Let's all channel some positivity as we look to the year ahead and do our best to spread peace, kindness and empathy to those we encounter. As always, we look forward to helping you find what's new and what's good to watch on TV in 2022! Happy New Year!

## UPDATES!!!

- DIY Network officially changes to Magnolia Network on Jan. 5 at 7pmET (see page 12). Please note that your daily TV listings have been updated to reflect this.
- NBC Sports Network (NBCSN) officially goes dark on Dec. 31 and has been removed from the publication (see page 26).
- The USPS continues to struggle with mail delivery. We have moved our print dates back in 2022 to help, so please be patient.

Happy viewing!

*Barb Oates*

Barb Oates, Editor in Chief



Editor in Chief: **Barb Oates**  
Director of Editorial: **Jeff Pfeiffer**

**ART & PRODUCTION**  
Executive Art Director: **Tom Czisny**  
Graphic Artist: **Rachael Engleman**

**COPY**  
Copy Chief: **Jill Klitz**  
Copy Editor: **Katie Kuenkler**  
**VP OF ENTERTAINMENT ADVERTISING**  
**Tom Comi** [tcomi@ntvbmedia.com](mailto:tcomi@ntvbmedia.com)

**BUSINESS**  
Publisher: **Andrew DeAngelis**

## CONTACT US

To contact the publishers of OnDISH Magazine:

**email:** [dishletters@ntvbmedia.com](mailto:dishletters@ntvbmedia.com)

**write:** OnDISH Magazine,  
9275 N. 49th St., Suite 100,  
Brown Deer, WI 53223

**call:** 1-888-333-5388\*

**web:** [ondishmag.com](http://ondishmag.com)

**twitter:** @OnDISHMag

\*Please Note: We are not DISH.

To report a change in address, cancel your magazine or to change any DISH services you need to contact DISH at [mydish.com](http://mydish.com) or call 1-800-333-DISH (3474).

OnDISH Magazine (USPS 015-347) (ISSN 2334-4423) Volume 26, Issue 11, is published monthly by NTVB Custom Media, LLC, 9275 N. 49th St., Suite 100, Brown Deer, WI 53223-1495. Subscription rate: 1 year \$60.00. The goal of NTVB Custom Media, LLC is to deliver your publication by the 1st of each month. If you are experiencing delivery delays, or your publication arrives damaged, please contact the U.S. Postal Service at your area post office. You can also log on to [ondishmag.com/delivery](http://ondishmag.com/delivery). Periodicals Postage Rates Paid at Milwaukee, WI and additional mailing offices.

**POSTMASTER:** Send address changes to OnDISH Magazine, 9275 N. 49th St., Suite 100, Brown Deer, WI 53223-1495. For questions or comments about this magazine, contact us at [dishletters@ntvbmedia.com](mailto:dishletters@ntvbmedia.com) or NTVB Custom Media, LLC, Attention: Editor, 9275 N. 49th St., Suite 100, Brown Deer, WI 53223-1495. NTVB Custom Media, LLC is not responsible for changes in programming times and dates. OnDISH MAGAZINE is a publication of NTVB Custom Media, LLC. All Rights Reserved. Reproduction in any form without written permission from the publisher is prohibited. © 2022 NTVB Custom Media, LLC. If you are moving to a new address, please visit your local Post Office and complete USPS Form 3575, or access the web at [moversguide.usps.com](http://moversguide.usps.com)

## MEET THE CREW



### BARB

**First on my list to watch:** *The Gilded Age* on HBO

**Surprised how much I adored:** *Single Drunk Female* on Freeform

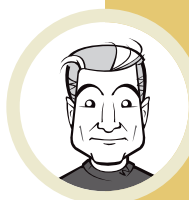
**Thankful fans will get closure:** *Ray Donovan: The Movie* on Showtime



### JEFF

**First on my list to watch:** *Around the World in 80 Days* on PBS

**Classic movie to discover (or rediscover) this month:** *A Face in the Crowd* (1957) (Jan. 1 on TCM)



### RYAN

**First on my list to watch:** *Search Party* series finale on HBO Max

**Huh?:** *Judge Steve Harvey* on ABC

**Why?:** *Joe Millionaire: For Richer or Poorer* on FOX



### TAYLOR

**First on my list to watch:** *Next Level Chef* on FOX

**For fans of Nashville:** *Monarch* on FOX

**Looks promising:** *The Cleaning Lady* on FOX



### PAUL

**First DISH On Demand movie to watch:** *Ron's Gone Wrong*

**Awards watch:** *Critics' Choice Awards* on The CW and TBS

## DISH CHATTER

### ■ Where Have I Seen "Ghosts" Before?

I've been hearing about the "new" TV show *Ghosts*. I remember a show titled *Topper* many years ago with the same idea. Mr. Topper and his wife were in a house (they were middle-aged), and Topper (Leo G. Carroll) was the only one who could see the ghosts of a young married couple. It was an enjoyable show. Am I correct: Did this show exist? *Topper* was never mentioned when the new show *Ghosts* started (although *Topper* only had two ghosts, not the variety of the present show). — Doreen

*Your memory is fine. "Ghosts," which itself is adapted from a British series, is the latest in a long line of comedies involving spirits not everyone can see. "Topper," which aired on CBS from 1953-55, was based on a novel and a series of 1930s movies, originally starring Cary Grant as one of the ghosts. (A very short-lived 1989 remake on NBC, titled "Nearly Departed," starred Monty Python's Eric Idle.) The device was used in Noël Coward's classic "Blithe Spirit" on stage and screen, and I remember a similar premise in the more romantic 1968-70 sitcom "The Ghost & Mrs. Muir." There are doubtless others. So while the idea may not be new, it is durable. We are thrilled that CBS gave "Ghosts" (with "iZombie's" Rose McIver and Utkarsh Ambudkar as the owners of the haunted house) an early full-season renewal. It's a keeper.*

### ■ Cable Movies In Movie Section?

Will you please stop putting made-for-TV films in the movie section? These are not real films. Now if Hallmark, Up or Lifetime premiere a movie then list it, but putting all of the made-for-TV movies in the index is taking room that could be used for real movies. Every movie released in a theater should be in the movie index. TCM is the only non-premium channel that plays movies



without commercials, yet there are several TCM movies missing every month. Also, remove the Letterbox icon from the index. — Jerome

*Wow, that's a loaded request. We try to list all movies — network originals, theatricals, premieres, classics — in the movie description section to serve everyone's interests. For example, you may not care about all of these network original films, but many others do and want to know what the film is about, who stars in it, and air dates and times. If you don't find a description for a TCM movie, chances are we hand-cut that movie title into the daily programming listings at the last minute due to a network update. Appreciate you writing — we're sending you a free copy of our sister publication "ReMIND."*

### ■ Why Only Air A Movie Once?

Perhaps you can shed some insight on why some brand-new movies only play once — *The Prodigy* (2019) on AMC and *The Curse of La Llorona* (2019) on TNT. Instead, the networks would rather bore us to death with endless hours of *A Nightmare on Elm Street* and *Friday the 13th* movies, which are all great, but these films get played dozens of times weekly. — Mark

*Cable networks will air reliable classics from the 1980s and 1990s, as they know these films deliver viewers. They also position popular movies in front of original content to help boost ratings. FX is probably the best network when it comes to locking up the TV rights*

*for newer films. When it comes to purchasing movie rights, there are all sorts of restrictions that go into that, including the number of airings, wait time until a cable network can first air the title, number of networks that can purchase the title during a select time frame, etc. As for the specifically mentioned titles, we assume the networks only had rights to air the title once. We did reach out to both networks but neither provided rationale, but we will continue to pursue an answer if they will re-air. We're sending you a free copy of our sister publication "ReMIND," too.*

### ■ Congratulations!

Our November Reader Rewards winner of Tacoma FD (truTV) survival essentials was Linda Culbreath.

### ■ Delivery/ Replacement Policy

We mail each issue of your magazine in enough time for it to arrive by the first of the month according to what is required by the United States Postal Service standards for delivery. If your magazine does not arrive in the first few days of the month, you must contact us within 15 days (i.e., by Jan. 15) to request a replacement copy. Email us at [dishletters@ntvbmedia.com](mailto:dishletters@ntvbmedia.com) (include your name and address), call 1-888-333-5388, or write us at OnDISH Magazine, 9275 N. 49th St., Suite 100, Brown Deer, WI 53223.



## What's Your Jam?

If you like the often wacky but always entertaining games Jimmy Fallon plays on *The Tonight Show*, you'll love *That's My Jam* (Mondays beginning Jan. 3 on NBC), a new show inspired by those popular games. In this iteration, two teams of two celebrities go against each other for the charity of their choice in a series of music, dance and trivia-based games. You'll see plenty of NBC familiars from Blake Shelton and Ariana Grande teaming up against Kelly Clarkson and John Legend to Terry Crews, Anthony Anderson and a slew of others. The series is hosted by Fallon and promises an array of crazy games like "Air Guitar," "Wheel of Impossible Karaoke," "The Vinyl Countdown" and "Slay It, Don't Spray It." Could you name artists who have an animal in their name? (The Beatles, Snoop Dogg) Or artists with names that sound like things in your house? (The Doors, MC Hammer) We think Shelton said it best when he rattled off something like, "Really, this is what it's come to — this show is on TV!" Yes, Blake, it is, and we couldn't be happier.

## Gordon Ramsay Takes It To A New Level

Superchef Gordon Ramsay returns to FOX with a brand-new cooking competition that will reach new heights — three stories, to be exact. *Next Level Chef* (premiering Sunday, Jan. 2, and then airing Wednesdays) is set on a stage with three distinct floors, each bringing different ingredients and a different environment for the 15 contestants to cook in. Joining Ramsay as co-mentors are star chefs Nyeshia Arrington and Richard Blais, who will each guide a group of the chefs as they ascend through the culinary gauntlet. The participants range from line cooks to food truck owners and home chefs to social media influencers, all vying for a \$250,000 grand prize.

## If You LIKE...TRY

Remember when word of mouth and water-cooler talk were how you discovered new TV shows, good restaurants and your next great read? Now we've got recommendation engines matching us up to what to watch next. Here we keep it simple.





## RETURNING FAVORITES

**All Creatures Great and Small**  
PBS (Jan. 9)

**The Amazing Race** CBS (Jan. 5)

**American Dad** TBS (Jan. 24)

**American Greed** CNBC (Jan. 5)

**American Masters** PBS (Jan. 11)

**The Bachelor** ABC (Jan. 3)

**Billions** Showtime (Jan. 23)

**black-ish** ABC (Jan. 4)

**Call Me Kat** FOX (Jan. 9)

**Darcey & Stacey** TLC (Jan. 10)

**Dirty Jobs** Discovery Channel  
(Jan. 2)

**Euphoria** HBO (Jan. 9)

**Fast Foodies** truTV (Jan. 27)

**Finding Your Roots** PBS (Jan. 4)

**Full Frontal With Samantha  
Bee** TBS (Jan. 20)

**Go-Big Show** TBS (Jan. 6)

**Growing Up Hip Hop** WE tv  
(Jan. 6)

**I Can See Your Voice** FOX  
(Jan. 5)

**Kenan** NBC (Jan. 3)

**Married at First Sight** Lifetime  
(Jan. 5)

**9-1-1: Lone Star** FOX (Jan. 3)

**Ozark** Netflix (Jan. 21)

**Real Time With Bill Maher**  
HBO (Jan. 21)

**Resident Alien** Syfy (Jan. 26)

**The Righteous Gemstones**  
HBO (Jan. 9)

**RuPaul's Drag Race** VH1 (Jan. 7)

**Snowpiercer** TNT (Jan. 24)

**Superman & Lois** The CW  
(Jan. 11)

**This Is Us** NBC (Jan. 4)

**Two Sentence Horror Stories**  
The CW (Jan. 16)

**Undercover** Netflix (Jan. 10)

**Undercover Boss** CBS (Jan. 7)

**Worst Cooks in America**  
Food Network (Jan. 5)



La Brea



## RECENTLY RENEWED

If you've been fantasizing about a second season of FOX's **Fantasy Island** reboot, the network has fulfilled that — last summer's No. 1 new scripted program among adults 18-49 will be back. ... Meanwhile, the No. 1 new scripted program among adults 18-49 last fall, NBC's **La Brea**, will also be back for Season 2. ...

House-flipping twins Jonathan and Drew Scott, better known as HGTV's *Property Brothers*, will battle it out again in an eighth season of their spinoff series **Brother vs. Brother**. Drew bested Jonathan in Season 7, and the new season, slated to air this summer, will find the two back in Los Angeles. ... Daniel Radcliffe and Steve Buscemi are returning for Season 4 of TBS' anthology comedy series **Miracle Workers**, which was cable's No. 1 sitcom of 2021. ... Another popular comedy, truTV's **Tacoma FD**, has also been renewed for a fourth season. ... TLC has renewed a few of its hit family- and relationship-themed reality series: **Extreme Sisters** (Season 2), **I Love a Mama's Boy** (Season 3) and **Smothered** (Season 4). ... **Crime Scene** (Seasons 3, 4 and 5) returns on Netflix.

## YANKED!: Recently Canceled Shows

Maybe now Harry Ambrose (Bill Pullman) will find some peace. Crime thriller **The Sinner** will sin no more for USA Network after its fourth season ended in December. ... Ava DuVernay's OWN drama **Queen Sugar** will have a sweet sendoff with a seventh and final season coming later this year. "I feel strongly that the story, which began as

a sunrise of a suggestion from Oprah, is ready for its sunset as a dream fully realized," DuVernay says. ... The market for haunted houses has cooled. Syfy will take a loss on drama **SurrealEstate** after one season of 10 episodes. ... Ice-skating drama **Zero Chill** has zero chance of getting a second season on Netflix.



# FREE Preview

Enjoy a Free Preview from the following networks

Dec. 27 - 31



Channels 310-315  
HBO Package



Channels 307-309  
Cinemax Package

Jan. 1 - 7



Channels 5330-5395  
Channel 475  
NHL Center Ice Package

Jan. 1 - 31



Channel 188  
Heartland Package,  
AT200

Jan. 14 - 21



Channels 5000-5031  
Channel 470  
NBA League Pass Package

## UPGRADE TODAY:

If you want to get these great channels and more, it's easy to upgrade! Log in to your account on [mydish.com](http://mydish.com) and click on My Programming to upgrade your package.



Download the MyDISH app from Google Play or Apple App Store, log in with your MyDISH account credentials, then select "Manage TV" from the homescreen

Some channels available in HD. HD channels require HD television and HD receiver to view in high definition. Fee may apply to upgrade.

**dish**  
Tuned In To You.

## TUNED IN TO YOU

### Make It A Binge-Watch

You Don't Need A Streaming Service To Binge-Watch A Series.

Everyone's always buzzing about the next series to "binge-watch," a traditional phrase TV viewers use that basically means you are watching back-to-back-to-back episodes, and then some, of a particular TV show. With DISH, after watching a recording from your latest obsession, you'll have the option to watch one of the next or previous episodes of the same program when available in your recordings, Subscription On Demand content or if watching on Netflix.

When watching On Demand content, if the next episode in the series is available, your Hopper will automatically prepare that episode to play next. If you don't want to go to the next episode just yet, you can select Cancel.



### Quick Tips To Binge

1. To access Free On Demand content, say "On Demand" into your Voice Remote or tune to Channel 300 to access thousands of On Demand movies and shows. You can also go to Menu > On Demand and select the title or network you wish to access.
2. Once in the On Demand menu, browse through a category that interests you. Some of the more popular are Shows Recommended For You and Most Watched TV Shows. Or just search to find the program you are looking to binge.
3. Let's use the delightful new series *Ghosts* for an example. You can start with Episode 1 and catch up to the latest episode that has aired. If you are looking for a longer binge, History's *The Curse of Oak Island* has the last nine seasons available On Demand. Other networks vary in how far back you can access episodes. Paramount Network makes only Season 4 episodes of *Yellowstone* available via On Demand.
4. You can also record series and save to binge-watch later.

Check out features of your Hopper, Joey or Wally by visiting [youtube.com/user/dish](https://youtube.com/user/dish) or [mydish.com/support](http://mydish.com/support).



# DISH SPORTS PACKAGES

**HALF SEASON OFFER!**  
**FREE PREVIEW JAN. 14-21**



# NBA League Pass

Watch the most NBA Basketball with the NBA LEAGUE PASS or NBA TEAM PASS packages on DISH. NBA LEAGUE PASS and NBA TEAM PASS are regular season packages that provide subscribers with games from outside their local viewing area. Are you in one city while your favorite team or player is in another? Or are you a Super Fan who wants to watch the best game of the night? Then don't miss a minute of live NBA action – get NBA LEAGUE PASS or NBA TEAM PASS today!

**HALF SEASON OFFER!** Order NBA LEAGUE PASS for only \$99 or 4 payments of \$24.75

**HALF SEASON OFFER!** Order NBA TEAM PASS for only \$59

To order call 1-800-333-DISH (3474) Or visit [mydish.com/NBA](http://mydish.com/NBA)

NBA Regular Season, out-of-market games only. NBA LEAGUE PASS automatically continues at a special renewal rate each year unless you call to cancel prior to the start of the season, provided DISH carries this service. All prices, fees, charges, packages and programming subject to change without notice. The package is nonrefundable, nonproratable and nontransferable once the season begins. Restrictions apply to compatible DISH antennas and receivers. May not be available in Alaska, Hawaii, Puerto Rico, or USVI. Games subject to local blackout. Games in high definition require HD receiver; fee may apply to upgrade. Subscriptions subject to applicable sales tax. Commercial locations require an appropriate license agreement. Blackouts and other restrictions apply. © 2022 DISH Network L.L.C. All rights reserved. NBA, the NBA logo and team identifications are the exclusive intellectual property of NBA Properties, Inc. and the respective member teams. © 2022 NBA Properties, Inc. All Rights Reserved. © 2021 NBAE. Credit: Nathaniel S. Butler/NBAE via Getty Images.

**HALF SEASON OFFER!**  
**FREE PREVIEW JAN. 1-7**



Watch the most NHL Hockey with the NHL CENTER ICE package on DISH. NHL CENTER ICE is a regular season package that provides subscribers with games from outside their local viewing area. Follow your favorite teams and players all season long, even if you don't live in the same city as them.

**HALF SEASON OFFER!** Order NHL Center Ice for only \$40

To order call 1-877-DISH PPV (347-4778) or visit [mydish.com/NHL](http://mydish.com/NHL)

NHL Center Ice automatically continues at a special renewal rate each year unless you call to cancel prior to the start of the season, provided DISH carries this service. All prices, fees, charges, packages and programming subject to change without notice. The package is nonrefundable, nonproratable and nontransferable once the season begins. Restrictions apply to compatible DISH antennas and receivers. May not be available in Alaska, Hawaii, Puerto Rico, or USVI. Games subject to local blackout. Games in high definition require HD receiver; fee may apply to upgrade. Subscriptions subject to applicable sales tax. Commercial locations require an appropriate license agreement. Blackouts and other restrictions apply. © 2022 DISH Network L.L.C. All rights reserved. NHL, the NHL Shield and Center Ice name and logo are registered trademarks and The Game Lives Where You Do and NHL Network are trademarks of the National Hockey League. NHL and NHL team marks are the property of the NHL and its teams. © NHL 2021. All Rights Reserved.



To Order Call **1-866-794-5262**  
or visit [mydish.com/sports](http://mydish.com/sports)

# 5 QUESTIONS

## WITH WILL ESTES OF CBS' "BLUE BLOODS"

By Jacqueline Cutler

After Will Estes' first season in the NYPD uniform for *Blue Bloods*, he used the summer hiatus from the popular CBS Friday night drama to outfit his Los Angeles home with solar panels.

Nearly 12 years later, he's completed the switch to solar at his houses in Los Angeles and New York, and drives an electric car. As he's learned more about being a steward of the planet, Estes has also been learning from some of the best in show business.

Playing Jamie, the youngest member of the Reagan NYPD dynasty, Estes works with TV and Broadway legends. His character's father (Tom Selleck) is the police commissioner, and his grandfather (Len Cariou) retired from that job. His brother (Donnie Wahlberg) is a hotheaded detective, and his sister (Bridget Moynahan)

is an assistant district attorney.

"I really feel blessed that I am surrounded by some greats," Estes says. "Donnie is at Mach 5, and he operates so quickly — he is the engine of the show, and you better keep up."

As for the show's lead, Selleck, Estes says, "I have just learned tricks of the trade from Tom inside and out. He does not want to do a lot of takes, and we don't need to cover it for days. It is because they are professionals."

If Estes has his wish, *Blue Bloods* will run "till the end of days. I don't think anybody expected 12 seasons in the beginning. But here we are, and I think this season we have made great episodes. I think there are stories to be told as long as the powers that be on this show keep doing it."

Here Estes answers our 5 Questions:

### 1 Do you eat the food in the Sunday dinner featured on each episode?

I eat some of it, as much as I can. If I go to the starch and meat, I would be under the table.

### 2 Tell us about a time you were starstruck.

It's happened a few times. One was Tom Selleck. When he walks into a room, everyone notices. He is and has the presence of a movie star. We also had the really incredible day we had a producer come in and say we are going to stop shooting family dinner. This was a few years ago. [The producer told us,] "You can take pictures when they are here. All we ask is you don't post anything until 20 to 30 minutes after they leave." And we are sitting around the family dinner and in walks Bill Clinton. He is a huge fan of the show. He put his hand on my shoulder and said how some of his favorite scenes were between my character and Tom's. He is one of the most magnetic people I have ever met. Everyone wanted to hear what he would say.

### 3 What three foods do you keep in stock?

Cultured vegetables, avocado and eggs.

### 4 What three shows did you watch when you were a kid?

*Star Trek: The Next Generation*, *The Simpsons* and I used to stay up late and watch Johnny Carson.

### 5 What categories would you run on *Jeopardy!*?

I was on *Celebrity Jeopardy!* with Linda Park and Brad Paisley. I was just good at pushing the button. My family was blown away that I won. Let's get one thing straight — Brad was definitely beating me, but he didn't bet all of his money, and I think he got more right than I did. Movies from the '80s and '90s would be my easiest category. Food. I am into health foods, so anything culinary I might be able to pull out. I grew up in L.A., so anything related to Angeleno culture.



## Reconnect with your past!

Remember the shows, movies and music you grew up with? Relive those happier, simpler times with the stars you loved.

### Retro TV Listings

Rediscover your favorite shows from television's golden era

### Puzzles & Brainteasers

Give your mind a workout and be entertained with word finds, crosswords, trivia and more

### Time Capsules

When was gas 59 cents a gallon?

### Where Are They Now?

What ever happened to those forgotten stars from the past? We track them down.

*The Past Is a Blast!*  
**Order Today**



✓ **Yes! Start my order for 1 year (12 issues) for only \$1.25 per issue**

1-Yr Cover Price: **\$59.88**

Your Price: **\$15**

You Save **75%**

Cut out this coupon and mail to:

**ReMIND Magazine**  
**213 Park Drive**  
**Troy, MI 48083**

Name (please print) .....

Address .....

City ..... State ..... Zip .....

Email ..... Telephone .....

☐ Payment enclosed (payable to ReMIND Magazine) ☐ Bill me later

Charge my Card: ☐ Visa ☐ MasterCard ☐ AMEX ☐ Discover

Card# ..... Exp. .... / .....

Offer For New Subscribers Only.

Sales tax charged where applicable

Allow 4-6 weeks for delivery of your first issue. All subscriptions are delivered via U.S. Mail.

**RMCG15**

**Only**  
**\$1.25**  
**a month!**

**NEW**  
**THEME**  
**FOR EVERY**  
**ISSUE**

**12 issues**  
**for only \$15!**

RMCG15



**remindmagazine.com/channel**



**1-844-390-3163 (Mention offer code CHANNEL)**

# MAGNOLIA NETWORK IS HERE!

Chip And Joanna Gaines, The “Fixer Upper” Superstars, Expand Their Empire. By Jeff Pfeiffer

Magnolia Network, the home-and-lifestyle channel that is a joint media venture between Discovery and *Fixer Upper* stars Chip and Joanna Gaines, has been streaming programming on discovery+ since last July. Now, the wait for that content’s arrival on traditional TV is finally over: Effective Wednesday, Jan. 5, at 7pmET, the existing DIY Network will officially rebrand to Magnolia Network (on Channel 111), kicking its programming off with the linear premiere of the Gaineses’ newest series, *Fixer Upper: Welcome Home*.

“It is our ongoing desire to create a space, whether in a streaming environment or on linear television, where people who watch a show on our network leave feeling like it was time well spent,” the Gaineses say.

Viewers who currently receive DIY Network as part of their programming lineup will automatically have access to Magnolia Network starting Jan. 5. The network’s lineup covers home, design, do-it-yourself, food, cooking, gardening and real-life journeys.



Four Upper: Welcome Home. © 2020 Magnolia Discovery Ventures, LLC. Credit: Lisa Perle. Homegrown: Credit: Edgier Creative. The Last Kitchen: Credit: Magnolia Discovery Ventures, LLC. Magnolia Table With Joanna Gaines: © 2020 Magnolia Discovery Ventures, LLC. Credit: Jessica Allen. Home Work: © 2020 Magnolia Discovery Ventures, LLC. All rights reserved. Credit: Lindsay Salazar.

## TOP SHOWS TO LOOK FOR ...

### FAMILY DINNER

Sundays at 8pm & 8:30pm beginning Jan. 9

Host Andrew Zimmern visits families across America to explore how the cultural, regional and historical facets of who we are inform what and how we eat.



### FIXER UPPER: WELCOME HOME

Wednesdays at 9pm beginning Jan. 5

Chip and Jo share new ideas for turning outdated homes into jaw-dropping, innovative living spaces. Having expanded their business (and their family), the



Gaineses now juggle more while renovating, which keeps things unpredictable.

Chip & Joanna Gaines: © 2021 Getty Images. Credit: Corey O'Neil/Getty Images. Family Dinner: © 2021 Magnolia Discovery Ventures, LLC. Credit: Scott Gies. The Johnsons Show: © 2020 Magnolia Discovery Ventures, LLC. Credit: Sam Drasin.



## THE JOHNNYSWIM SHOW

Saturdays at 7pm  
beginning Jan. 8

Husband-and-wife musicians Amanda Sudano and Abner Ramirez, who comprise the folk/soul/blues/pop duo Johnnyswim, are the subjects of this series that follows them as they adjust to life and raising their kids at home after years of doing so aboard a tour bus before the COVID-19 pandemic canceled their touring.



## HOMEGROWN

Saturdays at 11am & 11:30am  
beginning March 19

Atlanta-based farmer Jamila Norman helps families transform outdoor spaces into beautiful and functional backyard farms.



## INN THE WORKS

Mondays at 9pm & 9:30pm beginning March 21

In the first two seasons of her show, Lindsey Kurowski has taken on epic restorations of historic lodgings, one in Big Bear Lake, California, another in the Berkshires, Massachusetts.

## THE LOST KITCHEN

Thursdays at 9pm  
beginning Jan. 6

Over two seasons so far, this series follows Erin French and her restaurant, The Lost Kitchen, in Freedom, Maine, which attracts travelers from all over the world.



## MAGNOLIA TABLE WITH JOANNA GAINES

Sundays at 1pm & 1:30pm  
beginning Jan. 9

In four seasons to date, Magnolia Network cofounder Joanna Gaines spends time in the kitchen sharing her favorite recipes.



## RANCH TO TABLE

Sundays at 2pm beginning March 20

Seventh-generation cattle rancher and entrepreneur Elizabeth Poett runs her family's 14,000-acre ranch while crafting regional dishes using her own fresh ingredients.

## RESTORATION ROAD WITH CLINT HARP

Tuesdays at 9pm beginning Jan. 11

Carpenter Clint Harp hits the road in search of historical structures across the country that are in need of restoration, while exploring their origins and dreaming of their futures.

# MEET MAGNOLIA'S NEWEST STARS: CANDIS AND ANDY MEREDITH OF "HOME WORK"

Prior to launching Magnolia Network, Chip and Joanna Gaines helped popularize the concept of the home-renovation power couple. Since Magnolia's streaming debut on discovery+ last July, viewers have been enchanted by the latest such duo, Candis and Andy Meredith. The Merediths' series *Home Work* makes its Magnolia Network linear debut Jan. 8 (airing Saturdays at 9pm) and follows them as they transform a 20,000-square-foot historic school into their home while juggling client projects, rental properties and life with their blended family of nine (they have seven children).

Candis has loved houses since she was a 3-year-old watching her grandpa build her playhouse. She started renovating on her own at 16 and bought her first historic home to renovate at 21. When the couple got married, Candis had seven historic remodels happening at once and asked Andy to "retire" from his longtime high-level tech sales job and come work for her, where he discovered that this was his passion.

We chatted with Candis and Andy ahead of *Home Work*'s linear premiere and, like on their show, they worked as a team for joint answers to questions about their series and life.



### What has been the fan reaction to *Home Work*?

We have been completely overwhelmed by the amount of love for the show! We've received thousands of very kind messages about how calming it feels and how it makes people feel happy.

### Are you excited for your show to reach a linear audience?

We talk about it every day, that a linear audience will see what we've made. ... We've always wanted to share our love for what we do — old houses, antiques, DIY projects, our love for our family — but to share it on such a big scale is such an honor.

### What other shows on Magnolia Network inspire you?

We are *obsessed* with the shows on Magnolia Network. ... They are all so truly inspiring. We love Lindsey Kurowski's grit on *Inn the Works*, Brian Patrick Flynn's approach to design on *Mind for Design*, deVOL's timeless kitchens on *For the Love of Kitchens*. Jamila [Norman], Elizabeth [Poett], Jonathan [Morris], Clint [Harp], Erin [French], Chip and Joanna, Abner and Amanda [Ramirez], Brooke and Brice [Gilliam], Zoë [François], Andrew [Zimmern], Brett [Lewis] — the list of [Magnolia hosts] we admire is *endless*!





Cynthia Nixon and  
Christine Baranski

# THE TOP 24

## NEW SHOWS TO START THE NEW YEAR!

### 1 THE GILDED AGE

Mondays beginning Jan. 24 on HBO  
Stream On: HBO Max  
**NEW SERIES!**

Imagine a time in American history when rich white people discriminated against other rich white people for being the wrong kind of rich white people.

From *Downton Abbey* creator Julian Fellowes comes *The Gilded Age*, a period drama set in 1882 New York City, where new technological advances, new ideas and new money are challenging the established social order.

Young Pennsylvania woman Marian Brook (Louisa Jacobson) is left penniless following her father's death, and she

seeks help from the only family she has: crusty upper-crust aunts Agnes van Rhijn (Christine Baranski) and Ada Brook (Cynthia Nixon) in New York. Marian moves in with her aunts and finds herself thrust into the social sphere of old money and its nearly impenetrable caste system.

Marian befriends Peggy Scott (Denée Benton), a talented Black writer from Brooklyn, who is hired by Aunt Agnes to help her catch up on her correspondences. Peggy's presence complicates the social strata within the house, fueling resentment among some who do not want her there.

Across the street from Marian's aunts' manor, George (Morgan Spector)

and Bertha Russell (Carrie Coon), who've made a fortune in the railroads, have built a lavish mansion. Bertha is desperate to be accepted by the old guard, but they humiliatingly spurn her. As architect Stanford White (John Sanders) explains, "They have been in charge since the *Mayflower* landed and now it's your turn. Because you are the future. And if you are the future, then they must be the past. That's what frightens them." Unable to join them, Bertha makes it her mission to destroy them.

And in true Fellowes fashion, *The Gilded Age* is teeming with intrigue for the housekeepers and servants to murmur about. — Ryan A. Berenz



## 2 JANET

Friday, Jan. 28 and  
Saturday, Jan. 29  
on LIFETIME and A&E

In celebration of the 40th anniversary of Janet Jackson's first album, *Janet Jackson* (1982), the superstar shares her own story. This two-night, four-hour documentary "is my story told by me," Janet shares. "Not through someone else's eyes." The music powerhouse was in her teens when she signed her first recording contract. She went on to become one of the bestselling and highest-earning artists in music history. Janet enjoyed immense levels of success, experienced incredible tragedy and endured a tumultuous private life in the face of extraordinary public scrutiny over that infamous wardrobe malfunction at the 2004 Super Bowl. The docuseries is an intimate, honest and unfiltered look at her untold story, which lifts the lid on her private life for the very first time and reveals some of her most intimate moments ever caught on camera.



## 3 GOOD SAM

Wednesdays beginning  
Jan. 5 on CBS  
**NEW SERIES!**

Sophia Bush stars in the new medical drama *Good Sam* as Dr. Sam Griffith, a gifted heart surgeon who takes over as chief of surgery after her arrogant, egotistical boss (Jason Isaacs) falls into a coma. Months later, however, he wakes up from his coma and demands to resume his leadership. Now Sam must deal with supervising him, even though he has never supported her or her talent. And adding insult to injury, he's her father. Now the two are butting heads over everything from running the hospital to dealing with patients. Will they ever be able to work together or fix their relationship?





4

## THE CLEANING LADY

Mondays beginning Jan. 3 on FOX  
**NEW SERIES!**

"When I got this part, my husband looked at me like, 'Really? You are going to be the cleaning lady?'" I could show you a picture of the room I'm staying in right now," laughs Élodie Yung, fully admitting cleaning isn't her thing. But traditional cleaning is not what this role is all about.

Yung stars as Thony, a Cambodian surgeon who comes to the U.S. to pursue a lifesaving medical treatment for her young son. Originally here on a medical visa, complications arise and she is forced to stay as an undocumented immigrant, where she makes ends meet living and working with her sister-in-law (Martha Millan) as a cleaning lady.

"She's facing a horrible decision: Do I go back home and then that's it? There's no chance for my son to get any cure? Or do I overstay my visa and make the choice of being undocumented and potentially find a cure for my son?" Yung explains. That backstory, however, is just one of her problems.

"Things go wrong when she's cleaning and witnesses a murder committed by the mob," Yung tells. "She's just constantly forced to make instant, horrible choices." From there she begins to live a double life, working for the handsome Arman (Adan Canto), who is one of the leaders of a crime syndicate, and doing whatever it takes to save her son. Thankfully, her savvy smarts — she does a wicked makeshift tracheotomy with a pen — yield her some power.

"When I played Elektra [in the Marvel series *Daredevil* and *The Defenders*] I had to be very physical," Yung says when comparing her characters' resilience. "For Thony it's a horrific, emotional journey that she's going through, but there's nothing physical in this part, which I am kind of very happy with. I've done it. It's been fun. But let me play with other tools. I have been really praying for a part like this, where I could really express what I have in my heart. And I do feel that Thony has given me the opportunity to really express my feelings, my emotions. And my truth."

And truth be told, this is the new series to add to your must-watch list this winter. — *Barb Oates*



## 5 RAY DONOVAN: THE MOVIE

Friday, Jan. 14 on SHOWTIME  
**ORIGINAL FILM!**

Fans and showrunner David Hollander were in shock when Showtime's *Ray Donovan* was canceled with no advance warning after its seventh season. Season 8 was supposed to be the final season, and Hollander already had it planned out. Instead, this feature-length film will conclude the storyline. It picks up where Season 7 left off. "I let the wolf in," Ray (Liev Schreiber) tells his therapist, after confessing he's done something bad. Ray is trying to find Mickey (Jon Voight) before he causes more carnage. The present-day fallout from the Donovan/Sullivan feud and Ray and Mickey's origin story will also be explored. We learn there's a reason Mickey is the way he is — he was raised in a whorehouse and beaten every day. But in both Ray and Mickey's case, you can't outrun your legacy. Gary Levine, president of entertainment for Showtime Networks, assured fans upset about the abrupt cancellation that their concerns have been heard and that this movie gives the series a more graceful landing.





## WOMEN OF THE MOVEMENT

Thursdays, Jan. 6, 13 & 20 on ABC

**NEW SERIES!**

During this month in which we celebrate the birth and influence of Martin Luther King Jr., one of the most iconic civil rights leaders in American history, ABC will also premiere *Women of the Movement*, a limited series that explores the influence of a notable woman who played an earlier key role in igniting the civil rights movement as we know it today – Mamie Till-Mobley.

Tony-winning actress Adrienne Warren portrays Mamie in the six-episode historical drama that airs over three consecutive Thursdays (two hours air each of the first two nights, with the final evening encompassing a two-and-a-half-hour block). It chronicles the true story of how, in 1955, Mamie risked her life to find justice after her son Emmett (Cedric Joe) was brutally murdered in the Jim Crow South. Unwilling to let Emmett's murder disappear from the headlines, Mamie chose to bear her pain on the world's stage, emerging as an activist for justice.

Following each episode of *Women of the Movement* will be an installment of a companion docuseries from ABC News called *Let the World See*. It features interviews with Emmett Till's family and contemporary voices as it draws a through line from past to present.

## 8 SECRETS OF PLAYBOY

Mondays beginning Jan. 24 on A&E

**NEW SERIES!**

For well over 50 years, Hugh Hefner kept a tight rein on the empire he launched with *Playboy* magazine. Now, four years after his death, this 10-hour docuseries explores the hidden truths behind the glamorous mythology of that famous brand through a modern-day lens.

*Secrets of Playboy* focuses that lens by using archival footage and exclusive interviews with members of Hefner's inner circle, some of Hef's past girlfriends, former Playmates, colleagues, executives and employees. Many of these interviewees are sharing their stories for the first time, ready to relate the full story of what life at Playboy was truly like.

"We look at all divisions of Playboy," says executive producer/showrunner/director Alexandra Dean, "and each episode actually looks at a different part of Playboy."

The series explores how the powerful Playboy machine, at its worst, manipulated women in a toxic environment, silenced their voices, pitted them against one another and opened the door to sexual predators.



## 7 PROMISED LAND

Mondays beginning Jan. 24 on ABC

**NEW SERIES!**

*Promised Land* promises to be engrossing, epic television, centering on generations of two Latino families fighting for wealth and power in California's Sonoma Valley. Leading the pack is Joe Sandoval (John Ortiz), the patriarch of one family who took over a small vineyard and made it into a wine empire. Joining him is his wife, Lettie (Cecilia Suárez), who will do anything to protect her family. Also starring is Bellamy Young as a nemesis of Joe's.



## MONARCH

Premieres Sunday, Jan. 30;  
airs Tuesdays beginning Feb. 1 on FOX

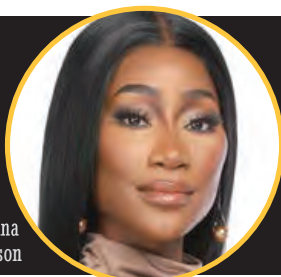
### NEW SERIES!

The dark side of country music is coming out. FOX's new drama *Monarch* follows the first family of country music in an epic tale of lies and betrayal. The matriarch and patriarch of this family, the Romans, are Dottie (played by Susan Sarandon) and Albie (portrayed by country music star Trace Adkins). Together, the duo have created a dynasty, but now it's on shaky ground. Their daughter, Nicky (Anna Friel), is ready to do everything she can to protect her family's musical reign as well as navigate her own growing career.

"Everybody has secrets. Everybody has agendas,"

explained Adkins. Having been in the industry for 25 years – his anniversary album came out earlier this year – Adkins has had a front-row seat to country music. His character is described as the "Texas truth-teller," but even that appears to be a lie. "He has as many secrets as anybody does, but that's just been the moniker that he's portrayed himself as, this old-school OG truth-teller in his music. And so, that's just been kind of the handle that he's gone by, but don't take it literally."

So how close does the show actually echo the country music world? Well, according to Adkins, it's closer than you'd think. "They have people that are consulting on this show that have pretty good insight about how things work and just what the underbelly actually looks like. So it's kind of startling sometimes how close they actually get."



Quiana  
Watson

## 10 LADIES WHO LIST: ATLANTA

Fridays beginning Jan. 7 on OWN

### NEW SERIES!

This new series follows six Black women as they make a name for themselves in the luxury real estate market. As brokers, attorneys and agents, they help buyers find their dream homes in the competitive Atlanta area while balancing their personal lives as well. This season, the women will experience everything from fertility issues to beginning therapy as they juggle being at the top of their game in their careers.





## 11 PIVOTING

Premieres Sunday, Jan. 9;  
airs Thursdays beginning Jan. 13 on FOX  
**NEW SERIES!**

*Pivoting* showrunner Liz Astrof had a profound moment at age 40 when her childhood friend died of cancer. "At the funeral, I was struck by the realization that not only am I mortal, I am also not 22 anymore! I don't have my whole life ahead of me!" Astrof says. "Is this where I dreamed I'd be at ... 40? Am I happy? Is anyone happy? What is happy? And is it too late to do it all differently? To press the 'reset' button?" Out of that experience, Astrof crafted this comedy about three longtime friends – Sarah (Maggie Q), Jodie (Ginnifer Goodwin) and Amy (Eliza Coupe) – who cope with the death of the fourth member of their group by radically changing their lives. Career-driven Amy pivots toward being a present mom. Stressed-out physician Sarah pivots toward a grocery store job. And neglected housewife Jodie pivots toward her hot personal trainer. Together, the ladies discover that the journey toward happiness can be a sometimes rough, often awkward ride.

– Ryan A. Berenz

## 12 SINGLE DRUNK FEMALE

Thursdays beginning Jan. 20 on FREEFORM  
**NEW SERIES!**

"I had one bad day that turned into a Class A misdemeanor [aka reckless assault]," tells 28-year-old alcoholic Samantha "Sam" Fink (Sofia Black-D'Elia) to her probation officer. That drunken workplace meltdown almost blinded her coworker and definitely solidified her termination from a New York media company. In this heartfelt 30-minute dramedy, Sam is forced to return to her Boston home and sober up to avoid jail time.

"I felt like I knew her. I felt like she was in my life already, and very familiar to me, and grounded but funny," Black-D'Elia tells us. "I felt like this was a girl who really takes it too far, and you should feel that when you watch it."

And you do. Her character's story is based on writer Simone Finch's real life. Challenging Sam's every attempt at sobriety are remnants of her old life, including her "smother" Carol (Ally Sheedy, in a very quirky and welcome return to TV).

"Simone did such a beautiful job of exploring the mother/daughter dynamic in a really real way with all of its complexities. We often think of these addiction stories as, as soon as you say you have a problem, everybody comes running to your aid," Black-D'Elia adds. "But the truth is that a lot of people who suffer from addiction have been @#\$%heads to a lot of the people in their lives for a long time, and forgiveness isn't always that easy."

At its core, the series gives an honest yet lighthearted look at the struggles of alcoholism, dysfunctional families and friendship. – Barb Oates







## AMERICAN AUTO

Tuesdays beginning Jan. 4 on NBC  
**NEW SERIES!**

You know that awkward, unnerving feeling when your company announces a new CEO? No matter where you sit on that corporate ladder, you just never know if your job is secure. NBC's new laughter *American Auto* pokes fun at that terrifying transition along with all the kookiness of corporate culture. Creator Justin Spitzer follows up his successful *Superstore*, hilariously touching on hot topics companies typically try to stay

clear of. *SNL*'s Ana Gasteyer portrays Katherine, the brash new CEO of Detroit's Payne Motors, who doesn't know a thing about cars (heck, the lady can't even drive!) but relies heavily on her eccentric team of executives. Coming from a Big Pharma background, Katherine fumbles at almost every turn trying to save face and keep the business alive. Here we catch up with Gasteyer:

### What excited you about playing Katherine?

**Ana Gasteyer:** What I love from a comedic standpoint is any time that

somebody has to save face. She wants money, and she's very clear about the fact that she doesn't have particularly strong moral fibers. But she at the same time really wants to succeed, and she doesn't want people to see her as a failure. So, it's super fun just to play that balance all the time on the show.

### Katherine previously led a Big Pharma company, so what if anything is she good at?

I definitely think she's very comfortable with authority, she's very comfortable with leading. CEOs are kind of ADD by

## ANA, ANA, ANA!!! A Biofile Of Random Fun On The Comedy Great



### A Clüsterfünke Christmas

Ana recently starred in and cowrote this Comedy Central original parody on Hallmark movies.



### The Singing Holiday Tree

Disguised as the adorable Tree, Ana was cut just before the semifinals of Season 2 of *The Masked Singer*.



### Suburgatory

She played the annoying and naggy, resident stalking pot-roast giver Sheila Shay, who had an odd affection for Shirley Temple dolls.



### SNL Favorite: Miss Bobbi Moughan-Culp

Ana and Will Ferrell starred as Bobbi and Marty Culp, middle school music teachers against drug use.



### SNL Favorite: "Martha Stewart Topless Christmas Special"

This 1996 sketch is forever a classic.









## LEAVE IT TO GEEGE

Wednesdays beginning Jan. 12 on LIFETIME  
**NEW SERIES!**

Fans of *Chrisley Knows Best* will appreciate this new Southern-set docuseries following single mom Geege Taylor and her nonverbal 19-year-old son Pootie, along with their offbeat group of family and friends. The seemingly always positive Geege explains that her Athens, Georgia, gang is definitely more of a modern take on the traditional family than, say, *Leave It to Beaver*, from which the title was spun. "I feel like I'm just the ringmaster of the show, and everybody in my life kind of leans on me a little bit." Her crazy circus includes her son's caregiver Tyler, who lives with them, as well as her mother, daughter, extended family and friends. "I feel like all of these characters in my life kind of circulate around me and depend on me, and I mother all of them, and they keep me young. But they're also the village that help me bring up Pootie, because it's a lot to raise a son with autism, and Pootie is on the severe end of that spectrum. It's amazing to have this whole village of people come around me and help me lift him up and help me raise him." A breast cancer survivor who was divorced twice and is now sharing her bedroom with Pootie to monitor his seizures, Geege provides a beacon of hope and laughter to other families who have children with autism. "If I can help anybody, then I'm all in," she says. "I loved the idea of doing something positive, because when Pootie was first diagnosed there was hardly anything positive in the media about autism. It was all just kind of gloom and doom. It just got me down, and I wanted to see a change. ... I feel honored that I've gone through the things I've gone through, because I feel like it's just taken me to a greater place." — *Barb Oates*

## 17 PEACEMAKER

Stream On: HBO MAX  
Available Thursday, Jan. 13

**NEW SERIES!**

The *Suicide Squad* writer/director James Gunn is the creator, writer and executive producer of this new eight-episode series, and he also directed five episodes, including the first. Based on characters from DC Comics, the series is set after the events of *The Suicide Squad* and explores the origin story of supervillain Peacemaker (John Cena), the egotistical, costumed black-ops soldier who will kill anyone (man, woman or child) to maintain peace. Expect a blend of laughs and graphic violence. The rest of the cast includes Danielle Brooks, Freddie Stroma, Jennifer Holland, Steve Agee, Robert Patrick and Chukwudi Iwuji.







18

## AROUND THE WORLD IN 80 DAYS

Sundays beginning Jan. 2 on PBS

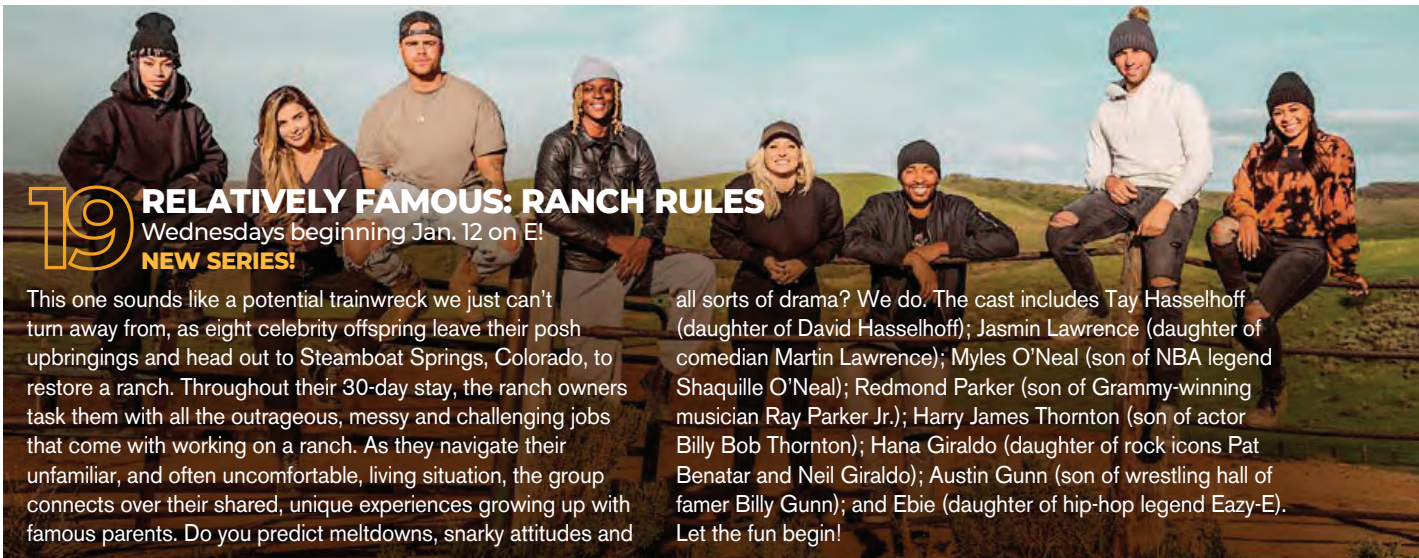
### NEW SERIES!

Long before *The Amazing Race*, Jules Verne's classic 1873 novel *Around the World in Eighty Days* captured imaginations with a fictional depiction of a globetrotting race competition. This month, PBS' *Masterpiece* presents an innovative eight-episode adaptation of Verne's tale, a fun and colorful British-French coproduction that was shot on location on two continents and introduces new themes, characters and stories within the familiar main narrative.

David Tennant stars as Englishman Phileas Fogg, who, in

1872, bets a fortune that he can circumnavigate the planet in just 80 days. Joined by his sharp-witted new valet, Passepartout (Ibrahim Koma), and doggedly followed on his quest by reporter Abigail "Fix" Fortescue (Leonie Benesch), Fogg races against the calendar to complete his journey, encountering memorable characters and trying to overcome whatever obstacles that fate – or someone who may not want him to succeed – puts in his way.

*Around the World in 80 Days* has already been renewed for a second season, and its producers are also developing a series adaptation of another Verne classic, *Journey to the Center of the Earth*. – Jeff Pfeiffer



19

## RELATIVELY FAMOUS: RANCH RULES

Wednesdays beginning Jan. 12 on E!

### NEW SERIES!

This one sounds like a potential trainwreck we just can't turn away from, as eight celebrity offspring leave their posh upbringings and head out to Steamboat Springs, Colorado, to restore a ranch. Throughout their 30-day stay, the ranch owners task them with all the outrageous, messy and challenging jobs that come with working on a ranch. As they navigate their unfamiliar, and often uncomfortable, living situation, the group connects over their shared, unique experiences growing up with famous parents. Do you predict meltdowns, snarky attitudes and

all sorts of drama? We do. The cast includes Tay Hasselhoff (daughter of David Hasselhoff); Jasmin Lawrence (daughter of comedian Martin Lawrence); Myles O'Neal (son of NBA legend Shaquille O'Neal); Redmond Parker (son of Grammy-winning musician Ray Parker Jr.); Harry James Thornton (son of actor Billy Bob Thornton); Hana Giraldo (daughter of rock icons Pat Benatar and Neil Giraldo); Austin Gunn (son of wrestling hall of famer Billy Gunn); and Ebie (daughter of hip-hop legend Eazy-E). Let the fun begin!



20

**SNOWPIERCER**Mondays beginning Jan. 24 on TNT  
**SEASON PREMIERE!**

The postapocalyptic thrill ride returns for Season 3 with some hope for a possible warm location to restart civilization. But the current uninhabitable frozen world really isn't the survivors' main problem.

When last we left the divided group, Layton (Daveed Diggs) and Ruth (Alison Wright) plotted to take back *Snowpiercer* from the unhinged and sadistic Mr. Wilford (Sean Bean). Melanie (Jennifer Connelly) made it back to the research station after the train passed her by, but it appears she didn't survive the elongated isolation. Layton and Alex (Rowan Blanchard) are now on the 10-car pirate train, while Ruth got stuck with Wilford, leaving us very, very concerned. Here we catch up with Wright to get insights into her character's predicament.

**In Season 3, where do we pick up with Ruth?**

**Alison Wright:** Well, we pick up with a little bit of a time jump when we begin Season 3, and we'll see the new world that she's existing in. Of course, she's stuck on the train that she does not want to be on with her frenemy, Kevin, who she electrocuted with a cattle prod, and Mr. Wilford, who she has completely betrayed. And because, well, she knows everybody else is on that pirate train, so when we start we find her a few months down the line, and we'll see her existing as best she can and trying to stay hidden from Mr. Wilford.

**What do you think would be her smartest move when it comes to surviving this?**

All we know is that the trains have split and that one train is, so far, it looks good that they're going to manage to find Melanie and hopefully life. And we don't really know what the situation is going to be on the main train *Snowpiercer*. I think that it would be hard to imagine Ruth would be able to snuggle back up to Mr. Wilford at this point, but you never know. I think she's been pretty seriously disillusioned by him and very disappointed by him not being the hero that she thought he was. So I can't imagine she would be able to, but maybe she'll be forced to stay in his good graces. We shall have to see.

**And what about the Teals (the Hospitality team)? Are we still going to see you in the Teals?**

The Teals are still around. I mean, she missed getting on that pirate train because of the Teals. It's the only reason she's not on that train, but that shows her love for the Teals, her love for the uniform, her love for the life that she thought she had, the person she thought she was. She missed that train because she couldn't give that up. — *Barb Oates*



Sneak Peek! This Season 3 preview pic shows us Ruth may be in for a rough time.





## THIS IS US

Tuesdays beginning Jan. 4 on NBC

**SEASON PREMIERE!**

Here's something to cry about: This is the end for *This Is Us*. The time-jumping, heartstring-tugging and often mind-blowing drama about the Pearson family begins its sixth and final season of 18 episodes. Creator Dan Fogelman had the show's endgame in mind for some time and had been writing stories set well into the future, which would explain the apparent five-year flash forward in the Season 5 finale. The "Big 3" – Kevin (Justin Hartley), Kate (Chrissy Metz) and Randall (Sterling K. Brown) – celebrate their 41st birthdays in the Season 6 premiere. Fans will hopefully find out why Kate is married to Phillip (Chris Geere) instead of Toby (Chris Sullivan); who Kevin's in love with now; and how Rebecca (Mandy Moore) has dealt with Alzheimer's.

## 22 THE AMAZING RACE

Wednesdays beginning Jan. 5 on CBS

**SEASON PREMIERE!**

Knowing the race is such a logistical challenge even without a global pandemic, we can't even begin to imagine just how difficult it was to complete this season. After suspending production in early 2020 due to the pandemic, the race officially resumed in September 2021. CBS chartered a special plane – adorned with *The Amazing Race* logo on its side – to keep racers safe and transport them to some locations. Teams were not announced as of presstime, but originally *Love Island* couple Ray and Caro were the familiar faces on the race. Whether they returned after filming resumed, knowing they broke up, is not known. What is known is host Phil Keoghan is back for the competition series' 33rd season, where he promised brand-new locations and new challenges!



## 23 OZARK

Stream On: NETFLIX  
Available Friday, Jan. 21

**SEASON PREMIERE!**

The first half of the fourth and final season of the hit crime drama *Ozark* hits Netflix nearly two years after Season 3 debuted. Last season's explosive finale featured a cremation, violent confrontations, arrests, deaths and the end of



business relationships, resulting in a dramatic repositioning of the criminal endeavors of Marty (Jason Bateman) and Wendy Byrde (Laura Linney). The Byrdes will have to balance running their casino in Missouri with an enhanced partnership with the Mexican drug cartel they have been laundering money for. Will they get away with it or pay a price for their life of crime? Each half of Season 4 consists of seven episodes; the second half will be released later in the year. Cast members Julia Garner, Charlie Tahan, Felix Solis and Lisa Emery all return.



## 24 BLACK-ISH

Tuesdays beginning Jan. 4 on ABC

**SEASON PREMIERE!**

The groundbreaking comedy that challenged viewpoints, sparked meaningful conversations and launched an -ish franchise will go out in style in its eighth and final season. "We are grateful along with ABC to be able to make this final season exactly what we'd hoped for – and to do it with the entire and amazingly stellar cast coming back," says creator Kenya Barris. Last seen, *Boyz II Men* serenaded Dre (Anthony Anderson) as he finally got a big promotion at the ad agency. Among the guest stars in Season 8 is former first lady Michelle Obama.

One more shot? Aaron Rodgers and the Green Bay Packers hope to get over the hump after losing two straight NFC title games.

# GOING LONG

The NFL Playoffs Run A Deep Route Into Winter. By Ryan A. Berenz

After the NFL added more playoff teams last season and added another week to the regular season this year, football fans are about to find out if more is truly merrier.

The regular season wraps up Jan. 8-9 with Week 18 determining postseason participants and seeding. Expect the usual mix of playoff-bound teams resting their players and teams on the bubble going full-bore in an effort to play football instead of golf the following weekend.

In the AFC, top playoff hopefuls include the Baltimore Ravens, New England Patriots, Tennessee Titans, Kansas City Chiefs, Cincinnati Bengals and Buffalo Bills. Likely playoff participants in the NFC are the Arizona Cardinals, Green Bay Packers, Dallas Cowboys, L.A. Rams and the defending Super Bowl champion Tampa Bay Buccaneers.

The playoffs kick off on wild-card weekend with two games Saturday, Jan. 15, three games Sunday, Jan. 16, and one game on Monday, Jan. 17. AFC and NFC wild-card games have the No. 2 seed hosting the No. 7 seed, No. 3 hosting No. 6 and No. 4 hosting No. 5. (The No. 1 seed has a bye.) CBS and NBC air two wild-card games each, with ESPN/ABC and FOX each airing one.

Divisional playoffs are Jan. 22-23 on CBS, FOX and NBC, followed by the conference championships Sunday, Jan. 30, on CBS (AFC) and FOX (NFC).

After being canceled last season, the Pro Bowl is back on for Sunday, Feb. 6, at Allegiant Stadium in Las Vegas on ABC/ESPN.

The Super Bowl returns to Los Angeles for the first time since 1993 when Super Bowl LVI is played at SoFi Stadium in Inglewood, California, Feb. 13 on NBC.

## Network Note: NBCSN Signs Off

Sports network NBCSN is going dark as of Jan. 1, 2022. As a result, USA Network expands its sports offerings in 2022, featuring English Premier League soccer, the Beijing Winter Olympics, figure skating, NASCAR, IndyCar, British Open and U.S. Open golf, horse racing, the Tour de France, and more. Many of these sports will continue to air on the NBC broadcast network.

Aaron Rodgers: Credit: Stacy Revere/Getty Images; Kirill Kaprizov: Credit: Ethan Miller/Getty Images

## THE DEPTH CHART

### U.S. Figure Skating Championships

NBC and USA Network present live coverage of the Toyota U.S. Figure Skating Championships from Nashville, Tennessee, Jan. 6-9. The Skating Spectacular airs Jan. 15 on NBC.

### College Football National Championship

The two teams emerging from the New Year's Eve semifinal games play for the national championship on ESPN Jan. 10 at Lucas Oil Stadium in Indianapolis.

### NHL Winter Classic

The NHL's Winter Classic outdoor game airs on TNT for the first time as the St. Louis Blues face off against the Minnesota Wild Jan. 1 at Target Field in Minneapolis.

### NBA Basketball

Martin Luther King Jr. holiday NBA games have the Charlotte Hornets at the N.Y. Knicks (NBA TV), the Chicago Bulls at the Memphis Grizzlies (TNT), an East Finals rematch with the Milwaukee Bucks at the Atlanta Hawks (TNT) and the Utah Jazz at the L.A. Lakers (NBA TV).

Minnesota Wild left wing Kirill Kaprizov





PREMIER BOXING CHAMPIONS

5 HEAVYWEIGHT SHOWDOWNS

ORTIZ vs MARTIN



PLUS

FRANK SANCHEZ vs CARLOS NEGRON  
JONATHAN RICE vs MICHAEL COFFIE II  
GERALD WASHINGTON vs ALI EREN DEMIREZEN

AND MORE

SATURDAY, JANUARY 1  
PAY-PER-VIEW

**LIVE! Saturday, Jan. 1 at 8pm ET**

Standard Definition: \$39.99    High Definition: \$39.99

Event dates, cards, times, and prices subject to change. HD programming requires HD receiver and HD television (sold separately).

© 2017 All rights reserved. All marks and times subject to change.

Available in  
**HD**

Order now: Call 1-877-DISH PPV (347-4778) or online at [mydish.com/boxing](http://mydish.com/boxing)



# NETFLIX

Website: [netflix.com](https://netflix.com)

**Subscription Cost:** Basic \$8.99/month (can only watch on one device at a time), Standard \$13.99/month (two devices at a time), Premium \$17.99/month (four devices at a time).

## ORIGINAL SERIES



### The Woman in the House Across the Street From the Girl in the Window

**Available Jan. 28**

Kristen Bell is an executive producer on and stars in this darkly comedic, wine-soaked,

eight-episode satirical take on psychological thrillers that promises to have you guessing who, what, where, why and how in the hell?! until the very end. Bell plays heartbroken Anna, for whom every day is the same. She sits with her wine, staring out the window, watching life go by without her. But when a handsome neighbor (Tom Riley) and his adorable daughter (Samsara Yett) move in across the street, Anna starts to see a light at the end of the tunnel. That is, until she witnesses a gruesome murder ... or *did* she?



### In From the Cold

**Available Jan. 28**

During a European vacation with her daughter, an American single mother's life is turned upside down when the CIA forces her to confront her long-buried past as a

Russian spy who was also the product of a highly classified KGB experiment granting her special abilities. After a mysterious string of manic and murderous incidents suggests someone with her exact abilities is targeting innocent people, Jenny (Margarita Levieva) is forced out of hiding to stop this villain or risk losing the family and new life she has built.



### The Journalist

**Available Jan. 13**

This Japanese drama is an adaptation of the 2019 theatrical feature film of the same name that was a hit in that country, becoming buzzworthy for its confrontation of Japanese political

crimes and scandals of recent years. With its shocking tackling of societal taboos, thrilling developments and stylish visuals, the film won awards in three major categories at the 43rd Japan Academy Awards, including Best Picture of the Year, as well as many other film awards. In this new series, Ryoko Yonekura plays Anna Matsuda, a Toto Newspaper reporter known as the "maverick of news media," who strives to expose issues in modern Japanese society. Michihito Fuji, who directed the movie, also directs the series.



### Archive 81

**Available Jan. 14**

In this supernatural horror series that includes the *Conjuring* franchise's James Wan as an executive producer, archivist Dan Turner (Mamoudou Athie) takes a job restoring

a collection of damaged videotapes from 1994. Reconstructing the work of a documentary filmmaker named Melody Pendras (Dina Shihabi), he is drawn into her investigation of a dangerous cult at the Visser apartment building. As the episodes unfold across these two timelines, Dan slowly finds himself obsessed with uncovering what happened to Melody. When the two characters form a mysterious connection, Dan becomes convinced he can save her from the terrifying end she met over a quarter century ago. *Archive 81*'s story is loosely inspired by the popular podcast of the same name.



### Rebelde

**Available Jan. 5**

This Mexican teen drama is based on the 2004-06 Mexican telenovela of the same name, and on the 2002-03 Argentine telenovela *Rebelde Way*. Filmed in Mexico City, the

series is set at an elite school that shapes young students into entertainment stars ready for the big stage.



### The Orbital Children

**Available Jan. 28**

Airing in Japan as a two-part series of films, this sci-fi anime is presented by Netflix in the States as a six-episode series. The story begins in the year 2045, when artificial intelligence

(AI) has advanced and anyone can travel into space. A massive accident occurs on a newly opened Japanese commercial space station, and a group of children are left behind. With no hope of rescue from adults, their lifeline is a barely surviving narrowband, a social network, a free application of low-intelligence AI and a drone. Will they be able to use these tools to survive the crisis?



### The Club: Part 2

**Available Jan. 6**

This Turkish period drama returns with new episodes. It is set in cosmopolitan 1950s Istanbul, where a mother with a troubled past works at a nightclub to reconnect with and help

the rebellious daughter she couldn't raise.



## ORIGINAL FILMS



### The House

Available Jan. 14

Some of the leading voices in independent stop-motion animation – Emma de Swaef and Marc Roels, Niki Lindroth von Bahr and Paloma Baeza – direct the trio of surreal tales in this eccentric dark comedy anthology about a house and the individuals who have made it their home.



### The Wasteland

Available Jan. 26

This Spanish horror film follows a 19th-century family whose tranquil lives isolated from the rest of society are disturbed when they are visited by an evil being that feeds on fear. Can little Diego (Asier Flores) save his mother from the beast – and herself?

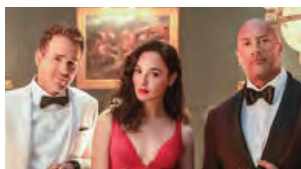
## CAN'T-MISS 2021 ORIGINAL MOVIES



### The Unforgivable



### The Harder They Fall



### Red Notice



### The Dig



### Don't Look Up



### The Guilty



### Vivo



### The Power of the Dog

## RETURNING ORIGINAL SERIES



### Ozark – Season 4, Part 1 Available Jan. 21

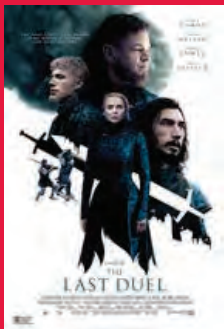


### Queer Eye – Season 6 Available Dec. 31



### Undercover – Season 3 Available Jan. 10

# Don't Miss These HOLLYWOOD HITS



For movie descriptions, premiere dates and ordering information, see pages 32-35

Extended Previews, Sneak Peeks and Exclusive Interviews on Channel 102

**SUN.****MON.****TUE.**

Dune — Available Jan. 25



Halloween Kills — Available Jan. 11

**2**

The Addams Family 2  
American Refugee  
Belfast  
Black Widow  
Copshop  
Cruella  
Cry Macho  
Deadlock  
East of the Mountains  
Fortress  
The French Dispatch

Jungle Cruise  
The Last Duel  
Megaboa  
National Champions  
No Time to Die  
Shang-Chi and the Legend of the Ten Rings  
Stillwater  
Venom: Let There Be Carnage

**3**

The Addams Family 2  
American Refugee  
Belfast  
Black Widow  
Copshop  
Cruella  
Cry Macho  
Deadlock  
East of the Mountains  
Fortress

The French Dispatch  
Jungle Cruise  
The Last Duel  
Megaboa  
National Champions  
No Time to Die  
Shang-Chi and the Legend of the Ten Rings  
Stillwater  
Venom: Let There Be Carnage

**4**

The Addams Family 2  
American Refugee  
**Antlers**  
**Clifford the Big Red Dog**  
Copshop  
Cruella  
Cry Macho  
Deadlock  
Fortress  
The French Dispatch  
Jungle Cruise

The Last Duel  
**The Many Saints of Newark**  
Megaboa  
**A Mouthful of Air**  
National Champions  
No Time to Die  
Shang-Chi and the Legend of the Ten Rings  
Stillwater  
Venom: Let There Be Carnage

**9**

The Addams Family 2  
American Refugee  
American Siege  
Antlers  
Clifford the Big Red Dog  
The Commando  
Cruella  
Cry Macho  
Fortress  
The French Dispatch  
The Last Duel

The Many Saints of Newark  
Megaboa  
A Mouthful of Air  
National Champions  
No Time to Die  
Ron's Gone Wrong  
See for Me  
Shang-Chi and the Legend of the Ten Rings  
Venom: Let There Be Carnage

**10**

American Refugee  
American Siege  
Antlers  
Clifford the Big Red Dog  
The Commando  
Cruella  
Cry Macho  
Fortress  
The French Dispatch  
Jungle Cruise  
The Many Saints of Newark

Megaboa  
A Mouthful of Air  
National Champions  
No Time to Die  
Ron's Gone Wrong  
See for Me  
Shang-Chi and the Legend of the Ten Rings  
Stillwater  
Venom: Let There Be Carnage

**11**

The Addams Family 2  
American Siege  
Clifford the Big Red Dog  
The Commando  
Cruella  
Cry Macho  
Deadlock  
Fortress  
**Halloween Kills**  
Jungle Cruise  
The Last Duel

The Many Saints of Newark  
National Champions  
No Time to Die  
Ron's Gone Wrong  
See for Me  
Shang-Chi and the Legend of the Ten Rings  
Stillwater  
Venom: Let There Be Carnage

**16**

The Addams Family 2  
American Siege  
Arctic Void  
Black Widow  
Clifford the Big Red Dog  
The Commando  
Cruella  
Cry Macho  
Halloween Kills  
Jungle Cruise  
The Last Duel

The Many Saints of Newark  
National Champions  
No Time to Die  
Ron's Gone Wrong  
See for Me  
Shang-Chi and the Legend of the Ten Rings  
Shattered  
The Surprise Visit  
Venom: Let There Be Carnage

**17**

The Addams Family 2  
American Siege  
Arctic Void  
Black Widow  
Clifford the Big Red Dog  
The Commando  
Cruella  
Cry Macho  
Halloween Kills  
Jungle Cruise  
The Last Duel

The Many Saints of Newark  
National Champions  
No Time to Die  
Ron's Gone Wrong  
See for Me  
Shang-Chi and the Legend of the Ten Rings  
Shattered  
The Surprise Visit  
Venom: Let There Be Carnage

**18**

The Addams Family 2  
American Refugee  
American Siege  
Arctic Void  
Belfast  
Black Widow  
Cry Macho  
Halloween Kills  
Jungle Cruise  
The Last Duel  
The Many Saints of Newark

National Champions  
No Time to Die  
Old Henry  
Ron's Gone Wrong  
Shang-Chi and the Legend of the Ten Rings  
Shattered  
Stillwater  
The Surprise Visit  
Venom: Let There Be Carnage

**23**

American Refugee  
American Siege  
Arctic Void  
Halloween Kills  
The Many Saints of Newark

Ron's Gone Wrong  
Shattered  
Stillwater  
The Surprise Visit  
Venom: Let There Be Carnage  
Warhunt

**24**

American Siege  
Arctic Void  
Belfast  
Cry Macho  
Jungle Cruise  
The Last Duel

National Champions  
No Time to Die  
Ron's Gone Wrong  
Shattered  
Stillwater  
The Surprise Visit  
Warhunt

**25**

The Addams Family 2  
American Siege  
Arctic Void  
Black Widow  
Cry Macho  
**Dune**  
Halloween Kills  
**A House on the Bayou**  
Jungle Cruise  
The Last Duel

The Many Saints of Newark  
No Time to Die  
Old Henry  
Ron's Gone Wrong  
Shang-Chi and the Legend of the Ten Rings  
Stillwater  
Venom: Let There Be Carnage  
Warhunt  
Wrath of Man

**30**

Arctic Void  
Black Widow  
Cry Macho  
Dune  
Halloween Kills  
A House on the Bayou

Jungle Cruise  
The Last Duel  
No Time to Die  
The Requin  
Ron's Gone Wrong  
Stillwater  
Warhunt

**31**

American Siege  
Arctic Void  
Black Widow  
Cry Macho  
Dune  
Jungle Cruise

The Last Duel  
No Time to Die  
The Requin  
Ron's Gone Wrong  
Stillwater  
Warhunt  
Wrath of Man



WED.		THURS.		FRI.		SAT.							
				<p><b>1</b></p> <div><div><div>The Addams Family 2</div><div>American Refugee</div><div>Belfast</div><div>Black Widow</div><div>Copshop</div><div>Cruella</div><div>Cry Macho</div><div>Deadlock</div><div>East of the Mountains</div><div>Fortress</div></div><div><div>The French Dispatch</div><div>Jungle Cruise</div><div>The Last Duel</div><div>Megaboa</div><div>National Champions</div><div>No Time to Die</div><div>Shang-Chi and the Legend of the Ten Rings</div><div>Stillwater</div><div>Venom: Let There Be Carnage</div></div></div>		<p><b>5</b></p> <div><div><div>The Addams Family 2</div><div>American Refugee</div><div>Antlers</div><div>Clifford the Big Red Dog</div><div>Copshop</div><div>Cruella</div><div>Cry Macho</div><div>Deadlock</div><div>Fortress</div><div>The French Dispatch</div></div><div><div>Jungle Cruise</div><div>The Last Duel</div><div>The Many Saints of Newark</div><div>Megaboa</div><div>A Mouthful of Air</div><div>National Champions</div><div>No Time to Die</div><div>Shang-Chi and the Legend of the Ten Rings</div><div>Venom: Let There Be Carnage</div></div></div>		<p><b>6</b></p> <div><div><div>The Addams Family 2</div><div>American Refugee</div><div>Antlers</div><div>Clifford the Big Red Dog</div><div>Cruella</div><div>Cry Macho</div><div>Deadlock</div><div>Fortress</div><div>The French Dispatch</div><div>The Last Duel</div></div><div><div>The Many Saints of Newark</div><div>Megaboa</div><div>A Mouthful of Air</div><div>National Champions</div><div>No Time to Die</div><div>Shang-Chi and the Legend of the Ten Rings</div><div>Stillwater</div><div>Venom: Let There Be Carnage</div></div></div>		<p><b>7</b></p> <div><div><div>The Addams Family 2</div><div>American Refugee</div><div>American Siege</div><div>Antlers</div><div>Clifford the Big Red Dog</div><div>The Commando</div><div>Cruella</div><div>Cry Macho</div><div>Fortress</div><div>The French Dispatch</div></div><div><div>Jungle Cruise</div><div>The Last Duel</div><div>The Many Saints of Newark</div><div>Megaboa</div><div>A Mouthful of Air</div><div>National Champions</div><div>No Time to Die</div><div>Ron's Gone Wrong</div><div>See for Me</div><div>Stillwater</div><div>Venom: Let There Be Carnage</div></div></div>		<p><b>8</b></p> <div><div><div>American Refugee</div><div>American Siege</div><div>Antlers</div><div>Clifford the Big Red Dog</div><div>The Commando</div><div>Cruella</div><div>Cry Macho</div><div>Fortress</div><div>The French Dispatch</div><div>Jungle Cruise</div><div>The Last Duel</div></div><div><div>The Many Saints of Newark</div><div>A Mouthful of Air</div><div>National Champions</div><div>No Time to Die</div><div>Ron's Gone Wrong</div><div>See for Me</div><div>Shang-Chi and the Legend of the Ten Rings</div><div>Stillwater</div><div>Venom: Let There Be Carnage</div></div></div>	
<p><b>12</b></p> <div><div><div>The Addams Family 2</div><div>American Siege</div><div>Black Widow</div><div>Clifford the Big Red Dog</div><div>The Commando</div><div>Cruella</div><div>Cry Macho</div><div>Deadlock</div><div>Fortress</div><div>Halloween Kills</div><div>Jungle Cruise</div></div><div><div>The Last Duel</div><div>The Many Saints of Newark</div><div>National Champions</div><div>No Time to Die</div><div>Ron's Gone Wrong</div><div>See for Me</div><div>Shang-Chi and the Legend of the Ten Rings</div><div>Stillwater</div><div>Venom: Let There Be Carnage</div></div></div>		<p><b>13</b></p> <div><div><div>The Addams Family 2</div><div>American Siege</div><div>Black Widow</div><div>Clifford the Big Red Dog</div><div>The Commando</div><div>Cruella</div><div>Cry Macho</div><div>Deadlock</div><div>Fortress</div><div>Halloween Kills</div><div>Jungle Cruise</div></div><div><div>The Last Duel</div><div>The Many Saints of Newark</div><div>National Champions</div><div>No Time to Die</div><div>Ron's Gone Wrong</div><div>See for Me</div><div>Shang-Chi and the Legend of the Ten Rings</div><div>Stillwater</div><div>Venom: Let There Be Carnage</div></div></div>		<p><b>14</b></p> <div><div><div>The Addams Family 2</div><div>American Siege</div><div>Arctic Void</div><div>Black Widow</div><div>Clifford the Big Red Dog</div><div>The Commando</div><div>Cruella</div><div>Cry Macho</div><div>Halloween Kills</div><div>Jungle Cruise</div><div>The Last Duel</div></div><div><div>The Many Saints of Newark</div><div>National Champions</div><div>No Time to Die</div><div>Ron's Gone Wrong</div><div>See for Me</div><div>Shang-Chi and the Legend of the Ten Rings</div><div>Shattered</div><div>The Surprise Visit</div><div>Venom: Let There Be Carnage</div></div></div>		<p><b>15</b></p> <div><div><div>The Addams Family 2</div><div>American Siege</div><div>Arctic Void</div><div>Black Widow</div><div>Clifford the Big Red Dog</div><div>The Commando</div><div>Cruella</div><div>Cry Macho</div><div>Halloween Kills</div><div>Jungle Cruise</div><div>The Last Duel</div></div><div><div>The Many Saints of Newark</div><div>National Champions</div><div>No Time to Die</div><div>Ron's Gone Wrong</div><div>See for Me</div><div>Shang-Chi and the Legend of the Ten Rings</div><div>Shattered</div><div>The Surprise Visit</div><div>Venom: Let There Be Carnage</div></div></div>							
<p><b>19</b></p> <div><div><div>The Addams Family 2</div><div>American Refugee</div><div>American Siege</div><div>Arctic Void</div><div>Belfast</div><div>Cry Macho</div><div>Halloween Kills</div><div>Jungle Cruise</div><div>The Last Duel</div><div>The Many Saints of Newark</div></div><div><div>National Champions</div><div>No Time to Die</div><div>Old Henry</div><div>Ron's Gone Wrong</div><div>Shang-Chi and the Legend of the Ten Rings</div><div>Shattered</div><div>Stillwater</div><div>The Surprise Visit</div><div>Venom: Let There Be Carnage</div></div></div>		<p><b>20</b></p> <div><div><div>The Addams Family 2</div><div>American Refugee</div><div>American Siege</div><div>Arctic Void</div><div>Belfast</div><div>Cry Macho</div><div>Halloween Kills</div><div>Jungle Cruise</div><div>The Last Duel</div><div>The Many Saints of Newark</div></div><div><div>National Champions</div><div>No Time to Die</div><div>Old Henry</div><div>Ron's Gone Wrong</div><div>Shang-Chi and the Legend of the Ten Rings</div><div>Shattered</div><div>Stillwater</div><div>The Surprise Visit</div><div>Venom: Let There Be Carnage</div></div></div>		<p><b>21</b></p> <div><div><div>The Addams Family 2</div><div>American Refugee</div><div>American Siege</div><div>Arctic Void</div><div>Belfast</div><div>Cry Macho</div><div>Halloween Kills</div><div>Jungle Cruise</div><div>The Last Duel</div><div>The Many Saints of Newark</div></div><div><div>National Champions</div><div>No Time to Die</div><div>Ron's Gone Wrong</div><div>Shang-Chi and the Legend of the Ten Rings</div><div>Shattered</div><div>Stillwater</div><div>The Surprise Visit</div><div>Venom: Let There Be Carnage</div><div>Warhunt</div></div></div>		<p><b>22</b></p> <div><div><div>The Addams Family 2</div><div>American Refugee</div><div>American Siege</div><div>Arctic Void</div><div>Belfast</div><div>Cry Macho</div><div>Halloween Kills</div><div>Jungle Cruise</div><div>The Last Duel</div><div>The Many Saints of Newark</div></div><div><div>National Champions</div><div>No Time to Die</div><div>Ron's Gone Wrong</div><div>Shang-Chi and the Legend of the Ten Rings</div><div>Shattered</div><div>Stillwater</div><div>The Surprise Visit</div><div>Venom: Let There Be Carnage</div><div>Warhunt</div></div></div>							
<p><b>26</b></p> <div><div><div>The Addams Family 2</div><div>American Siege</div><div>Arctic Void</div><div>Black Widow</div><div>Cry Macho</div><div>Dune</div><div>Halloween Kills</div><div>A House on the Bayou</div><div>Jungle Cruise</div><div>The Last Duel</div></div><div><div>The Many Saints of Newark</div><div>No Time to Die</div><div>Old Henry</div><div>Ron's Gone Wrong</div><div>Shang-Chi and the Legend of the Ten Rings</div><div>Stillwater</div><div>Venom: Let There Be Carnage</div><div>Warhunt</div><div>Wrath of Man</div></div></div>		<p><b>27</b></p> <div><div><div>The Addams Family 2</div><div>American Siege</div><div>Arctic Void</div><div>Black Widow</div><div>Cry Macho</div><div>Dune</div><div>Halloween Kills</div><div>A House on the Bayou</div><div>Jungle Cruise</div><div>The Last Duel</div></div><div><div>The Many Saints of Newark</div><div>No Time to Die</div><div>Old Henry</div><div>Ron's Gone Wrong</div><div>Shang-Chi and the Legend of the Ten Rings</div><div>Stillwater</div><div>Venom: Let There Be Carnage</div><div>Warhunt</div><div>Wrath of Man</div></div></div>		<p><b>28</b></p> <div><div><div>The Addams Family 2</div><div>American Siege</div><div>Arctic Void</div><div>Black Widow</div><div>Cry Macho</div><div>Dune</div><div>Halloween Kills</div><div>A House on the Bayou</div><div>Jungle Cruise</div><div>The Last Duel</div></div><div><div>The Many Saints of Newark</div><div>No Time to Die</div><div>The Requin</div><div>Ron's Gone Wrong</div><div>Shang-Chi and the Legend of the Ten Rings</div><div>Stillwater</div><div>Venom: Let There Be Carnage</div><div>Warhunt</div><div>Wrath of Man</div></div></div>		<p><b>29</b></p> <div><div><div>The Addams Family 2</div><div>American Siege</div><div>Arctic Void</div><div>Black Widow</div><div>Cry Macho</div><div>Dune</div><div>Halloween Kills</div><div>A House on the Bayou</div><div>Jungle Cruise</div><div>The Last Duel</div></div><div><div>The Many Saints of Newark</div><div>No Time to Die</div><div>The Requin</div><div>Ron's Gone Wrong</div><div>Shang-Chi and the Legend of the Ten Rings</div><div>Stillwater</div><div>Venom: Let There Be Carnage</div><div>Warhunt</div><div>Wrath of Man</div></div></div>							

Halloween Kills: © 2021 Universal Pictures. Ron's Gone Wrong: © 2021 20th Century Studios. Clifford the Big Red Dog: © 2021 Paramount Pictures Corporation. All rights reserved.



Credit: Universal Pictures

## HALLOWEEN KILLS

### Halloween Kills

(Horror) Laurie Strode thought she escaped Michael Myers after laying a trap for him. But Michael does not go away quietly and is back on the loose searching for more victims. With an entire town zeroing in on the masked killer, can they finally rid themselves of the nightmare that is Michael, or will this just be the beginning? *Jamie Lee Curtis, Judy Greer, Andi Matichak* (R, 1:45)

**Premieres Jan. 11**



**Make It A Movie Night!** Continue the journey of Michael Myers and Laurie Strode.



© 2021 20th Century Studios.

## RON'S GONE WRONG

### Ron's Gone Wrong

(Comedy) Barney lives in a socially connected world where everyone has a B\*bot, a robot that helps with making friends. One problem: Barney's bot Ron has code that causes it to be a unique model that gets everyone in trouble. *Voices of Jack Dylan Grazer, Zach Galifianakis, Ed Helms* (PG, 1:47)

**Premieres Jan. 6**



**Make It A Movie Night!** Cute, funny, family-friendly fun.



© 2020 Searchlight Pictures.

### Antlers

(Horror) In a small Oregon town, a myth seems to have become reality for an enigmatic student who has terrifying encounters with a monster who has stirred up the residents. Is it imagined or something more sinister and real? *Keri Russell, Jesse Plemons, Jeremy T. Thomas* (R, 1:39)

**Premieres Jan. 4**



© 2021 Paramount Pictures.

### Clifford the Big Red Dog

(Family) A tiny puppy stays with a little girl for one night, but will grow depending on how much she loves him. One young girl's love is enormous and that leads to a 10-foot big red dog. The classic children's story comes to life in a big way. *Darby Camp, Jack Whitehall, John Cleese* (PG, 1:36)

**Premieres Jan. 4**





# Make It A Movie Night!

## CRITIC PICK OF THE MONTH



### Make It A Movie Night!

Explode your senses with the visual and audio experience that is present in this iteration of the classic science-fiction story. There are moments of *Dune* that are a bit plodding, but this film grabs viewers and immerses them in glorious and unforgettable worlds. Turn the lights off and turn up the volume while you experience this on the biggest screen in your house. Timothée Chalamet, Rebecca Ferguson, Oscar Isaac, Josh Brolin, Jason Momoa and others walk us through this offering and add star power to the visuals.

It's my pick of the month.

*Paul Hall is a nationally syndicated film critic and member of the Critics Choice Association (CCA).*

## Dune

(Sci Fi) This mythic and emotionally charged epic hero's journey follows a gifted young man born into a great destiny, who must travel to the most dangerous planet in the universe to ensure the future of his people. *Timothée Chalamet, Rebecca Ferguson, Oscar Isaac, Josh Brolin, Jason Momoa* (PG-13, 2:35) **Premieres Jan. 25**

## On Demand

- **Previews** CH. 500
- **Movies** CH. 501-535

## Ordering A Movie Is Easy!

### By Remote:

Keep your receiver phone line or internet connected at all times.

1. Go to Channels 500-535.
2. Find your movie and select "Rent Now."

### By Phone:

Call toll-free 1-877-DISH  
PPV (347-4778)

### By Text Message:

Text MOVIE to 34741 and  
follow the text instructions.

### By Internet:

Log on to  
**mydish.com/movies**  
Phone line or broadband  
internet connection not required  
if ordering online or by phone.

### By MyDISH App:

Download the MyDISH App and  
select "Movies&Events" on the  
SERVICES tab.

## DISH On Demand

Channels 500-535

- Standard and  
High Definition:  
\$5.99 Each
- Same Day as Theatrical:  
\$6.99 Each\*

For more information about  
HD programming on DISH, or  
to find out how to upgrade to an  
HD-capable receiver, call  
1-800-333-DISH (3474).



## Last Night in Soho

(Drama) Director Edgar Wright gives us a tale that transports viewers to the 1960s as Eloise, an aspiring fashion designer in the present, is able to go back and see things that happened years earlier. What happens when your dreams are something more? *Thomasin McKenzie, Anna Taylor-Joy, Matt Smith* (R, 1:56) **Premieres Jan. 18**



**Make It A Movie Night!** Director Edgar Wright always delivers, and this is no exception.

Credit: HBO Max/Warner Bros

© 2021 Focus Features

## SHOWING THIS MONTH

### Action

American Siege	No Time to Die
Black Widow	Shang-Chi and the Legend of the Ten Rings
Copshop	
Deadlock	Venom: Let There Be Carnage
Fortress	Warhunt
Jungle Cruise	Wrath of Man
The Last Duel	
Megaboa	

### Comedy

Cruella	Ron's Gone Wrong
The French Dispatch	

### Crime Drama

The Many Saints of Newark	
---------------------------	--

### Drama

Belfast	Last Night in Soho
Cry Macho	A Mouthful of Air
East of the Mountains	National Champions
	Stillwater

### Family

The Addams Family 2	Clifford the Big Red Dog
---------------------	--------------------------

### Horror

American Refugee	A House on the Bayou
Antlers	
Halloween Kills	The Requin

### Sci Fi

Dune	
------	--

### Suspense

Arctic Void	Shattered
The Commando	The Surprise Visit
See for Me	

### Western

Old Henry	
-----------	--



### The Many Saints of Newark

(Crime Drama) The highly anticipated prequel story of HBO's landmark crime drama *The Sopranos* has Michael Gandolfini stepping into his father's (the late James Gandolfini) role as a young Anthony, who is navigating the streets and mobsters of New Jersey. *Also stars Vera Farmiga, Ray Liotta, Alessandro Nivola, Leslie Odom Jr., Jon Bernthal* (R, 2:00) **Premieres Jan. 4**

© 2021 Warner Bros. Entertainment Inc. All Rights Reserved.



### National Champions

(Drama) With a national football championship looming, a pair of star athletes set out to take on the power structure within amateur athletics. One is bound for professional football, and one will end his playing career after the game, but both join together to help their fellow athletes. Can the little guys take on the system, and will their efforts hurt or help their fellow athletes? *Stephen James, J.K. Simmons, Alexander Ludwig* (R, 1:56) **Available Now**

© 2021 SYFY Entertainment



### Belfast

(Drama) Writer/director Kenneth Branagh takes viewers inside a working-class Belfast family during the late 1960s. As the world was changing around them and friends were becoming enemies, a young boy and his Ma and Pa try to decide if they should stay in Belfast or leave the city they dearly love for an unknown future. *Caitriona Balfe, Judi Dench, Jamie Dornan* (PG-13, 1:38) **Available Now**

© 2021 Focus Features, LLC



## On Demand

- **Previews** CH. 500
- **Movies** CH. 501-535



© 2020 DIALOG, LLC AND MGM. All Rights Reserved.

### No Time to Die

(Action) James Bond is back and enjoying life after active service in sunny Jamaica. That time is unexpectedly short-lived as Bond is fighting an old nemesis and the government by whom he was employed. With a new weapon and destruction of a vast segment of the population at stake, will Bond be able to stop things in time? *Daniel Craig, Rami Malek, Léa Seydoux* (PG-13, 2:43) **Available Now**



© 2021 Walt Disney Studios Motion Pictures.

### The Last Duel

(Action) Matt Damon and Ben Affleck reunite in this historical tale of betrayal and vengeance set against the brutality of 14th century France. Ridley Scott directs this thought-provoking, thrilling drama. *Also stars Jodie Comer, Adam Driver* (R, 2:32) **Available Now**



© 2021 CTRMG, Inc. All rights reserved. Courtesy of Sony Pictures.

### Venom: Let There Be Carnage

(Action) Eddie Brock heads to talk to serial killer Cletus Kasady when the killer asks for him by name. With the goal of digging for information, Venom emerges and collects data that may have slipped by Eddie and leaves them both in danger. *Tom Hardy, Woody Harrelson, Naomie Harris* (PG-13, 1:37) **Available Now**

## ADULTS ONLY.



### Order On Channel 490 or 499

Adult Showcase offers EIGHT of the best adult channels, including XTSY, Hustler TV, Hustler HD, Reality Kings TV, TEN, Vivid, BraZZers and Real Extreme for up to three consecutive hours for only \$17.99.



PLAYBOY TV

#### Channel 489

4 Hours for \$13.99  
X



#### Channel 491

90 Minutes for \$13.99  
XX1/2



#### Channel 492

90 Minutes for \$13.99  
XX1/2



#### Channel 493

90 Minutes for \$13.99  
XX1/2



#### Channel 494

90 Minutes for \$13.99  
XX1/2



#### Channel 495

90 Minutes for \$13.99  
XX1/2



#### Channel 496

90 Minutes for \$13.99  
XX1/2



#### Channel 497

90 Minutes for \$13.99  
XX1/2



#### Channel 498

90 Minutes for \$13.99  
XXX

### Adult Programming May Be Found On Channels 488-499.

#### To order:

> Use your remote

> Order online at [mydish.com/adult](http://mydish.com/adult)

> Call 1-877-DISH PPV (347-4778)

#### SETTING PARENTAL CONTROLS:

For Hopper, Joey and Wally:

Menu > Settings > Parental Controls >

Hide Adult Programs.

For ViP: Menu > Locks > Hide Adult.

Movies, prices & schedules subject to change. Some channels require a DISH 500.

Must be at least 18 years or older to order. Blackout restrictions apply.

© 2022 Reality Kings, LLC, All Rights Reserved. © 2022 Spice Entertainment Inc.

HBO



## Euphoria Jan. 9

The drama series returns for an eight-episode second season. Amid the intertwining lives in the town of East Highland, 17-year-old Rue must find hope while balancing the pressures of love, loss and addiction. *Zendaya, Hunter Schafer, Nika King* (TV-MA)



## The Righteous Gemstones Jan. 9

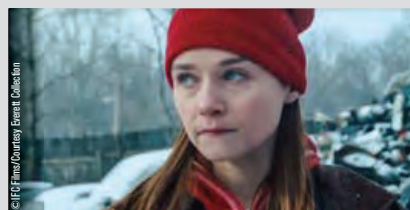
The famous Gemstone televangelist family is threatened by outsiders who wish to destroy their empire as the comedy returns for a nine-episode Season 2. *Danny McBride, John Goodman, Edi Patterson* (TV-MA)



## The Suicide Squad Jan. 15

Task Force X is back on the job, and Harley Quinn and Bloodsport lead the criminal supervillains in an assault on a remote island. *Viola Davis, Margot Robbie, Idris Elba* (R)

SHOWTIME



## Holler Jan. 6

Hoping to pay for college, a determined young woman lands a dangerous job working in a scrap metal yard during a brutal winter. She soon finds herself torn between a promising future and the family she would leave behind. *Jessica Barden, Pamela Adlon, Gus Halper* (R)



## Ray Donovan: The Movie Jan. 14

Fans of the series will get some closure in this film. Picking up where Season 7 left off, Mickey is in the wind and Ray is determined to find him before he can cause any more carnage. *Liev Schreiber, Eddie Marsan, Dash Mihok* (TV-MA)



## Midsommar Jan. 15

A trip to a summer festival in rural Sweden turns increasingly violent and a bit bizarre. *Florence Pugh, Jack Reynor, William Jackson Harper* (R)

STARZ



## Naked Singularity Jan. 1

A New York City public defender gets pushed to fight back against the system he has tried so hard to protect, and he works to pull off a high-stakes heist with a little help from friends. *John Boyega, Olivia Cooke, Bill Skarsgård* (R)



## I Carry You With Me Jan. 5

Two Mexican men maintain a romantic relationship that spans decades. *Armando Espitia, Christian Vázquez, Michelle Rodríguez* (R)



## Act of Valor Jan. 8

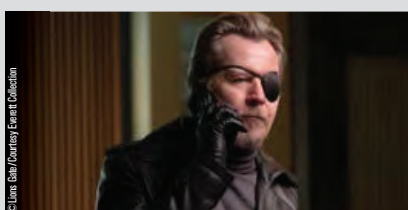
A cast of real-life, active-duty Navy SEALs populates this action extravaganza about an elite team of SEALs on a covert mission to recover a kidnapped CIA agent. *Roselyn Sanchez, Jason Cottle, Alex Veadov* (R)

epix



## Stonewall Jan. 7

Director Roland Emmerich presents this drama about a young man's political awakening during the days leading up to the 1969 Stonewall Riots in New York City. *Jeremy Irvine, Jonny Beauchamp, Joey King* (R)



## The Courier Jan. 12

A London courier unknowingly delivers a package containing a weapon intended to kill the lone witness who saw a wealthy crime boss commit murder. *Olga Kurylenko, Gary Oldman, Amit Shah* (R)



## Britannia Jan. 16

Season 3 sees a radical transformation in Cait's journey as the Chosen One with a decision that will tie her to the future of her war-torn people and their ravaged land. *Eleanor Worthington-Cox, David Morrissey, Sophie Okonedo* (TV-MA)





### Somebody Somewhere Jan. 16

This comedy follows Sam, a Kansan struggling to fit the mold. Sam finds joy in singing, which leads her on a journey to discover herself and a community of outsiders. *Bridget Everett, Jeff Hiller, Mary Catherine Garrison* (TV-MA)



### Yellowjackets Jan. 16

Season 1 of this drama about high school girls soccer players who survive a plane crash in the wilderness and their lives 25 years later concludes with the episode "Sic Transit Gloria Mundi." *Juliette Lewis, Melanie Lynskey, Christina Ricci* (TV-MA)



### Escape Room: Tournament of Champions Jan. 20

Former champions who have escaped other rooms around the country with their life are reunited in New York to play yet another game. *Taylor Russell, Logan Miller, Deborah Ann Woll* (PG-13)



### Snake Eyes: G.I. Joe Origins Jan. 22

Snake Eyes makes a decision that impacts Tommy, a powerful man. Tommy welcomes Snake Eyes to his home and trains him, but there is always more than meets the eye. *Henry Golding, Andrew Koji, Haruka Abe* (PG-13)



### The Gilded Age Jan. 24

From *Downton Abbey* creator Julian Fellowes comes this period drama set in 1882 New York City, where new technological advances, new ideas and new money are challenging the established social order. *Louisa Jacobson, Carrie Coon, Morgan Spector* (TV-MA)



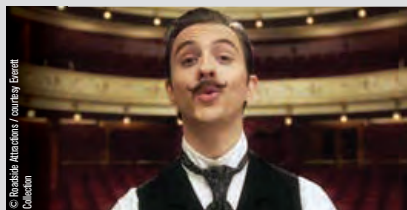
### Billions Jan. 23

In Season 6 of the drama, Michael Prince is now in charge, Chuck must develop a new strategy and all the players must sharpen their weapons and look for new alliances in order to survive. *Paul Giamatti, Corey Stoll, Maggie Siff* (TV-MA)



### The King's Speech Jan. 27

This enthralling historical drama tells the story of King George VI, father of Queen Elizabeth II, who enlisted the help of an unorthodox speech therapist to help him deal with his crippling stutter. *Colin Firth, Geoffrey Rush, Helena Bonham Carter* (R)



### Cyrano, My Love Jan. 26


This historical dramedy is the story of how French poet Edmond Rostand, penniless and desperate, scrambles to write what would become his most famous play, *Cyrano de Bergerac*, in 1897. *Thomas Soliv  res, Olivier Gourmet, Mathilde Seigner* (R)


## SHOWING THIS MONTH

HBO	Chaplin Collide Euphoria (Season Premiere) The Eyes of Tammy Faye The Gilded Age (New Series) Gone Baby Gone High-Rise Hitman's Wife's Bodyguard The Last Five Years Last Night Memento Next Nobody	Peacemaker (Episode 1) Profile Real Steel Real Time With Bill Maher (Season Premiere) Reminiscence The Righteous Gemstones (Season Premiere) Somebody Somewhere (New Series) Spare Parts Stealing Harvard The Suicide Squad
	Billions (Season Premiere) The Bling Ring Dexter: New Blood (Season Finale) The Dry Eight Crazy Nights Ema A Ghost Story Gladiator Holler The Manchurian Candidate Menashe	Midsommar Monday Philadelphia Pulp Fiction Ray Donovan: The Movie (Original Film) Scrooged Serpico Titanic Total Recall Walking and Talking Yellowjackets (Season Finale)
STARZ	Act of Valor Best Sellers The Change-Up Escape Room: Tournament of Champions Going the Distance The Hurt Locker I Carry You With Me	Inglorious Basterds The King's Speech Mr. & Mrs. Smith Munich Naked Singularity Paul The Show Tower Heist Youth in Oregon
	American Refugee Britannia (Season Premiere) Breaking News in Yuba County The Courier Cyrano, My Love The Deep House Georgetown Gully Horizon Line A House on the Bayou	How It Ends Jungleland Love and Monsters The Marksman Snake Eyes: G.I. Joe Origins The Space Between Spontaneous Stonewall Summer Days, Summer Nights Wrath of Man

# CHANNEL PACK DIRECTORY




## America's Top 120 | 190 + Channels

A&E <b>HD</b>	118	Free Speech TV (FSTV)	9415
AMC <b>HD</b>	131	Fuse <b>HD</b>	164
Angel One <b>HD</b>	262	FX <b>HD</b> <b>SAP</b>	136
Animal Planet <b>HD</b>	184	FXX <b>HD</b>	125
AXS TV <b>HD</b>	167	GAC Living	248
BabyFirstTV <b>SAP</b>	823	Gem Shopping Network	229
Beauty iQ	73	getTV	373
Believers' Voice of Victory Network	265	GRIT <b>HD</b>	217
BOUNCE	359	Heroes & Icons	293
Bravo <b>HD</b>	129	HGTV <b>HD</b>	112
BUZZR	245	Hillsong Channel	258
BYUTV	9403	History <b>HD</b>	120
Cartoon Network (E) <b>HD</b> <b>SAP</b>	176	HITN	843
Cartoon Network (W)	177	HLN	202
CGTN Español	884	Hopper Insider	103
CGTNN	279	HSN <b>HD</b>	74
Christian Television Network	267	HSN2	226
CMT <b>HD</b>	166	IFC <b>HD</b>	133
CNBC <b>HD</b>	208	Impact Network	268
CNN <b>HD</b> <b>SAP</b>	200	In Country Television	230
Comedy Central <b>HD</b>	107	INSP	259
Comet <b>HD</b> Only	289	Investigation Discovery <b>HD</b>	192
The Cowboy Channel	232	ION	250
Cozi	253	Jewelry Television	83/227
CRAFT	221	Justice Central	240
C-SPAN <b>SAP</b>	210	Kids & Teens Television (KTV)	264
C-SPAN2	211	LAFF TV	237
Daystar	263	Lifetime <b>HD</b> <b>SAP</b>	108
DEAL	95	Link TV	9410
Discovery Channel <b>HD</b>	182	Local Channels <b>HD</b> (ABC, CBS, FOX, NBC)	2-70
DISH Multi-Channel View	100	Mercury TV (MALL)	86/220
DISH Music Channels	923-946	MeTV2	247
DISH Studio <b>HD</b>	102	MLB Extra Innings	565
Disney Channel (E) <b>HD</b>	172	MotorTrend Network <b>HD</b>	246
Disney Channel (W)	173	MSNBC <b>HD</b>	209
E! Entertainment Television <b>HD</b>	114	MTV <b>HD</b>	160
Enlace	9411	MTV Live <b>HD</b>	369
EPIC	85	MTV2	161
ESPN <b>HD</b>	140	NASA	286
ESPN2 <b>HD</b>	143	National Geographic	197
ESPNEWS <b>HD</b>	142	Newsmax <b>HD</b>	216
ESPNU <b>HD</b>	141	NewsNation <b>HD</b>	239
ESPN Alternate	144-145	NEWSY	283
EVINE Live	134	NHL Center Ice 	475
EWTV	261	Nick/Nick at Nite (E) <b>HD</b> <b>SAP</b>	170
Faith USA	269	Nick/Nick at Nite (W)	171
Family Entertainment TV	82	On Demand Guide	500
FM	243	Paramount Network <b>HD</b>	241
Folk TV	218	Pop	117
Food Network <b>HD</b>	110	Pursuit	393
FOX Business <b>HD</b>	206	QVC <b>HD</b> <b>SAP</b>	137
FOX News Channel <b>HD</b>	205	QVC2 <b>HD</b>	255
FOX Sports 1 <b>HD</b>	150		
Freeform <b>HD</b>	180		

Real	94/223
RECTV	284
REELZChannel <b>HD</b> <b>SAP</b>	299
Russia Today	280
Sale <b>SAP</b>	225
Shepherd's Chapel Network	256
SiriusXM 	99
SiriusXM	6002-6096
SonLife Broadcasting <b>SAP</b>	257
Syfy <b>HD</b>	122
TBN	260
TBS <b>HD</b> <b>SAP</b>	139
3 Angels Broadcasting Network	9393
TLC <b>HD</b>	183
TNT <b>HD</b> <b>SAP</b>	138
Travel Channel <b>HD</b>	196
truTV <b>HD</b>	242
TV Games Network	399
TV Land <b>HD</b>	106
TVG2	398
USA <b>HD</b> <b>SAP</b>	105
V-ME <b>HD</b>	846
VH1 <b>HD</b>	162
WE tv <b>HD</b>	128
The Weather Channel <b>HD</b>	214
WeatherNation <b>HD</b>	215
YouTV	228
Z Living <b>HD</b> Only	191


## America's Top 120 PLUS 190 + Channels

AT 120 Plus includes most networks from  
AT 120, plus these additional channels:

Big Ten Network  <b>HD</b>	405
Big Ten Network <b>HD</b>	410
FOX Sports 2 <b>HD</b>	149
Longhorn Network <b>HD</b> <sup>1</sup>	407
NFL Network <b>HD</b>	154
Pac-12 Network  <b>HD</b>	406
Pac-12 Network <b>HD</b>	409
SEC Network  <b>HD</b>	404
SEC Network <b>HD</b>	408
Tennis Channel <b>HD</b>	400
World Fishing Network	394

### KEY:

**HD** = Channels broadcast in SD and HD unless noted as (**HD** only)

 = Available on all Hopper, Joey, and Wally receivers. Select the "+" icon to expand all channels.

**SAP** = Second Audio Program (Spanish)

<sup>1</sup> = Only in HD for live events

<sup>2</sup> = MeTV channel numbers vary depending on local market

**(SiriusXM)**  
SATELLITE RADIO

### POP

Sirius Hits 1	99-2	6002
'50s on 5	99-5	6005
'60s on 6	99-6	6006
'70s on 7	99-7	6007
'80s on 8	99-8	6008
'90s on 9	99-9	6009
Coffee House	99-14	6014
The Pulse	99-15	6015
The Blend	99-16	6016
The Beatles	99-18	6018

### ROCK

Elvis Radio	99-19	6019
E Street Radio	99-20	6020
Underground Garage	99-21	6021
Pearl Jam Radio	99-22	6022
The Grateful Dead	99-23	6023
Radio Margaritaville	99-24	6024
Classic Rewind	99-25	6025
Classic Vinyl	99-26	6026
Deep Tracks	99-27	6027
Spectrum	99-28	6028
Jam On	99-29	6029
The Loft	99-30	6030
The Bridge	99-32	6032
1st Wave	99-33	6033
Lithium	99-34	6034
Sirius XMU	99-35	6035
Alt Nation	99-36	6036
Octane	99-37	6037
Boneyard	99-38	6038
Hair Nation	99-39	6039
Liquid Metal	99-40	6040
Faction	99-41	6041
The Joint	99-42	6042

### HIP-HOP/R&B

Starting On Channel ...	99-45	6045
-------------------------	-------	------

### DANCE/ELECTRONIC

Starting On Channel ...	99-53	6053
-------------------------	-------	------

### COUNTRY

The Highway	99-56	6056
Y2Kountry	99-57	6057
Prime Country	99-58	6058
Willie's Roadhouse	99-59	6059
Outlaw Country	99-60	6060
Bluegrass Junction	99-62	6062

### CHRISTIAN

Starting On Channel ...	99-63	6063
-------------------------	-------	------

### JAZZ/STANDARDS

Starting On Channel ...	99-66	6066
-------------------------	-------	------

### CLASSICAL

Starting On Channel ...	99-74	6074
-------------------------	-------	------

### LATIN/WORLD

Viva	99-91	6091
Aguila	99-94	6094
Caliente	99-95	6095

**PLUS SO MANY MORE!**



# America's Top 200 | 240 + Channels

A&E	118	E! Entertainment Television	114	Impact Network	268	Pursuit	393
AMC	131	Enlace	9411	In Country Television	230	QVC	137
Angel One	262	EPIC	85	INSP	259	QVC2	255
Animal Planet	184	ESPN	140	Investigation Discovery	192	Real	94/223
AXS TV	167	ESPN2	143	ION	250	RECTV	284
BabyFirstTV	823	ESPNEWS	142	Jewelry Television	83/227	REELZChannel	299
BBC America	135	ESPNU	141	Justice Central	240	RFD-TV	231
Beauty iQ	73	ESPN Alternate	144-145	Kids & Teens Television (KTV)	264	Russia Today	280
Believers' Voice of Victory Network	265	Estrella TV	852	LAFF TV	237	Sale	225
BET	124	EVINE Live	134	Lifetime	108	Science	193
Big Ten Network	405	EWTN	261	Link TV	9410	SEC Network	404
Big Ten Network	410	Faith USA	269	LMN	109	SEC Network	408
Boomerang	175	Family Entertainment TV	82	Local Channels  (ABC, CBS, FOX, NBC)	2-70	Shepherd's Chapel Network	256
BOUNCE	359	FM	243	<sup>1</sup> Longhorn Network	407	SiriusXM	99
Bravo	129	FOROtv	847	Magnolia Network	111	SiriusXM	6002-6096
BUZZR	245	Folk TV	218	Mercury TV (MALL)	86/220	SonLife Broadcasting	257
BYUTV	9403	Food Network	110	MeTV <sup>2</sup>	247	SundanceTV	126
Cartoon Network (E)	176	FOX Business	206	MLB Extra Innings	565	Syfy	122
Cartoon Network (W)	177	FOX News Channel	205	MLB Network	152/478	TBN	260
CBS Sports Network	158	FOX Sports 1	150	MotorTrend Network	246	TBS	139
CGTN Español	884	FOX Sports 2	149	MSNBC	209	TCM	132
CGTNN	279	Freeform	180	MTV	160	TeenNick	181
Christian Television Network	267	Free Speech TV (FSTV)	9415	MTV Live	369	Tennis Channel	400
CMT	166	Fuse	164	MTV2	161	3 Angels Broadcasting Network	9393
CNBC	208	FX	136	NASA	286	TLC	183
CNN	200	FXX	125	Nat Geo WILD	190	TNT	138
Comedy Central	107	FYI	119	National Geographic	197	Travel Channel	196
Comet	289	GAC Living	248	NBA TV	156	truTV	242
Cooking Channel	113	Galavision	273/833	Newsmax	216	TV Games Network	399
The Cowboy Channel	232	Game Show Network	116	NewsNation	239	TV Land	106
Cozi	253	Gem Shopping Network	229	NEWSY	283	TVG2	398
CRAFT	221	getTV	373	NFL Network	154	UniMas	271/830
C-SPAN	210	Golf Channel	401	NHL Center Ice	475	Univision (E)	270/827
C-SPAN2	211	GRIT	217	NHL Network	157	Univision (W)	828
Daystar	263	Hallmark Channel	185	Nick Jr.	169	Univision Deportes	397/856
DEAL	95	Hallmark Drama	186	Nick/Nick at Nite (E)   Nick/Nick at Nite (E)	170	Uplifting Entertainment	188
Discovery Channel	182	Hallmark Movies & Mysteries	187	Nick/Nick at Nite (W)	171	USA	105
Discovery Family	179	Heroes & Icons	293	Olympic Channel	389	V-ME	846
DISH Multi-Channel View	100	HGTV	112	On Demand Guide	500	VH1	162
DISH Music Channels	923-946	Hillsong Channel	258	Outdoor Channel	396	VICE	121
DISH Studio	102	History	120	OWN	189	WE tv	128
Disney Channel (E)	172	HITN	843	Oxygen	127	The Weather Channel	214
Disney Channel (W)	173	HLN	202	Pac-12 Network	406	WeatherNation	215
Disney Junior	168	Hopper Insider	103	Pac-12 Network	409	World Fishing Network	394
Disney XD	174	HSN	74	Paramount Network	241	YouTV	228
DPLCL	270/827	HSN2	226	Pop	117	Z Living	191
		IFC	133				

## America's Top 250 | 290 + Channels

A&E <b>HD</b>	118	Enlace	9411	Link TV	9410	SEC Network <b>HD</b>	408
AMC <b>HD</b>	131	EPIC	85	LMN <b>HD</b>	109	Shepherd's Chapel Network	256
<b>American Heroes Channel</b> <b>HD</b>	195	<b>EPIX Drive-In</b>	292	Local Channels <b>HD</b> (ABC, CBS, FOX, NBC)	2-70	SiriusXM	99
Angel One <b>HD</b>	262	ESPN <b>HD</b>	140	<b>Logo</b> <b>HD</b>	254	SiriusXM	6002-6096
Animal Planet <b>HD</b>	184	ESPN2 <b>HD</b>	143	Longhorn Network <b>HD</b> <sup>1</sup>	407	<b>Smithsonian Channel</b> <b>HD</b>	367
AXS TV <b>HD</b>	167	ESPNEWS <b>HD</b>	142	Magnolia Network <b>HD</b>	111	SonLife Broadcasting Network <b>SAP</b>	257
BabyFirstTV <b>SAP</b>	823	ESPNU <b>HD</b>	141	Mercury TV (MALL)	86/220	<b>Sportsman Channel</b> <b>HD</b>	395
BBC America <b>HD</b>	135	ESPN Alternate	144-145	MeTV <sup>2</sup>	247	<b>STARZ Encore (W)</b> <b>SAP</b>	341
Beauty iQ	73	Estrella TV	852	MLB Extra Innings	565	<b>STARZ Encore Action</b> <b>SAP</b>	343
<b>beIN SPORTS</b> <b>HD</b> <b>SAP</b>	392/781	EVINE Live	134	MLB Network <b>HD</b>	152/478	<b>STARZ Encore Black</b>	345
beIN Sports in Espanol <b>HD</b> <b>SAP</b>	873	EWTN	261	MotorTrend Network <b>HD</b>	246	<b>STARZ Encore Classic</b>	346
Believers' Voice of Victory Network	265	Faith USA	269	<b>The Movie Channel (W)</b> <b>SAP</b>	329	<b>STARZ Encore Family</b>	347
BET <b>HD</b>	124	Family Entertainment TV	82	<b>The Movie Channel Xtra (W)</b>	330	<b>STARZ Encore Suspense</b>	344
<b>BET Her</b> <b>HD</b> Only	251	FM	243	<b>MoviePlex</b>	377	<b>STARZ Encore Westerns</b>	342
Big Ten Network <b>HD</b>	405	Folk TV	218	MSNBC <b>HD</b>	209	SundanceTV <b>HD</b>	126
Big Ten Network <b>HD</b>	410	Food Network <b>HD</b>	110	MTV <b>HD</b>	160	Syfy <b>HD</b>	122
<b>TheBlaze</b>	212	FOX Business <b>HD</b>	206	<b>MTV Classic</b>	163	TBN	260
<b>Bloomberg Television</b> <b>HD</b>	203	FOX News Channel <b>HD</b>	205	MTV Live <b>HD</b>	369	TBS <b>HD</b> <b>SAP</b>	139
Boomerang <b>SAP</b>	175	FOX Sports 1 <b>HD</b>	150	MTV2	161	TCM <b>HD</b> <b>SAP</b>	132
BOUNCE	359	FOX Sports 2 <b>HD</b>	149	NASA	286	TeenNick	181
Bravo <b>HD</b>	129	Freeform <b>HD</b>	180	Nat Geo WILD <b>HD</b>	190	Tennis Channel <b>HD</b>	400
BUZZR	245	Free Speech TV (FSTV)	9415	National Geographic	197	3 Angels Broadcasting Network	9393
BYUTV	9403	Fuse <b>HD</b>	164	NBA TV <b>HD</b> <b>SAP</b>	156	TLC <b>HD</b>	183
Cartoon Network (E) <b>HD</b> <b>SAP</b>	176	Fusion	244	<b>NBC Universo</b> <b>HD</b>	838	TNT <b>HD</b> <b>SAP</b>	138
Cartoon Network (W)	177	FX <b>HD</b> <b>SAP</b>	136	Newsmax <b>HD</b>	216	Travel Channel <b>HD</b>	196
CBS Sports Network <b>HD</b>	158	<b>FXM</b> <b>HD</b>	384	NewsNation <b>HD</b>	239	truTV <b>HD</b>	242
CGTN Español	884	FXX <b>HD</b>	125	NEWSY	283	TV Games Network	399
CGTNN	279	FYI <b>HD</b>	119	NFL Network <b>HD</b>	154	TV Land <b>HD</b>	106
Christian Television Network	267	<b>GAC Family</b> <b>HD</b>	165	NHL Center Ice	475	TVG2	398
CMT <b>HD</b>	166	GAC Living	248	NHL Network <b>HD</b>	157	UniMas <b>HD</b>	271/830
CNBC <b>HD</b>	208	Galavision <b>HD</b>	273/833	Nick/Nick at Nite (E) <b>HD</b> <b>SAP</b>	170	Univision (E) <b>HD</b>	270/827
CNN <b>HD</b> <b>SAP</b>	200	Game Show Network <b>HD</b>	116	Nick/Nick at Nite (W)	171	Univision (W)	828
Comedy Central <b>HD</b>	107	Gem Shopping Network	229	Nick Jr.	169	Univision Deportes <b>HD</b>	397/856
Comet <b>HD</b> Only	289	getTV	373	<b>Nicktoons</b>	178	Uplifting Entertainment	188
Cooking Channel <b>HD</b>	113	Golf Channel <b>HD</b>	401	Olympic Channel	389	USA <b>HD</b> <b>SAP</b>	105
<b>The Cowboy Channel</b>	232	GRIT <b>HD</b>	217	On Demand Guide	500	V-ME <b>HD</b>	846
Cozi	253	Hallmark Channel <b>HD</b>	185	Outdoor Channel <b>HD</b>	396	VH1 <b>HD</b>	162
CRAFT	221	Hallmark Drama	186	OWN <b>HD</b>	189	VICE <b>HD</b>	121
C-SPAN <b>SAP</b>	210	Hallmark Movies & Mysteries <b>HD</b>	187	Oxygen	127	WE tv <b>HD</b>	128
C-SPAN2	211	Heroes & Icons	293	Pac-12 Network <b>HD</b>	406	The Weather Channel <b>HD</b>	214
Daystar	263	HGTV <b>HD</b>	112	Pac-12 Network <b>HD</b>	409	WeatherNation <b>HD</b>	215
DEAL	95	Hillsong Channel	258	Paramount Network <b>HD</b>	241	World Fishing Network	394
<b>Destination America</b> <b>HD</b>	194	History <b>HD</b>	120	Pop	117	YouTV	228
Discovery Channel <b>HD</b>	182	HITN	843	Pursuit	393	Z Living <b>HD</b> Only	191
Discovery Family <b>HD</b>	179	HLN	202	QVC <b>HD</b> <b>SAP</b>	137		
DISH Multi-Channel View	100	Hopper Insider	103	QVC2 <b>HD</b>	255		
DISH Music Channels	923-946	HSN <b>HD</b>	74	Real	94/223		
DISH Studio <b>HD</b>	102	HSN2	226	RECTV	284		
Disney Channel (E) <b>HD</b>	172	IFC <b>HD</b>	133	REELZChannel <b>HD</b> <b>SAP</b>	299		
Disney Channel (W)	173	Impact Network	268	RFD-TV <b>HD</b>	231		
Disney Junior	168	In Country Television	230	Russia Today	280		
Disney XD <b>SAP</b>	174	INSP	259	Sale <b>SAP</b>	225		
DPLCL	270/827	Investigation Discovery <b>HD</b>	192	Science <b>HD</b>	193		
E! Entertainment TV <b>HD</b>	114	ION	250	SEC Network <b>HD</b>	404		
		Jewelry Television	83/227				
		Justice Central	240				
		Kids & Teens Television (KTV)	264				
		LAFF TV	237				
		Lifetime <b>HD</b> <b>SAP</b>	108				

## KEY:

**HD** = Channels broadcast in SD and HD unless noted as **(HD)** only

= Available on all Hopper, Joey, and Wally receivers. Select the "+" icon to expand all channels.

**SAP** = Second Audio Program (Spanish)

1 = Only in HD for live events

2 = MeTV channel numbers vary depending on local market



## Additional Packages

### Multi-Sport Pack

beIN SPORTS	392/871
beIN SPORTS en Español	873
Big Ten Network	405/410
FOX Sports 2	149
Longhorn Network	407
MLB Network	152
MLB Strike Zone	153
NBA TV	156
NFL Network	154
NFL RedZone	155
NHL Network	157
Outside TV	390
Pac-12 Network	406/409
SEC Network	404/408

#### Plus additional Regional Sports Networks

Requires subscription to AT120 PLUS or higher.

### Regional Sports Networks\*

Hopper, Wally, Joey	412
All other receivers	409-437

### DISH Music Channels

All receivers	923-946
---------------	---------



HBO (E)	310
HBO (W)	311
HBO 2	312
HBO Latino	313
HBO Signature	314
HBO Family	315



Cinemax	307
5 Star Max	308
More Max	309



Showtime (E)	318
Showtime (W)	319
Showtime 2	320
SHOXBET	321
Showtime Extreme	322
Showtime Showcase	323
The Movie Channel (E)	327
The Movie Channel Xtra (E)	328
FLIX	333



Starz Encore (E)	340
Starz (E)	350
Starz (W)	351
Starz Edge	352
Starz Cinema	353
Starz Comedy	354
Starz In Black	355
Starz Kids & Family	356



EPIX Drive-In	292
EPIX 1	380
EPIX 2	381
EPIX Hits	382

### STARZENCORE

Starz Encore (W)	341
Starz Encore Westerns	342
Starz Encore Action	343
Starz Encore Suspense	344
Starz Encore Black	345
Starz Encore Classic	346
Starz Encore Family	347
MoviePlex	377

### News Pack

BBC World News	281
TheBlaze	212
Bloomberg Television	203
CNBC	208
FOX Business	206
FOX News Channel	205
MSNBC	209
Weather Channel	214

### Stars and Stripes Pack

American Heroes Channel	195
The Cowboy Channel	232
Crime & Investigation	249
Destination America	194
getTV	373
REELZChannel	299
Smithsonian Channel	367
Starz Encore Westerns	342

### Outdoor Pack

Outdoor Channel	396
Outside TV	390
Sportsman Channel	395
World Fishing Network	394

### DISH Movie Pack

Crime & Investigation	249
EPIX 1	380
EPIX 2	381
EPIX Hits	382
FXM	384
Hallmark Movies & Mysteries	187
HDNet Movies	130
IndiePlex	378
MGM	385
MoviePlex	377
PixL	388
RetroPlex	379
Sony Movie Channel	386
Starz Encore Suspense	344
Starz Kids & Family	356

### Kids Pack

Animal Planet	184
Baby TV	824
Boomerang	175
Disney Channel (E)	172
Disney Channel (W)	173
Disney Junior	168
Disney XD	174
Nick Jr.	169
Nicktoons	178

### National Action Pack

AXS TV	167
Crime & Investigation	249
ESPN	140
ESPN2	143
FOX Sports 1	150
Fuse	164
MotorTrend Network	246
TV Games Network	399
TVG2	398

### Regional Action Pack

Big Ten Network	405/410
FOX Sports 2	149
Longhorn Network	407
Outside TV	390
Pac-12 Network	406/409
Regional Sports	412
SEC Network	404/408
World Fishing Network	394

### Heartland Pack

Baby TV	824
The Cowboy Channel	232
Discovery Family	179
GAC Living	248
Game Show Network	116
Hallmark Channel	185
Hallmark Drama	186
Hallmark Movies & Mysteries	187
OWN	189
PixL	388
RFD-TV	231
Uplifting Entertainment	188

### Variety Pack

BET	124
Bravo	129
Crime & Investigation	249
Freeform	180
Investigation Discovery	192
LMN	109

### Latino Bonus Pack

beIN SPORTS en Español	873
Caracol TV	842
CBeebies	848
CNN en Español	859
Disney XD	174
ESPN Deportes	854
Estrella TV	852
FOROtv	847
FOX Deportes	855
Galavision	833
Telemundo	835
TL Novelas	837
UniMas	830
Univision (E)	827
Univision (W)	828
Univision Deportes	856
Plus More	

### International Packages

Arabic	Hindi
Bangla	Israeli
Bengali	Japanese
Brazilian	Kannada
Cantonese	Malayalam
Chinese	Marathi
Filipino	Polish
French	Portuguese
General International & Cricket	Punjabi
German	Taiwanese
Greek	Tamil
	Telugu
	Urdu

# ALPHABETICAL CHANNEL DIRECTORY

A&E	118
Adult Guard Lock Support Channel	480
Adult Programming	488-499
Adult Showcase	490/499
AMC	131
American Heroes Channel AHC	195
Angel One ANGEL	262
Animal Planet APL	184
AT&T SportsNet Pittsburgh	428
AT&T SportsNet Rocky Mountain	414
AXS TV	167
BabyFirstTV	823
BabyTV	824
BBC America BBCA	135
Beauty iQ	73
beIN SPORTS	392/871
beIN SPORTS en Español	873
Believers' Voice of Victory Network	265
BET	124
BET Her	251
Big Ten Network	410/405
TheBlaze	212
Bloomberg Television	203
Boomerang	175
BOUNCE	359
Bravo	129
BUZZR	245
BYUTV	9403
Cartoon Network (E)	176
Cartoon Network (W)	177
CBS Sports Network	158
CGTN Español	884
CGTNN	279
Christian Television Network	267
Cinemax MAX	307
CMT	166
CNBC	208
CNN	200
Comedy Central COM	107
Comet	289
Cooking Channel COOK	113
The Cowboy Channel	232
Cozi	253
Crime & Investigation CIHD	249
C-SPAN	210
C-SPAN2	211
Daystar	263
Destination America	194

Discovery Channel DISC	182
Discovery Family DFC	179
DISH Shopping	123/220/221
DISH Studio	102
Disney Channel (E) DISN-E	172
Disney Channel (W)	173
Disney Junior	168
Disney XD	174
DOGTV	285
E! Entertainment Television	114
Enlace	9411
EPIX	380
EPIX2	381
EPIX Drive-In	292
EPIX Hits EPIXH	382
ESPN	140
ESPN2	143
ESPNEWS	142
ESPNU	141
EVINE Live	134
EWTN	261
Family Entertainment TV FETV	82
5 Star Max SMAX	308
FLIX FLIX-E	333
Food Network FOOD	110
FOROTv	847
FOX Business	206
FOX News Channel FNC	205
FOX Sports 1 FS1	150
FOX Sports 2	149
Free Speech TV (FSTV)	9415
Freeform FREFM	180
Fuse	164
Fusion	244
FX	136
FXM	384
FXX	125
FYI	119
GAC Family	165
GAC Living	248
Galavision	273
Game Show Network GMSHW	116
Gem Shopping Network	229
getTV	373
Golf Channel GOLF	401
GRIT	217
Hallmark Channel HALL	185
Hallmark Drama HALLDR	186
Hallmark Movies & Mysteries HALLMV	187
HBO (E) HBO-E	310

HBO (W)	311
HBO 2 HBO2	312
HBO Family HBOF	315
HBO Latino	313
HBO Signature HBOS	314
HDNet Movies HDMOV	130
Heroes & Icons	293
HGTV	112
Hillsong Channel	258
History HIST	120
HLN	202
Hopper Insider	103
HSN	74
HSN2	226
IFC	133
In Country Television	230
IndiePlex	378
INSP	259
Investigation Discovery ID	192
ION	250
Jewelry Television	83/227
KTLA	233
KTV	264
KWGN	235
Laff TV LAFF	237
Lifetime LIFE	108
Link TV	9410
LMN	109
Logo	254
Longhorn Network	407
Magnolia Network MAGN	111
MeTV <sup>2</sup>	247
MGM MGMHD	385
MLB Network	152
MLB Network Strike Zone	153
More Max MMAX	309
MotorTrend Network MOTOR	246
The Movie Channel (E) TMC	327
The Movie Channel (W) TMC-W	329
The Movie Channel Xtra (E)	328
MoviePlex	377
MSNBC	209
MTV	160
MTV Classic	163
MTV2	161
Nat Geo WILD NGWLD	190
National Geographic NATGEO	197
NBA TV	156

NBC Universo	838
NBC Sports Bay Area	419
NBC Sports Chicago	429
NBC Sports Mid-Atlantic	424
New England Sports Network	434
NewsNation	239
NFL Network	154
NFL RedZone	155
NHL Center Ice	475
NHL Network	157
Nick/Nick at Nite (E)	170
Nick/Nick at Nite (W)	171
Nick Jr.	169
Nicktoons	178
Olympic Channel	389
On Demand Guide	500
Outdoor Channel OUTD	396
OWN: Oprah Winfrey Network	189
Oxygen OXYG	127
Pac-12 Network	409/406
Paramount Network PARMT	241
Pop	117
QVC	137
RECTV	284
REELZChannel	299
RetroPlex	379
RFD-TV	231
Root Sports Northwest	426
Sale	225
Science SCI	193
SEC Network	408/404
Shepherd's Chapel Network	256
Shorts	375
Showtime (E) SHO-E	318
Showtime (W)	319
Showtime 2 (E) SHO2	320
SHOBET	321
Showtime Extreme SHOX	322
Showtime Showcase (E) SHOS	323
Smithsonian Channel SMITH	367
Sony Movie Channel	386
Sportsman Channel	395
Starz (E) STARZ-E	350
Starz (W)	351
Starz Cinema (E) STRZCI	353
Starz Comedy STRZCO	354
Starz Edge STRZED	352
Starz In Black	355



Starz Kids & Family	356
Starz Encore (E) ENCR-E	340
Starz Encore (W) ENCR-W	341
Starz Encore Action EACTN	343
Starz Encore Black EBLACK	345
Starz Encore Classic ECLASS	346
Starz Encore Family EFAMILY	347
Starz Encore Suspense ESUSP	344
Starz Encore Westerns EWESTN	342
SundanceTV SUND-E	126
Syfy	122
TBN	260
TBS	139
TCM	132
TeenNick	181
Tennis Channel	400
3 Angels Broadcasting Network	9393
TLC	183
TNT	138
Travel Channel TRVL	196
truTV TRU	242
TV Land TVLND	106
TVG2	398
UniMas	271
Univision (E)	270
Univision (W)	828
Univision Deportes	397
Uplifting Entertainment UP	188
USA	105
V-ME	846
VH1	162
VICE	121
WE tv WE	128
The Weather Channel	214
World Fishing Network	394
WPIX	234
WSBK	236
WWOR	8105
Z Living	191



# NUMERICAL CHANNEL DIRECTORY

73	Beauty iQ	156	NBA TV	210	C-SPAN	289	Comet	384	FXM
74	HSN	157	NHL Network	211	C-SPAN2	292	EPIX Drive-In	385	MGM MGMHD
82	Family Entertainment TV FETV	158	CBS Sports Network	212	TheBlaze	293	Heroes & Icons	386	Sony Movie Channel
83	Jewelry Television	160	MTV	214	The Weather Channel	299	REELZChannel	389	Olympic Channel
102	DISH Studio	161	MTV2	217	GRIT	307	Cinemax MAX	392	beIN SPORTS
103	Hopper Insider	162	VH1	220	DISH Shopping	308	5 Star Max 5MAX	394	World Fishing Network
105	USA	163	MTV Classic	221	DISH Shopping	309	More Max MMAX	395	Sportsman Channel
106	TV Land TVLND	164	Fuse	225	Sale	310	HBO (E) HBO-E	396	Outdoor Channel OUTD
107	Comedy Central COM	165	GAC Family	226	HSN2	311	HBO (W)	397	Univision Deportes
108	Lifetime LIFE	166	CMT	227	Jewelry Television	312	HBO 2 HBO2	398	TVG2
109	LMN	167	AXS TV	229	Gem Shopping Network	313	HBO Latino	400	Tennis Channel
110	Food Network FOOD	168	Disney Junior	230	In Country Television	314	HBO Signature HBOS	401	Golf Channel GOLF
111	Magnolia Network MAGN	169	Nick Jr.	231	RFD-TV	315	HBO Family HBOF	404	SEC Network
112	HGTV	170	Nick/Nick at Nite (E)	232	The Cowboy Channel	318	Showtime (E) SHO-E	405	Big Ten Network
113	Cooking Channel COOK	171	Nick/Nick at Nite (W)	233	KTLA	319	Showtime (W)	406	PAC-12 Network
114	E! Entertainment Television	172	Disney Channel (E) DISN-E	234	WPIX	320	Showtime 2 (E) SHO2	407	Longhorn Network
116	Game Show Network GMSHW	173	Disney Channel (W)	235	KWGN	321	SHOxBET SHO-BET	408	SEC Network
117	Pop	174	Disney XD	236	WSBK	322	Showtime Extreme SHO-X	409	Pac-12 Network
118	A&E	175	Boomerang	237	Laff TV LAFF	323	Showtime Showcase (E) SHOS	410	Big Ten Network
119	FYI	176	Cartoon Network (E)	239	NewsNation	327	The Movie Channel (E) TMC	414	AT&T SportsNet Rocky Mountain
120	History HIST	177	Cartoon Network (W)	241	Paramount Network PARMT	328	The Movie Channel Xtra (E)	419	NBC Sports Bay Area
121	VICE	178	Nicktoons	242	truTV TRU	329	The Movie Channel (W)	424	NBC Sports Mid-Atlantic
122	Syfy	179	Discovery Family DFC	244	Fusion	333	FLIX FLIX-E	426	Root Sports Northwest
123	DISH Shopping	180	Freeform FREFM	245	BUZZR	340	Starz Encore (E) ENCR-E	428	AT&T SportsNet Pittsburgh
124	BET	181	TeenNick	246	MotorTrend Network MOTOR	341	Starz Encore (W) ENCR-W	429	NBC Sports Chicago
125	FXX	182	Discovery Channel DISC	247	MeTV <sup>2</sup>	342	Starz Encore Westerns EWESTN	434	New England Sports Network
126	SundanceTV SUND-E	183	TLC	248	GAC Living	343	Starz Encore Action EACTN	475	NHL Center Ice
127	Oxygen OXYG	184	Animal Planet APL	249	Crime & Investigation CIHD	344	Starz Encore Suspense ESUSP	480	Adult Guard Lock Support Channel
128	WE tv WE	185	Hallmark Channel HALL	250	ION	345	Starz Encore Black EBLACK	488-499	Adult Programming
129	Bravo	186	Hallmark Drama HALDR	251	BET Her	346	Starz Encore Classic ECLASS	490/499	Adult Showcase
130	HDNet Movies HDMOV	187	Hallmark Movies & Mysteries HALLMV	253	Cozi	347	Starz Encore Family EFAMILY	500	On Demand Guide
131	AMC	188	Uplifting Entertainment UP	254	Logo	350	Starz (E) STARZ-E	823	BabyFirstTV
132	TCM	189	OWN: Oprah Winfrey Network	256	Shepherd's Chapel Network	351	Starz (W)	824	BabyTV
133	IFC	190	Nat Geo WILD NGWLD	258	Hillsong Channel	352	Starz Edge STRZED	828	Univision (W)
134	EVINE Live	191	Z Living	259	INSP	353	Starz Cinema (E) STRZCI	838	NBC Universo
135	BBC America BBCA	192	Investigation Discovery ID	260	TBN	354	Starz Comedy STRZCO	846	V-ME
136	FX	193	Science SCI	261	EWTN	355	Starz In Black	847	FOROtv
137	QVC	194	Destination America	262	Angel One ANGEL	356	Starz Kids & Family	873	beIN SPORTS en Español
138	TNT	195	American Heroes Channel AHC	263	Daystar	359	BOUNCE	884	CGTNN Español
139	TBS	196	Travel Channel TRVL	264	KTV	367	Smithsonian Channel SMITH	8105	WWOR
140	ESPN	197	National Geographic NATGEO	265	Believers' Voice of Victory Network	373	getTV	9393	3 Angels Broadcasting Network
141	ESPNU	200	CNN	267	Christian Television Network	375	Shorts	9403	BYUTV
142	ESPNEWS	202	HLN	270	Univision (E)	377	MoviePlex	9410	Link TV
143	ESPN2	203	Bloomberg Television	271	UniMas	378	IndiePlex	9411	Enlace
149	FOX Sports 2	205	FOX News Channel FNC	273	Galavision	379	RetroPlex	9415	Free Speech TV (FSTV)
150	FOX Sports 1 FS1	206	FOX Business	279	CGTNN	380	EPIX		
152	MLB Network	208	CNBC	284	RECTV	381	EPIX2		
153	MLB Network Strike Zone	209	MSNBC	285	DOGTV	382	EPIX Hits EPIXH		

OD

Networks may not be available in all areas. See pages 220-223 for channel and package information.  
Programming subject to change. ? = MeTV channel numbers vary depending on local market.

## SUDOKU CHALLENGE

By Linda Thistle

Difficulty This Month: ★★ ★

### DIRECTIONS

Place a number in the empty boxes in such a way that each row across, each column down and each small 9-box square contains all of the numbers from one to nine.

★ Moderate  
★★ Challenging  
★★★ HOO BOY!

7					9	8		
	3	9	1				5	
		8		4				2
		2			5	9		
5			6					4
	8			2		1	7	
		1			8		2	
3				7	9			8
	7		4			6		

© 2022 King Features Synd., Inc.

## WORD FIND

By Candice Sullivan

### IN THIS ISSUE

(words to find in Bold)

**Abbott** Elementary  
American **Auto**  
The **Cleaning** Lady  
Ray **Donovan**: The  
Movie  
Leave It to **Geege**  
**Good Sam**  
**Janet**  
**Joe** Millionaire  
**Monarch**  
**Pivoting**  
**Promised** Land  
**Single** Drunk Female  
**Women** of the  
Movement  
Around the **World** in  
80 Days

P	R	O	M	I	S	E	D	A	I	N
C	I	X	A	P	J	A	Q	V	E	U
L	U	V	J	Y	F	U	X	M	T	H
E	R	I	O	H	H	M	O	E	C	L
A	J	A	B	T	A	W	N	R	E	P
N	B	M	B	S	I	A	A	G	F	S
I	C	A	D	B	J	N	E	W	C	I
N	K	O	A	J	O	E	G	O	P	N
G	O	I	U	M	G	T	N	R	J	G
G	O	S	T	T	V	W	T	L	N	L
D	O	N	O	V	A	N	G	D	M	E

## ACROSS & DOWN

By Donna Pettman

### DIRECTIONS

Rearrange the letters in each group to form a word. Place the words into the diagram so that the same words read both across and down. (The first word across is the same as the first word down and so on.) The letter groups are not necessarily placed next to the row of the diagram in which they go.

DAYR  
RAAE  
RNEA  
NMYA


© 2022 King Features Synd., Inc.

## TV CROSSWORD

By Myles Mellor

1		2		3	4	5		6		7		8	9
				10								11	
12								13			14		
										15			
16						17				18			
19					20			21		22			23
				24				25					
26			27			28	29			30			
			31			32							
33	34									35		36	
37													
38								39	40		41		42
												43	44
						45		46				47	
48												49	

### ACROSS

- Period drama set in New York created by Julian Fellowes of *Downton Abbey* fame (3 words)
- Blues singer King
- Realize
- FOX drama starring Terrence Howard
- Bill Belichick and Nick Saban, for example
- She plays Shay on *NCIS: Los Angeles*, \_\_\_ Long
- Global warming concern
- Network showing the new series *Around the World in 80 Days*
- Tennessee player
- Sweeping story
- "We Don't Need Another \_\_\_" (Tina Turner)
- ABC historical series about the origins of the civil rights movement: \_\_\_ of the Movement
- Oom-\_\_\_ (tuba sound)
- Dawn time (abbr.)
- FOX sitcom starring Mayim Bialik, \_\_\_ Kat (2 words)
- Type of pear
- Large feature of Dumbo's
- CBS reality game show returning in January, *The* \_\_\_ (2 words)
- Fannie \_\_\_, mortgage giant
- Carried out
- Finale
- NBC drama series with a season premiere in January starring Milo Ventimiglia (3 words)
- Request to Vanna White (2 words)
- Words with "moment's notice" (2 words)

- ABC dating and relationships show (2 words)
- Little Women* woman

### DOWN

- New Year's celebration on NBC (3 words)
- Teen drama series on HBO starring Zendaya in the lead role
- Natalie Portman's country of birth
- Crouching Tiger, Hidden Dragon* director Ang \_\_\_
- Of in Paris
- Ties up in port
- Actor who is the subject of a TCM Birthday Tribute this month, Cary \_\_\_
- Animal seen on *Yellowstone*
- New NBC game show hosted by Jimmy Fallon (3 words)
- 102, in old Rome
- Clown's prop
- Verdi composition
- Moby Dick, for one
- "It's \_\_\_!" ("I give up!") (2 words)
- Large estate in Spanish-speaking countries
- Part of a relay race
- Impair
- Golfer's assistant
- Part of an hour (abbr.)
- Maria's intended in *West Side Story*
- 2001 computer
- Elton John, for one
- Friend of Frodo
- Beehive State Native American
- Decline
- Acidity factor





ROMAN REIGNS



PRESENTED BY  
 

**SATURDAY 01.01.22**  
 LIVE ON PAY-PER-VIEW

**LIVE! Saturday, Jan. 1 at 8PM ET**

Standard Definition: \$44.99 • High Definition: \$44.99

Available in  


TM & © 2021 WWE. All Rights Reserved.



**WWE ROYAL RUMBLE**

**LIVE!  
 ON PAY-PER-VIEW**

**Saturday, Jan. 29  
 at 8PM ET**

Standard Definition: \$44.99  
 Channel 462

High Definition: \$44.99  
 Channel 460

Available in  


TM & © 2021 WWE. All Rights Reserved.

Event dates, cards, times, and prices subject to change. HD programming requires HD receiver and HD television (sold separately).

Order now: Call 1-877-DISH PPV (347-4778) or online at [mydish.com/wwe](http://mydish.com/wwe)

## Need Your Magazine Earlier?

# SIGN UP FOR OUR DIGITAL ISSUE!

As a subscriber to *OnDISH Magazine*, you can  
get a **FREE EXPANDED DIGITAL ISSUE!**



- **Easy-to-read 24-hour TV listings**  
(zoom in as close as you want)
- **Delivery (via email)** up to a  
week before the end of the month!
- **More** movies, sports and specials content

## HOW TO GET YOUR DIGITAL ISSUE:

1. Go to [ondishmag.com/all-access/](http://ondishmag.com/all-access/)
2. Enter your name, address and email (to verify you are an existing subscriber)
3. Enjoy! Every month, we'll email you a special link to download your free expanded digital edition of *OnDISH Magazine*.